

Daily Direct Steer and Heifer Slaughter Cattle Summary

For Trade on:

Wednesday, May 05, 2021

LM CT100	5-AREA	LM CT109
Neg. Cash Volume:	7,833	Dressed Formula Vol: 37,509
Live Steer Avg:	\$118.68	Steer/Heifer Avg: \$193.25
Live Heifer Avg:	\$118.61	Dressed Neg. Grid Vol: 449
Dressed Steer Avg:	\$187.58	Steer/Heifer Avg: \$198.14
Dressed Heifer Avg:	\$188.99	TOTAL VOLUME: 45,791
LM CT106	TOTAL WK TO DATE VOLUME:	195,748
Committed:	46,112	Delivered: 67,108

LM CT118	TX-OK-NM	LM CT109
Neg. Cash Volume:	2,128	Dressed Formula Vol: 9,885
Live Steer Avg:	\$118.83	Steer/Heifer Avg: \$192.13
Live Heifer Avg:	\$118.47	Dressed Neg. Grid Vol: 0
Dressed Steer Avg:	\$0.00	Steer/Heifer Avg: \$0.00
Dressed Heifer Avg:	\$0.00	TOTAL VOLUME: 12,013
LM CT106	TOTAL WK TO DATE VOLUME:	44,062
Committed:	10,201	Delivered: 21,522

LM CT121	KANSAS	LM CT109
Neg. Cash Volume:	2,326	Dressed Formula Vol: 13,685
Live Steer Avg:	\$119.00	Steer/Heifer Avg: \$190.60
Live Heifer Avg:	\$119.00	Dressed Neg. Grid Vol: 90
Dressed Steer Avg:	\$0.00	Steer/Heifer Avg: \$203.98
Dressed Heifer Avg:	\$0.00	TOTAL VOLUME: 16,101
LM CT106	TOTAL WK TO DATE VOLUME:	54,866
Committed:	16,684	Delivered: 14,125

LM CT124	NEBRASKA	LM CT109
Neg. Cash Volume:	1,469	Dressed Formula Vol: 11,547
Live Steer Avg:	\$117.75	Steer/Heifer Avg: \$197.34
Live Heifer Avg:	\$0.00	Dressed Neg. Grid Vol: 109
Dressed Steer Avg:	\$187.57	Steer/Heifer Avg: \$201.78
Dressed Heifer Avg:	\$188.89	TOTAL VOLUME: 13,125
LM CT106	TOTAL WK TO DATE VOLUME:	60,601
Committed:	9,751	Delivered: 13,389

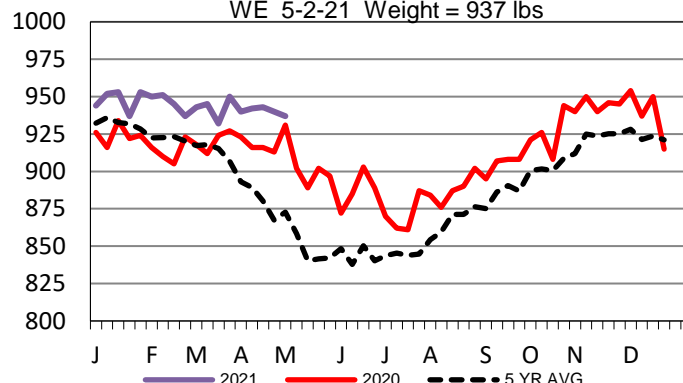
LM CT134	COLORADO	LM CT109
Neg. Cash Volume:	0	Dressed Formula Vol: 419
Live Steer Avg:	\$0.00	Steer/Heifer Avg: \$192.94
Live Heifer Avg:	\$0.00	Dressed Neg. Grid Vol: 0
Dressed Steer Avg:	\$0.00	Steer/Heifer Avg: \$0.00
Dressed Heifer Avg:	\$0.00	TOTAL VOLUME: 419
LM CT106	TOTAL WK TO DATE VOLUME:	5,810
Committed:	4,109	Delivered: 6,163

LM CT137	IA-MN	LM CT109
Neg. Cash Volume:	1,910	Dressed Formula Vol: 2,150
Live Steer Avg:	\$117.83	Steer/Heifer Avg: \$193.30
Live Heifer Avg:	\$117.34	Dressed Neg. Grid Vol: 355
Dressed Steer Avg:	\$187.59	Steer/Heifer Avg: \$195.39
Dressed Heifer Avg:	\$0.00	TOTAL VOLUME: 4,415
LM CT106	TOTAL WK TO DATE VOLUME:	31,113
Committed:	5,367	Delivered: 11,909

Wednesday cash trading was slow on light demand in the Southern Plains. So far for the week live has traded steady to 0.50 lower from 117.50-119.00 in Texas, and steady to 1.00 higher at 119.00 in Kansas. Cash trading was limited on light demand in Nebraska and the Western Cornbelt. Cash trading was at a standstill in Colorado. Tuesday in Nebraska live traded at 118.00 and dressed traded from 188.00-190.00. In Colorado last week, live traded from 119.00-120.00. In the Western Cornbelt on Tuesday live traded from 118.00-119.00 and dressed traded from 187.00-190.00.

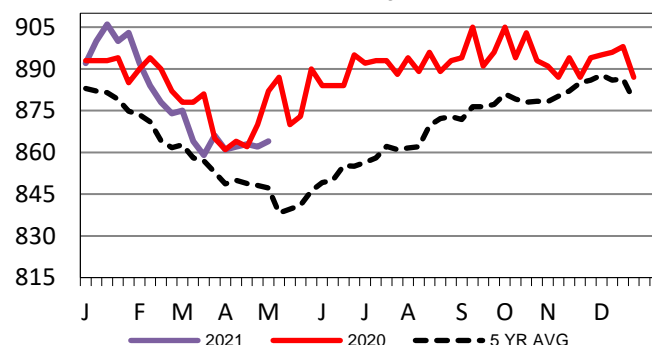
Iowa-Minnesota Formula Carcass Weights

WE 5-2-21 Weight = 937 lbs



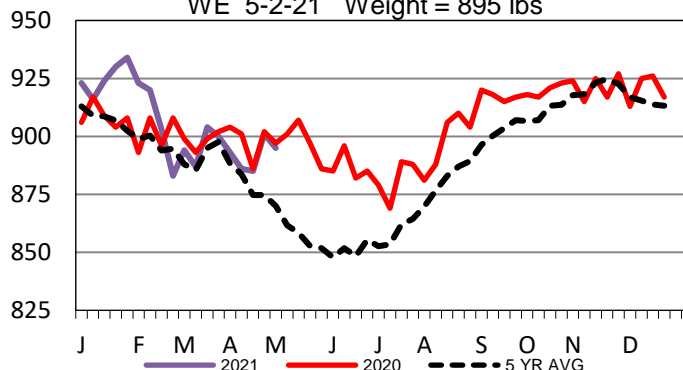
Kansas Formula Carcass Weights

WE 5-2-21 Weight = 864 lbs



Nebraska Formula Carcass Weights

WE 5-2-21 Weight = 895 lbs



USDA Livestock, Poultry and Grain Market News

St. Joseph, Missouri

Phone: 816-676-7000

stjoe.lpgmn@ams.usda.gov