

Daily Direct Steer and Heifer Slaughter Cattle Summary

For Trade on:

Wednesday, April 28, 2021

LM CT100	5-AREA	LM CT109
Neg. Cash Volume:	39,863	Dressed Formula Vol: 24,619
Live Steer Avg:	\$118.91	Steer/Heifer Avg: \$194.27
Live Heifer Avg:	\$119.30	Dressed Neg. Grid Vol: 3,042
Dressed Steer Avg:	\$190.36	Steer/Heifer Avg: \$197.64
Dressed Heifer Avg:	\$190.70	TOTAL VOLUME: 67,524
LM CT106	TOTAL WK TO DATE VOLUME:	175,773
Committed:	99,020	Delivered: 70,450

LM CT118	TX-OK-NM	LM CT109
Neg. Cash Volume:	7,567	Dressed Formula Vol: 4,543
Live Steer Avg:	\$118.65	Steer/Heifer Avg: \$190.66
Live Heifer Avg:	\$118.67	Dressed Neg. Grid Vol: 0
Dressed Steer Avg:	\$0.00	Steer/Heifer Avg: \$0.00
Dressed Heifer Avg:	\$0.00	TOTAL VOLUME: 12,110
LM CT106	TOTAL WK TO DATE VOLUME:	50,257
Committed:	39,548	Delivered: 22,301

LM CT121	KANSAS	LM CT109
Neg. Cash Volume:	3,016	Dressed Formula Vol: 9,020
Live Steer Avg:	\$118.06	Steer/Heifer Avg: \$190.89
Live Heifer Avg:	\$0.00	Dressed Neg. Grid Vol: 376
Dressed Steer Avg:	\$191.00	Steer/Heifer Avg: \$194.78
Dressed Heifer Avg:	\$0.00	TOTAL VOLUME: 12,412
LM CT106	TOTAL WK TO DATE VOLUME:	53,393
Committed:	13,940	Delivered: 18,282

LM CT124	NEBRASKA	LM CT109
Neg. Cash Volume:	19,408	Dressed Formula Vol: 8,531
Live Steer Avg:	\$119.53	Steer/Heifer Avg: \$199.87
Live Heifer Avg:	\$119.94	Dressed Neg. Grid Vol: 1,305
Dressed Steer Avg:	\$190.29	Steer/Heifer Avg: \$199.12
Dressed Heifer Avg:	\$190.92	TOTAL VOLUME: 29,244
LM CT106	TOTAL WK TO DATE VOLUME:	44,546
Committed:	27,125	Delivered: 13,673

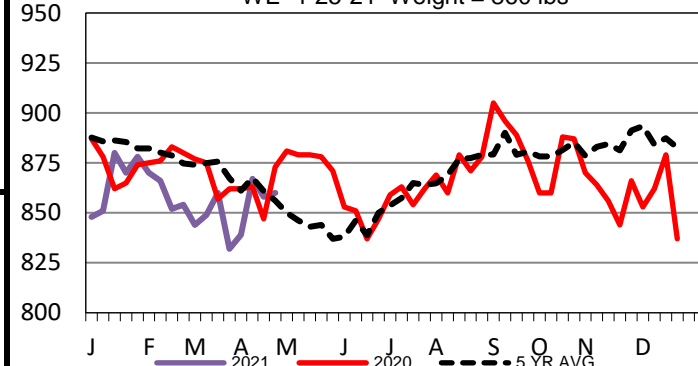
LM CT134	COLORADO	LM CT109
Neg. Cash Volume:	1,073	Dressed Formula Vol: 416
Live Steer Avg:	\$120.00	Steer/Heifer Avg: \$195.20
Live Heifer Avg:	\$120.00	Dressed Neg. Grid Vol: 674
Dressed Steer Avg:	\$0.00	Steer/Heifer Avg: \$196.58
Dressed Heifer Avg:	\$0.00	TOTAL VOLUME: 2,163
LM CT106	TOTAL WK TO DATE VOLUME:	12,000
Committed:	5,943	Delivered: 7,200

LM CT137	IA-MN	LM CT109
Neg. Cash Volume:	8,799	Dressed Formula Vol: 2,109
Live Steer Avg:	\$119.26	Steer/Heifer Avg: \$193.69
Live Heifer Avg:	\$119.00	Dressed Neg. Grid Vol: 687
Dressed Steer Avg:	\$190.49	Steer/Heifer Avg: \$197.42
Dressed Heifer Avg:	\$190.14	TOTAL VOLUME: 11,595
LM CT106	TOTAL WK TO DATE VOLUME:	15,760
Committed:	12,464	Delivered: 8,994

Wednesday cash trading and demand were moderate in Texas with live steady to 1.00 lower from 118.00-119.00. In Kansas, cash trading was slow on light demand with live 1.00 lower at 118.00. In Nebraska, cash trading and demand were moderate with live 2.00- 3.00 lower from 119.00-120.00, dressed 1.00 to 2.00 lower from 190.00-191.00. In IA/MN cash trading was slow on moderate demand with live 1.00-4.00 lower at 119.00, dressed 1.00-2.00 lower from 190.00-191.00. Cash trading in Colorado was limited on light demand. On Monday live traded at 119.00.

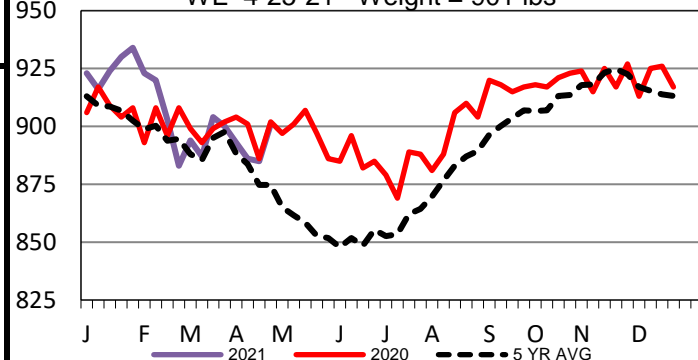
Colorado Formula Carcass Weights

WE 4-25-21 Weight = 860 lbs



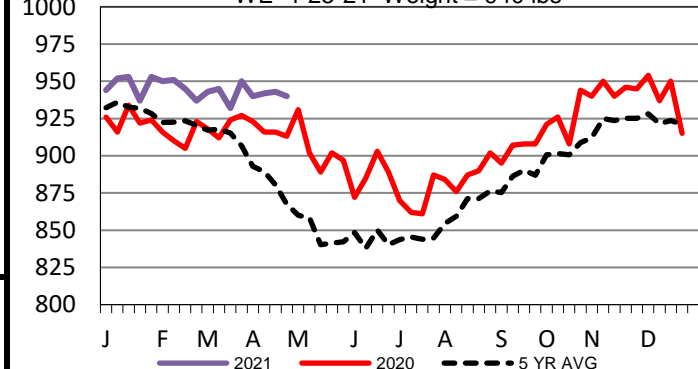
Nebraska Formula Carcass Weights

WE 4-25-21 Weight = 901 lbs



Iowa-Minnesota Formula Carcass Weights

WE 4-25-21 Weight = 940 lbs



USDA Livestock, Poultry and Grain Market News

St. Joseph, Missouri

Phone: 816-676-7000

stjoe.lpgmn@ams.usda.gov