

Daily Direct Steer and Heifer Slaughter Cattle Summary

For Trade on:

Tuesday, April 27, 2021

LM CT100	5-AREA	LM CT109
Neg. Cash Volume:	6,825	Dressed Formula Vol: 39,100
Live Steer Avg:	\$118.97	Steer/Heifer Avg: \$197.94
Live Heifer Avg:	\$119.24	Dressed Neg. Grid Vol: 2,054
Dressed Steer Avg:	\$189.75	Steer/Heifer Avg: \$193.49
Dressed Heifer Avg:	\$188.00	TOTAL VOLUME: 47,979
LM CT106	TOTAL WK TO DATE VOLUME:	108,249
Committed:	70,233	Delivered: 68,218

LM CT118	TX-OK-NM	LM CT109
Neg. Cash Volume:	1,488	Dressed Formula Vol: 17,179
Live Steer Avg:	\$119.00	Steer/Heifer Avg: \$193.76
Live Heifer Avg:	\$119.00	Dressed Neg. Grid Vol: 160
Dressed Steer Avg:	\$0.00	Steer/Heifer Avg: \$189.88
Dressed Heifer Avg:	\$0.00	TOTAL VOLUME: 18,827
LM CT106	TOTAL WK TO DATE VOLUME:	38,147
Committed:	19,626	Delivered: 20,252

LM CT121	KANSAS	LM CT109
Neg. Cash Volume:	3,326	Dressed Formula Vol: 10,345
Live Steer Avg:	\$118.84	Steer/Heifer Avg: \$193.87
Live Heifer Avg:	\$119.00	Dressed Neg. Grid Vol: 41
Dressed Steer Avg:	\$189.00	Steer/Heifer Avg: \$198.37
Dressed Heifer Avg:	\$0.00	TOTAL VOLUME: 13,712
LM CT106	TOTAL WK TO DATE VOLUME:	40,981
Committed:	27,000	Delivered: 17,065

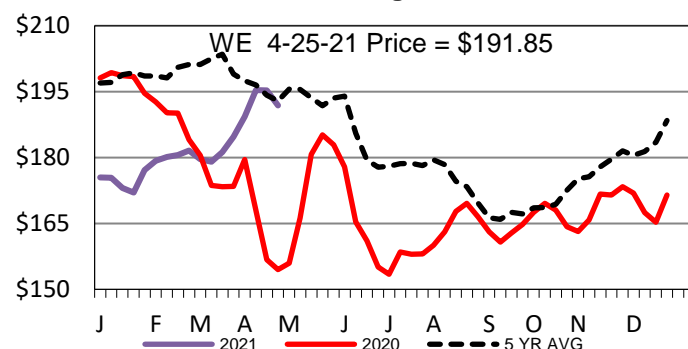
LM CT124	NEBRASKA	LM CT109
Neg. Cash Volume:	813	Dressed Formula Vol: 4,548
Live Steer Avg:	\$119.54	Steer/Heifer Avg: \$212.53
Live Heifer Avg:	\$120.59	Dressed Neg. Grid Vol: 1,042
Dressed Steer Avg:	\$0.00	Steer/Heifer Avg: \$193.43
Dressed Heifer Avg:	\$0.00	TOTAL VOLUME: 6,403
LM CT106	TOTAL WK TO DATE VOLUME:	15,302
Committed:	14,347	Delivered: 14,417

LM CT134	COLORADO	LM CT109
Neg. Cash Volume:	0	Dressed Formula Vol: 6,441
Live Steer Avg:	\$0.00	Steer/Heifer Avg: \$205.48
Live Heifer Avg:	\$0.00	Dressed Neg. Grid Vol: 41
Dressed Steer Avg:	\$0.00	Steer/Heifer Avg: \$198.80
Dressed Heifer Avg:	\$0.00	TOTAL VOLUME: 6,482
LM CT106	TOTAL WK TO DATE VOLUME:	9,837
Committed:	3,059	Delivered: 7,513

LM CT137	IA-MN	LM CT109
Neg. Cash Volume:	1,198	Dressed Formula Vol: 587
Live Steer Avg:	\$118.67	Steer/Heifer Avg: \$196.30
Live Heifer Avg:	\$0.00	Dressed Neg. Grid Vol: 852
Dressed Steer Avg:	\$190.00	Steer/Heifer Avg: \$194.63
Dressed Heifer Avg:	\$188.00	TOTAL VOLUME: 2,637
LM CT106	TOTAL WK TO DATE VOLUME:	4,165
Committed:	6,201	Delivered: 8,971

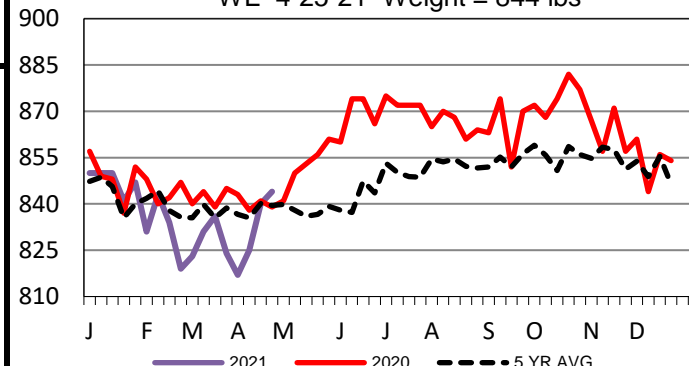
Tuesday cash trading in the Southern Plains was slow on light demand with live 1.00 lower in the Texas Panhandle and unevenly steady in Kansas at 119.00 on a light test compared to last week. Cash trading in Nebraska and the Western Cornbelt was limited on light demand and at a standstill in Colorado. Last week in Nebraska, live traded from 121.00-123.00 and dressed traded at 192.00. On Monday in Colorado live traded at 119.00. In the Western Cornbelt last week, live traded from 120.00-123.00 and dressed traded at 192.00.

Iowa-Minnesota Wkly Dressed Steer Wtd Avg



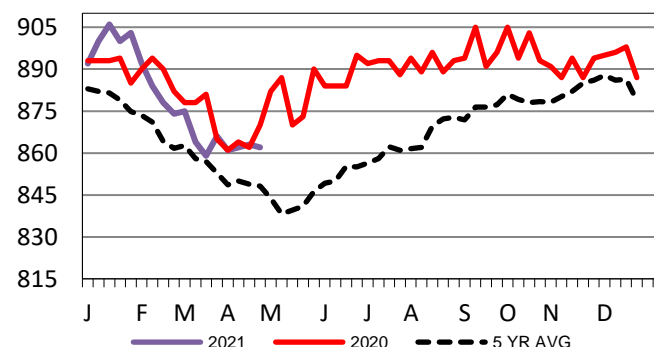
TX-OK-NM Formula Carcass Weights

WE 4-25-21 Weight = 844 lbs



Kansas Formula Carcass Weights

WE 4-25-21 Weight = 862 lbs



USDA Livestock, Poultry and Grain Market News

St. Joseph, Missouri

Phone: 816-676-7000

stjoe.lpgmn@ams.usda.gov