

## Daily Direct Steer and Heifer Slaughter Cattle Summary

For Trade on:

Tuesday, April 20, 2021

<a href="#">LM CT100</a>	<b>5-AREA</b>	<a href="#">LM CT109</a>
<b>Neg. Cash Volume:</b>	3,328	<b>Dressed Formula Vol:</b> 34,546
Live Steer Avg:	\$122.77	Steer/Heifer Avg: \$198.77
Live Heifer Avg:	\$122.33	<b>Dressed Neg. Grid Vol:</b> 396
Dressed Steer Avg:	\$0.00	Steer/Heifer Avg: \$189.73
Dressed Heifer Avg:	\$193.00	<b>TOTAL VOLUME:</b> 38,270
<a href="#">LM CT106</a>	<b>TOTAL WK TO DATE VOLUME:</b>	<b>96,274</b>
<b>Committed:</b>	<b>79,364</b>	<b>Delivered:</b> 72,980

<a href="#">LM CT118</a>	<b>TX-OK-NM</b>	<a href="#">LM CT109</a>
<b>Neg. Cash Volume:</b>	0	<b>Dressed Formula Vol:</b> 7,133
Live Steer Avg:	\$0.00	Steer/Heifer Avg: \$194.40
Live Heifer Avg:	\$0.00	<b>Dressed Neg. Grid Vol:</b> 0
Dressed Steer Avg:	\$0.00	Steer/Heifer Avg: \$0.00
Dressed Heifer Avg:	\$0.00	<b>TOTAL VOLUME:</b> 7,133
<a href="#">LM CT106</a>	<b>TOTAL WK TO DATE VOLUME:</b>	<b>24,040</b>
<b>Committed:</b>	<b>28,537</b>	<b>Delivered:</b> 17,915

<a href="#">LM CT121</a>	<b>KANSAS</b>	<a href="#">LM CT109</a>
<b>Neg. Cash Volume:</b>	0	<b>Dressed Formula Vol:</b> 10,776
Live Steer Avg:	\$0.00	Steer/Heifer Avg: \$193.81
Live Heifer Avg:	\$0.00	<b>Dressed Neg. Grid Vol:</b> 0
Dressed Steer Avg:	\$0.00	Steer/Heifer Avg: \$0.00
Dressed Heifer Avg:	\$0.00	<b>TOTAL VOLUME:</b> 10,776
<a href="#">LM CT106</a>	<b>TOTAL WK TO DATE VOLUME:</b>	<b>40,187</b>
<b>Committed:</b>	<b>21,000</b>	<b>Delivered:</b> 23,000

<a href="#">LM CT124</a>	<b>NEBRASKA</b>	<a href="#">LM CT109</a>
<b>Neg. Cash Volume:</b>	2,257	<b>Dressed Formula Vol:</b> 7,185
Live Steer Avg:	\$122.72	Steer/Heifer Avg: \$208.77
Live Heifer Avg:	\$122.00	<b>Dressed Neg. Grid Vol:</b> 128
Dressed Steer Avg:	\$0.00	Steer/Heifer Avg: \$185.24
Dressed Heifer Avg:	\$0.00	<b>TOTAL VOLUME:</b> 9,570
<a href="#">LM CT106</a>	<b>TOTAL WK TO DATE VOLUME:</b>	<b>16,629</b>
<b>Committed:</b>	<b>12,363</b>	<b>Delivered:</b> 15,414

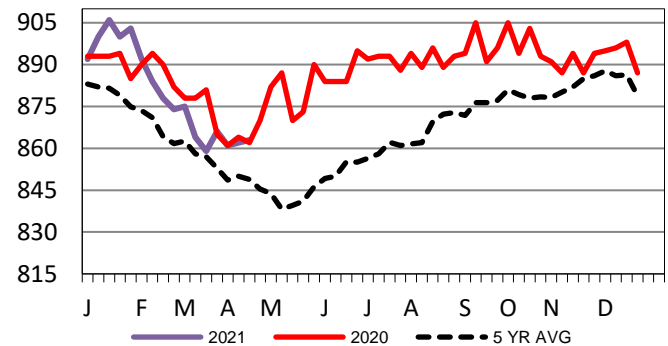
<a href="#">LM CT134</a>	<b>COLORADO</b>	<a href="#">LM CT109</a>
<b>Neg. Cash Volume:</b>	0	<b>Dressed Formula Vol:</b> 6,645
Live Steer Avg:	\$0.00	Steer/Heifer Avg: \$201.52
Live Heifer Avg:	\$0.00	<b>Dressed Neg. Grid Vol:</b> 0
Dressed Steer Avg:	\$0.00	Steer/Heifer Avg: \$0.00
Dressed Heifer Avg:	\$0.00	<b>TOTAL VOLUME:</b> 6,645
<a href="#">LM CT106</a>	<b>TOTAL WK TO DATE VOLUME:</b>	<b>6,954</b>
<b>Committed:</b>	<b>3,995</b>	<b>Delivered:</b> 7,826

<a href="#">LM CT137</a>	<b>IA-MN</b>	<a href="#">LM CT109</a>
<b>Neg. Cash Volume:</b>	1,071	<b>Dressed Formula Vol:</b> 2,807
Live Steer Avg:	\$123.00	Steer/Heifer Avg: \$196.75
Live Heifer Avg:	\$122.61	<b>Dressed Neg. Grid Vol:</b> 338
Dressed Steer Avg:	\$0.00	Steer/Heifer Avg: \$190.11
Dressed Heifer Avg:	\$193.00	<b>TOTAL VOLUME:</b> 4,216
<a href="#">LM CT106</a>	<b>TOTAL WK TO DATE VOLUME:</b>	<b>8,704</b>
<b>Committed:</b>	<b>13,469</b>	<b>Delivered:</b> 8,825

Tuesday in the Southern Plains and Colorado cash trading was at a standstill. In Nebraska and the Western Cornbelt cash trading was limited on light demand. In Nebraska a few early live traded at 123.00. Last week in the Texas Panhandle live traded at 120.00. In Kansas live traded from 120.00-121.00. For the prior week in Nebraska live and dressed traded from 122.00-126.00 and at 196.00. In Colorado live traded from 122.00-123.00. For the previous week in the Western Cornbelt live and dressed purchases traded from 122.00-124.00 and from 194.00-196.00.

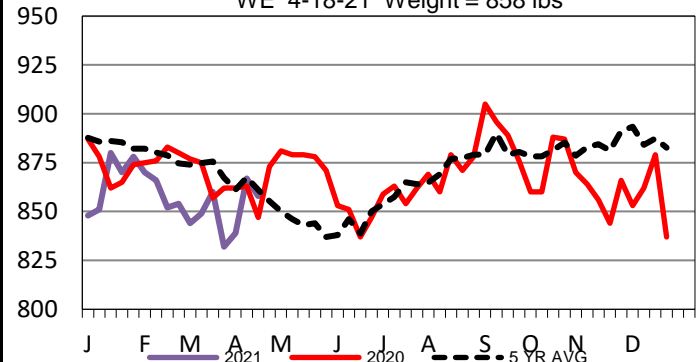
## Kansas Formula Carcass Weights

WE 4-18-21 Weight = 863 lbs



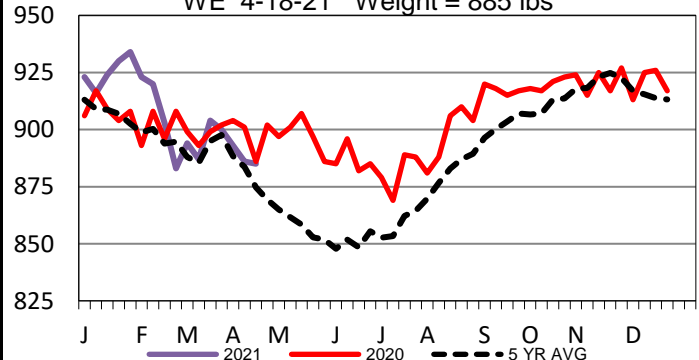
## Colorado Formula Carcass Weights

WE 4-18-21 Weight = 858 lbs



## Nebraska Formula Carcass Weights

WE 4-18-21 Weight = 885 lbs



## USDA Livestock, Poultry and Grain Market News

St. Joseph, Missouri

Phone: 816-676-7000

[stjoe.lpgmn@ams.usda.gov](mailto:stjoe.lpgmn@ams.usda.gov)