

Daily Direct Steer and Heifer Slaughter Cattle Summary

For Trade on:

Friday, April 09, 2021

LM CT100	5-AREA	LM CT109
Neg. Cash Volume:	7,461	Dressed Formula Vol: 53,860
Live Steer Avg:	\$124.12	Steer/Heifer Avg: \$189.19
Live Heifer Avg:	\$124.52	Dressed Neg. Grid Vol: 2,104
Dressed Steer Avg:	\$195.83	Steer/Heifer Avg: \$186.63
Dressed Heifer Avg:	\$196.00	TOTAL VOLUME: 63,425
LM CT106	TOTAL WK TO DATE VOLUME:	295,072
Committed:	78,851	Delivered: 108,023

LM CT118	TX-OK-NM	LM CT109
Neg. Cash Volume:	29	Dressed Formula Vol: 14,796
Live Steer Avg:	\$120.00	Steer/Heifer Avg: \$185.11
Live Heifer Avg:	\$0.00	Dressed Neg. Grid Vol: 0
Dressed Steer Avg:	\$0.00	Steer/Heifer Avg: \$0.00
Dressed Heifer Avg:	\$0.00	TOTAL VOLUME: 14,825
LM CT106	TOTAL WK TO DATE VOLUME:	67,270
Committed:	25,053	Delivered: 26,089

LM CT121	KANSAS	LM CT109
Neg. Cash Volume:	708	Dressed Formula Vol: 22,123
Live Steer Avg:	\$123.00	Steer/Heifer Avg: \$188.27
Live Heifer Avg:	\$0.00	Dressed Neg. Grid Vol: 0
Dressed Steer Avg:	\$0.00	Steer/Heifer Avg: \$0.00
Dressed Heifer Avg:	\$0.00	TOTAL VOLUME: 22,831
LM CT106	TOTAL WK TO DATE VOLUME:	90,710
Committed:	19,413	Delivered: 31,360

LM CT124	NEBRASKA	LM CT109
Neg. Cash Volume:	1,256	Dressed Formula Vol: 5,601
Live Steer Avg:	\$124.00	Steer/Heifer Avg: \$196.08
Live Heifer Avg:	\$124.11	Dressed Neg. Grid Vol: 1,473
Dressed Steer Avg:	\$196.00	Steer/Heifer Avg: \$187.32
Dressed Heifer Avg:	\$0.00	TOTAL VOLUME: 8,330
LM CT106	TOTAL WK TO DATE VOLUME:	66,892
Committed:	10,479	Delivered: 26,406

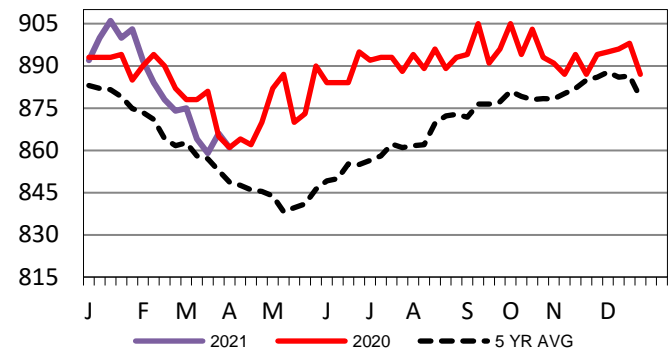
LM CT134	COLORADO	LM CT109
Neg. Cash Volume:	0	Dressed Formula Vol: 8,165
Live Steer Avg:	\$0.00	Steer/Heifer Avg: \$193.56
Live Heifer Avg:	\$0.00	Dressed Neg. Grid Vol: 483
Dressed Steer Avg:	\$0.00	Steer/Heifer Avg: \$183.83
Dressed Heifer Avg:	\$0.00	TOTAL VOLUME: 8,648
LM CT106	TOTAL WK TO DATE VOLUME:	25,894
Committed:	11,256	Delivered: 8,590

LM CT137	IA-MN	LM CT109
Neg. Cash Volume:	5,468	Dressed Formula Vol: 3,364
Live Steer Avg:	\$124.57	Steer/Heifer Avg: \$191.50
Live Heifer Avg:	\$124.87	Dressed Neg. Grid Vol: 227
Dressed Steer Avg:	\$195.81	Steer/Heifer Avg: \$186.80
Dressed Heifer Avg:	\$196.00	TOTAL VOLUME: 9,059
LM CT106	TOTAL WK TO DATE VOLUME:	44,959
Committed:	12,650	Delivered: 15,578

For Friday cash trading was limited on light demand in the Southern Plains, Nebraska, and the Western Cornbelt with a few live and dressed in the Western Cornbelt at 125.00 and 196.00 respectively. Cash trading in Colorado was at a standstill. The last market in the Southern Plains was on Wednesday with live at 120.00. In Nebraska on Wednesday live and dressed traded at 125.00 and 195.00. On Wednesday in Colorado live traded from 120.00-123.00. In the Western Cornbelt on Thursday live traded from 123.00-125.00 and on Wednesday dressed traded at 195.00.

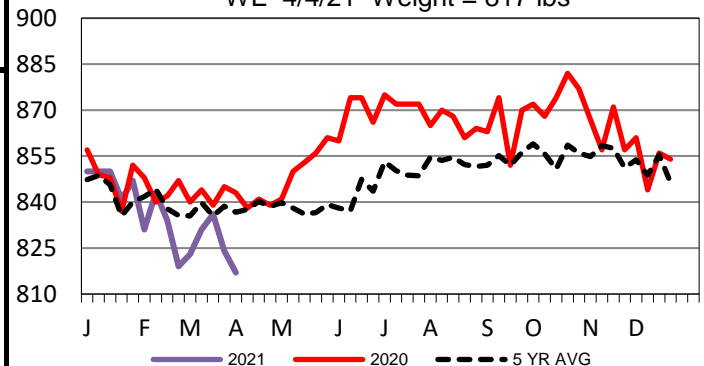
Kansas Formula Carcass Weights

WE 4/4/21 Weight = 861 lbs



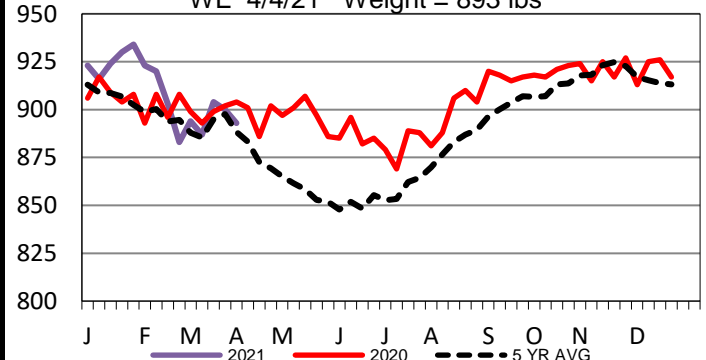
TX-OK-NM Formula Carcass Weights

WE 4/4/21 Weight = 817 lbs



Nebraska Formula Carcass Weights

WE 4/4/21 Weight = 893 lbs



USDA Livestock, Poultry and Grain Market News

St. Joseph, Missouri

Phone: 816-676-7000

stjoe.lpgmn@ams.usda.gov