

Daily Direct Steer and Heifer Slaughter Cattle Summary

For Trade on:

Thursday, April 08, 2021

LM CT100	5-AREA	LM CT109
Neg. Cash Volume:	15,724	Dressed Formula Vol: 33,626
Live Steer Avg:	\$123.94	Steer/Heifer Avg: \$188.17
Live Heifer Avg:	\$123.14	Dressed Neg. Grid Vol: 1,808
Dressed Steer Avg:	\$195.41	Steer/Heifer Avg: \$190.43
Dressed Heifer Avg:	\$195.68	TOTAL VOLUME: 51,158
LM CT106	TOTAL WK TO DATE VOLUME:	231,647
Committed:	72,328	Delivered: 63,623

LM CT118	TX-OK-NM	LM CT109
Neg. Cash Volume:	419	Dressed Formula Vol: 11,156
Live Steer Avg:	\$121.00	Steer/Heifer Avg: \$186.25
Live Heifer Avg:	\$121.00	Dressed Neg. Grid Vol: 0
Dressed Steer Avg:	\$0.00	Steer/Heifer Avg: \$0.00
Dressed Heifer Avg:	\$0.00	TOTAL VOLUME: 11,575
LM CT106	TOTAL WK TO DATE VOLUME:	52,445
Committed:	17,246	Delivered: 17,375

LM CT121	KANSAS	LM CT109
Neg. Cash Volume:	1,508	Dressed Formula Vol: 13,541
Live Steer Avg:	\$122.70	Steer/Heifer Avg: \$187.66
Live Heifer Avg:	\$122.02	Dressed Neg. Grid Vol: 0
Dressed Steer Avg:	\$194.00	Steer/Heifer Avg: \$0.00
Dressed Heifer Avg:	\$0.00	TOTAL VOLUME: 15,049
LM CT106	TOTAL WK TO DATE VOLUME:	68,587
Committed:	25,738	Delivered: 18,398

LM CT124	NEBRASKA	LM CT109
Neg. Cash Volume:	5,159	Dressed Formula Vol: 4,412
Live Steer Avg:	\$124.31	Steer/Heifer Avg: \$192.62
Live Heifer Avg:	\$123.00	Dressed Neg. Grid Vol: 1,119
Dressed Steer Avg:	\$195.74	Steer/Heifer Avg: \$189.54
Dressed Heifer Avg:	\$195.61	TOTAL VOLUME: 10,690
LM CT106	TOTAL WK TO DATE VOLUME:	58,562
Committed:	17,411	Delivered: 12,155

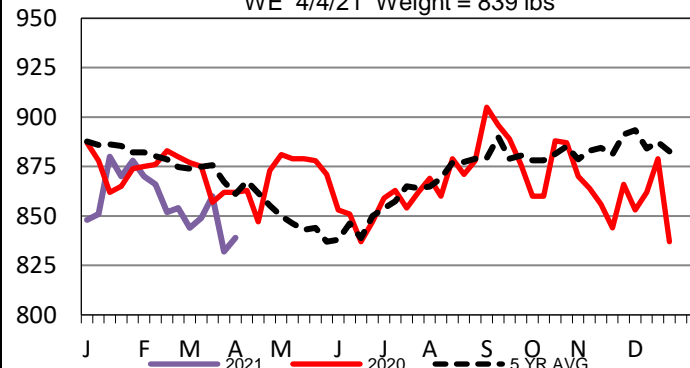
LM CT134	COLORADO	LM CT109
Neg. Cash Volume:	0	Dressed Formula Vol: 1,621
Live Steer Avg:	\$0.00	Steer/Heifer Avg: \$189.01
Live Heifer Avg:	\$0.00	Dressed Neg. Grid Vol: 164
Dressed Steer Avg:	\$0.00	Steer/Heifer Avg: \$188.51
Dressed Heifer Avg:	\$0.00	TOTAL VOLUME: 1,785
LM CT106	TOTAL WK TO DATE VOLUME:	17,246
Committed:	3,122	Delivered: 9,393

LM CT137	IA-MN	LM CT109
Neg. Cash Volume:	8,638	Dressed Formula Vol: 3,206
Live Steer Avg:	\$124.00	Steer/Heifer Avg: \$190.88
Live Heifer Avg:	\$124.20	Dressed Neg. Grid Vol: 537
Dressed Steer Avg:	\$195.22	Steer/Heifer Avg: \$192.87
Dressed Heifer Avg:	\$195.71	TOTAL VOLUME: 0
LM CT106	TOTAL WK TO DATE VOLUME:	35,900
Committed:	8,811	Delivered: 6,302

For Thursday cash trading in the Western Cornbelt was light on moderate demand with live steady to 2.00 higher from 123.00-125.00 and dressed steady at 195.00. Cash trading was limited on light demand in the Southern Plains, and light on moderate demand in Nebraska with few live in Nebraska from 123.00-124.50. The last reported market was on Wednesday with live at 120.00 in the Southern Plains and live and dressed at 123.00 and 195.00, respectively, in Nebraska. Cash trading in Colorado was at a standstill. On Wednesday with live from 120.00-123.00.

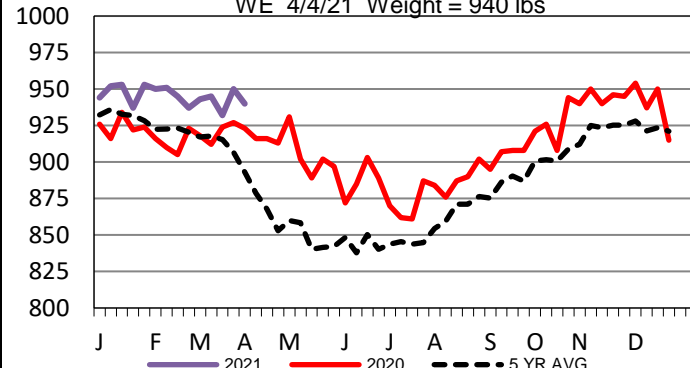
Colorado Formula Carcass Weights

WE 4/4/21 Weight = 839 lbs



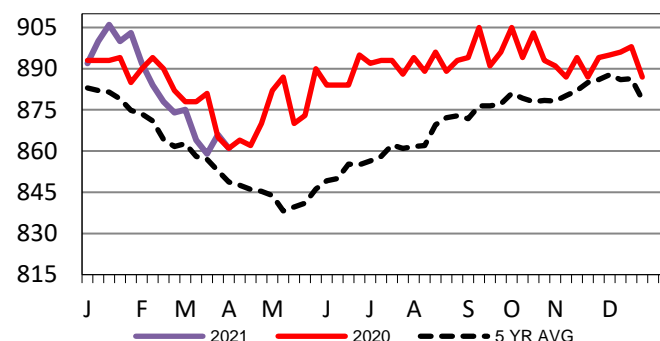
Iowa-Minnesota Formula Carcass Weights

WE 4/4/21 Weight = 940 lbs



Kansas Formula Carcass Weights

WE 4/4/21 Weight = 861 lbs



USDA Livestock, Poultry and Grain Market News

St. Joseph, Missouri

Phone: 816-676-7000

stjoe.lpgmn@ams.usda.gov