

Daily Direct Steer and Heifer Slaughter Cattle Summary

For Trade on:

Friday, March 26, 2021

LM CT100	5-AREA	LM CT109
Neg. Cash Volume:	3,350	Dressed Formula Vol: 34,079
Live Steer Avg:	\$116.58	Steer/Heifer Avg: \$183.55
Live Heifer Avg:	\$116.37	Dressed Neg. Grid Vol: 2,556
Dressed Steer Avg:	\$185.00	Steer/Heifer Avg: \$187.13
Dressed Heifer Avg:	\$0.00	TOTAL VOLUME: 39,985
LM CT106	TOTAL WK TO DATE VOLUME:	263,040
Committed:	98,941	Delivered: 106,944

LM CT118	TX-OK-NM	LM CT109
Neg. Cash Volume:	0	Dressed Formula Vol: 8,852
Live Steer Avg:	\$0.00	Steer/Heifer Avg: \$181.16
Live Heifer Avg:	\$0.00	Dressed Neg. Grid Vol: 0
Dressed Steer Avg:	\$0.00	Steer/Heifer Avg: \$0.00
Dressed Heifer Avg:	\$0.00	TOTAL VOLUME: 8,852
LM CT106	TOTAL WK TO DATE VOLUME:	58,443
Committed:	32,940	Delivered: 28,584

LM CT121	KANSAS	LM CT109
Neg. Cash Volume:	0	Dressed Formula Vol: 13,006
Live Steer Avg:	\$0.00	Steer/Heifer Avg: \$184.79
Live Heifer Avg:	\$0.00	Dressed Neg. Grid Vol: 386
Dressed Steer Avg:	\$0.00	Steer/Heifer Avg: \$200.24
Dressed Heifer Avg:	\$0.00	TOTAL VOLUME: 13,392
LM CT106	TOTAL WK TO DATE VOLUME:	76,484
Committed:	32,637	Delivered: 31,161

LM CT124	NEBRASKA	LM CT109
Neg. Cash Volume:	788	Dressed Formula Vol: 5,103
Live Steer Avg:	\$116.00	Steer/Heifer Avg: \$184.64
Live Heifer Avg:	\$116.00	Dressed Neg. Grid Vol: 728
Dressed Steer Avg:	\$185.00	Steer/Heifer Avg: \$184.98
Dressed Heifer Avg:	\$0.00	TOTAL VOLUME: 6,619
LM CT106	TOTAL WK TO DATE VOLUME:	61,936
Committed:	14,179	Delivered: 23,292

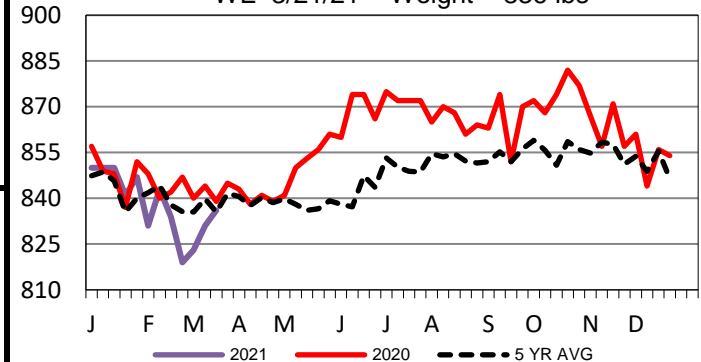
LM CT134	COLORADO	LM CT109
Neg. Cash Volume:	602	Dressed Formula Vol: 2,395
Live Steer Avg:	\$116.00	Steer/Heifer Avg: \$184.76
Live Heifer Avg:	\$116.00	Dressed Neg. Grid Vol: 861
Dressed Steer Avg:	\$185.00	Steer/Heifer Avg: \$186.17
Dressed Heifer Avg:	\$0.00	TOTAL VOLUME: 3,858
LM CT106	TOTAL WK TO DATE VOLUME:	28,787
Committed:	9,989	Delivered: 7,382

LM CT137	IA-MN	LM CT109
Neg. Cash Volume:	1,960	Dressed Formula Vol: 4,938
Live Steer Avg:	\$116.94	Steer/Heifer Avg: \$183.11
Live Heifer Avg:	\$117.00	Dressed Neg. Grid Vol: 581
Dressed Steer Avg:	\$0.00	Steer/Heifer Avg: \$182.57
Dressed Heifer Avg:	\$0.00	TOTAL VOLUME: 7,479
LM CT106	TOTAL WK TO DATE VOLUME:	38,180
Committed:	9,196	Delivered: 16,525

For Friday cash trading was limited on light demand in Nebraska, Colorado, and the Western Cornbelt, and at a standstill in the Southern Plains. On Wednesday in the Southern Plains live traded at 115.00. In Nebraska live traded at 116.00 on Thursday and dressed traded at 185.00 on Wednesday. On Wednesday in Colorado live traded at 116.00. In the Western Cornbelt for the week live have traded steady to 2.00 higher from 115.00-117.00 and dressed mostly 3.00 to 5.00 higher at 185.00 compared to last week.

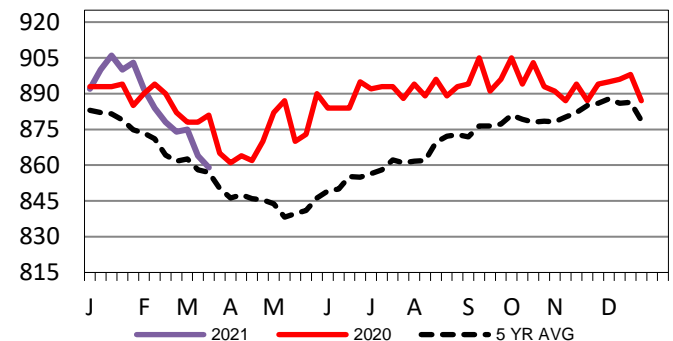
TX-OK-NM Formula Carcass Weights

WE 3/21/21 Weight = 836 lbs



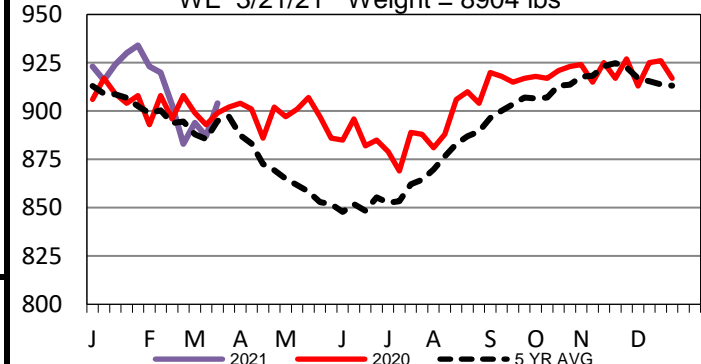
Kansas Formula Carcass Weights

WE 3/21/21 Weight = 859 lbs



Nebraska Formula Carcass Weights

WE 3/21/21 Weight = 8904 lbs



USDA Livestock, Poultry and Grain Market News

St. Joseph, Missouri

Phone: 816-676-7000

stjoe.lpgmn@ams.usda.gov