

Daily Direct Steer and Heifer Slaughter Cattle Summary

For Trade on:

Thursday, March 25, 2021

LM CT100	5-AREA	LM CT109
Neg. Cash Volume:	23,022	Dressed Formula Vol: 27,237
Live Steer Avg:	\$115.83	Steer/Heifer Avg: \$184.33
Live Heifer Avg:	\$116.08	Dressed Neg. Grid Vol: 801
Dressed Steer Avg:	\$184.42	Steer/Heifer Avg: \$182.13
Dressed Heifer Avg:	\$185.00	TOTAL VOLUME: 51,060
LM CT106	TOTAL WK TO DATE VOLUME:	223,058
Committed:	69,816	Delivered: 64,927

LM CT118	TX-OK-NM	LM CT109
Neg. Cash Volume:	115	Dressed Formula Vol: 5,941
Live Steer Avg:	\$155.00	Steer/Heifer Avg: \$181.77
Live Heifer Avg:	\$0.00	Dressed Neg. Grid Vol: 0
Dressed Steer Avg:	\$0.00	Steer/Heifer Avg: \$0.00
Dressed Heifer Avg:	\$0.00	TOTAL VOLUME: 6,056
LM CT106	TOTAL WK TO DATE VOLUME:	49,591
Committed:	18,362	Delivered: 18,391

LM CT121	KANSAS	LM CT109
Neg. Cash Volume:	1,995	Dressed Formula Vol: 9,814
Live Steer Avg:	\$115.91	Steer/Heifer Avg: \$182.83
Live Heifer Avg:	\$116.00	Dressed Neg. Grid Vol: 0
Dressed Steer Avg:	\$0.00	Steer/Heifer Avg: \$0.00
Dressed Heifer Avg:	\$0.00	TOTAL VOLUME: 11,809
LM CT106	TOTAL WK TO DATE VOLUME:	63,092
Committed:	19,292	Delivered: 16,856

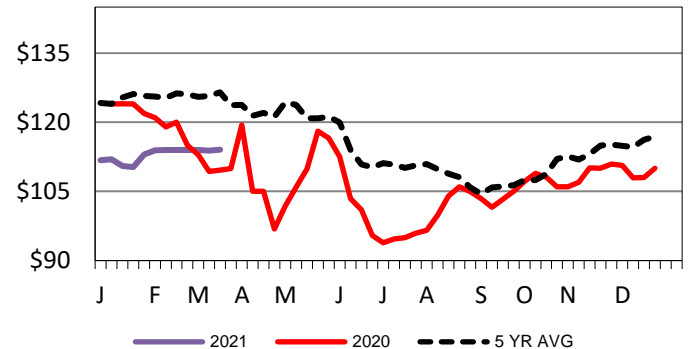
LM CT124	NEBRASKA	LM CT109
Neg. Cash Volume:	10,958	Dressed Formula Vol: 2,700
Live Steer Avg:	\$115.96	Steer/Heifer Avg: \$185.89
Live Heifer Avg:	\$115.97	Dressed Neg. Grid Vol: 213
Dressed Steer Avg:	\$185.00	Steer/Heifer Avg: \$177.75
Dressed Heifer Avg:	\$0.00	TOTAL VOLUME: 13,871
LM CT106	TOTAL WK TO DATE VOLUME:	55,317
Committed:	16,420	Delivered: 16,052

LM CT134	COLORADO	LM CT109
Neg. Cash Volume:	3,694	Dressed Formula Vol: 6,180
Live Steer Avg:	\$115.81	Steer/Heifer Avg: \$189.12
Live Heifer Avg:	\$116.00	Dressed Neg. Grid Vol: 177
Dressed Steer Avg:	\$0.00	Steer/Heifer Avg: \$183.09
Dressed Heifer Avg:	\$0.00	TOTAL VOLUME: 10,051
LM CT106	TOTAL WK TO DATE VOLUME:	24,929
Committed:	4,187	Delivered: 5,893

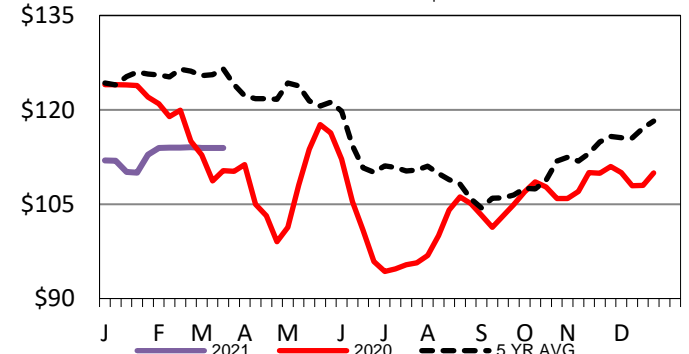
LM CT137	IA-MN	LM CT109
Neg. Cash Volume:	6,260	Dressed Formula Vol: 2,929
Live Steer Avg:	\$115.46	Steer/Heifer Avg: \$182.98
Live Heifer Avg:	\$116.56	Dressed Neg. Grid Vol: 411
Dressed Steer Avg:	\$184.73	Steer/Heifer Avg: \$184.14
Dressed Heifer Avg:	\$185.00	TOTAL VOLUME: 9,600
LM CT106	TOTAL WK TO DATE VOLUME:	30,701
Committed:	11,555	Delivered: 7,735

For Thursday cash trading in the Southern Plains was limited on light demand. The last reported market was on Wednesday with live purchases at 115.00. In Nebraska ash trading was slow on light to moderate demand with live steady to 1.00 higher at 116.00. The last reported dressed market was on Wednesday at 185.00. Cash trading in Colorado was light on light to moderate demand with live 2.00 higher at 116.00. In the Western Cornbelt, cash trading was limited on light to moderate demand with a few live and dressed 115.00 and 185.00, respectively.

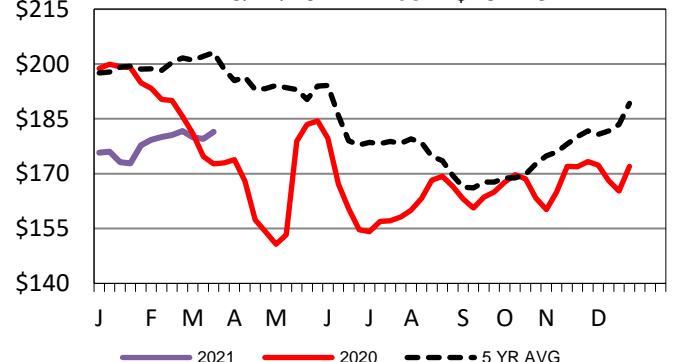
TX-OK-NM Wkly Live Steer Wtd Avg
WE Price 3/21/2021 = \$ 114.06



Kansas Weekly Live Steer Weighted Average
WE 3/21/2021 Price = \$113.95



Nebraska Weekly DressedSteer Weighted Avg
WE 3/21/2021 Price = \$181.43



USDA Livestock, Poultry and Grain Market News

St. Joseph, Missouri

Phone: 816-676-7000

stjoe.lpgmn@ams.usda.gov