

## Daily Direct Steer and Heifer Slaughter Cattle Summary

For Trade on:

Wednesday, March 24, 2021

<a href="#">LM CT100</a>	<b>5-AREA</b>	<a href="#">LM CT109</a>
<b>Neg. Cash Volume:</b>	57,271	<b>Dressed Formula Vol:</b> 30,784
Live Steer Avg:	\$115.33	Steer/Heifer Avg: \$185.29
Live Heifer Avg:	\$115.13	<b>Dressed Neg. Grid Vol:</b> 147
Dressed Steer Avg:	\$184.88	Steer/Heifer Avg: \$184.74
Dressed Heifer Avg:	\$184.61	<b>TOTAL VOLUME:</b> 88,202
<a href="#">LM CT106</a>	<b>TOTAL WK TO DATE VOLUME:</b>	<b>171,998</b>
<b>Committed:</b>	<b>94,853</b>	<b>Delivered:</b> 77,613

<a href="#">LM CT118</a>	<b>TX-OK-NM</b>	<a href="#">LM CT109</a>
<b>Neg. Cash Volume:</b>	8,542	<b>Dressed Formula Vol:</b> 10,610
Live Steer Avg:	\$114.98	Steer/Heifer Avg: \$183.41
Live Heifer Avg:	\$115.00	<b>Dressed Neg. Grid Vol:</b> 0
Dressed Steer Avg:	\$0.00	Steer/Heifer Avg: \$0.00
Dressed Heifer Avg:	\$0.00	<b>TOTAL VOLUME:</b> 19,152
<a href="#">LM CT106</a>	<b>TOTAL WK TO DATE VOLUME:</b>	<b>43,535</b>
<b>Committed:</b>	<b>17,212</b>	<b>Delivered:</b> 20,330

<a href="#">LM CT121</a>	<b>KANSAS</b>	<a href="#">LM CT109</a>
<b>Neg. Cash Volume:</b>	14,923	<b>Dressed Formula Vol:</b> 5,934
Live Steer Avg:	\$115.00	Steer/Heifer Avg: \$183.45
Live Heifer Avg:	\$114.99	<b>Dressed Neg. Grid Vol:</b> 0
Dressed Steer Avg:	\$185.00	Steer/Heifer Avg: \$0.00
Dressed Heifer Avg:	\$184.73	<b>TOTAL VOLUME:</b> 20,857
<a href="#">LM CT106</a>	<b>TOTAL WK TO DATE VOLUME:</b>	<b>51,283</b>
<b>Committed:</b>	<b>17,866</b>	<b>Delivered:</b> 16,725

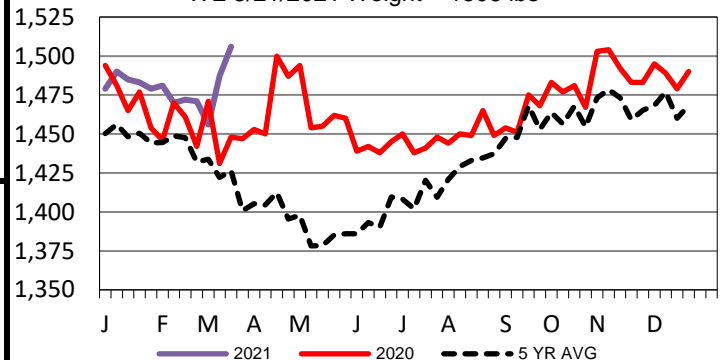
<a href="#">LM CT124</a>	<b>NEBRASKA</b>	<a href="#">LM CT109</a>
<b>Neg. Cash Volume:</b>	18,659	<b>Dressed Formula Vol:</b> 10,732
Live Steer Avg:	\$115.38	Steer/Heifer Avg: \$188.93
Live Heifer Avg:	\$115.51	<b>Dressed Neg. Grid Vol:</b> 0
Dressed Steer Avg:	\$184.92	Steer/Heifer Avg: \$0.00
Dressed Heifer Avg:	\$184.75	<b>TOTAL VOLUME:</b> 29,391
<a href="#">LM CT106</a>	<b>TOTAL WK TO DATE VOLUME:</b>	<b>41,446</b>
<b>Committed:</b>	<b>24,641</b>	<b>Delivered:</b> 16,245

<a href="#">LM CT134</a>	<b>COLORADO</b>	<a href="#">LM CT109</a>
<b>Neg. Cash Volume:</b>	1,557	<b>Dressed Formula Vol:</b> 1,246
Live Steer Avg:	\$115.60	Steer/Heifer Avg: \$180.63
Live Heifer Avg:	\$115.00	<b>Dressed Neg. Grid Vol:</b> 136
Dressed Steer Avg:	\$0.00	Steer/Heifer Avg: \$184.29
Dressed Heifer Avg:	\$0.00	<b>TOTAL VOLUME:</b> 2,939
<a href="#">LM CT106</a>	<b>TOTAL WK TO DATE VOLUME:</b>	<b>14,878</b>
<b>Committed:</b>	<b>7,468</b>	<b>Delivered:</b> 8,892

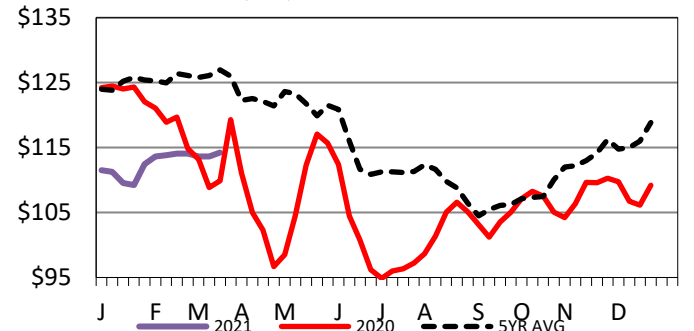
<a href="#">LM CT137</a>	<b>IA-MN</b>	<a href="#">LM CT109</a>
<b>Neg. Cash Volume:</b>	13,590	<b>Dressed Formula Vol:</b> 2,280
Live Steer Avg:	\$116.23	Steer/Heifer Avg: \$184.08
Live Heifer Avg:	\$115.33	<b>Dressed Neg. Grid Vol:</b> 11
Dressed Steer Avg:	\$184.77	Steer/Heifer Avg: \$190.37
Dressed Heifer Avg:	\$184.51	<b>TOTAL VOLUME:</b> 15,881
<a href="#">LM CT106</a>	<b>TOTAL WK TO DATE VOLUME:</b>	<b>21,101</b>
<b>Committed:</b>	<b>17,214</b>	<b>Delivered:</b> 8,281

For Wednesday cash trading and demand in the Southern Plains were light to moderate with live 1.00 higher at 115.00. Cash trading and demand in Nebraska were light to moderate with live 1.00 to 2.00 higher from 115.00-116.00 and dressed 3.00 to 5.00 higher at 185.00. Cash trading in the Western Cornbelt was light on light to moderate demand with a few live and dressed at 116.00 and 185.00. Last week live traded from 114.00-115.00 and dressed traded from 180.00- 182.00. In Colorado, cash trading was limited on light demand. Last week live purchases traded at 114.00.

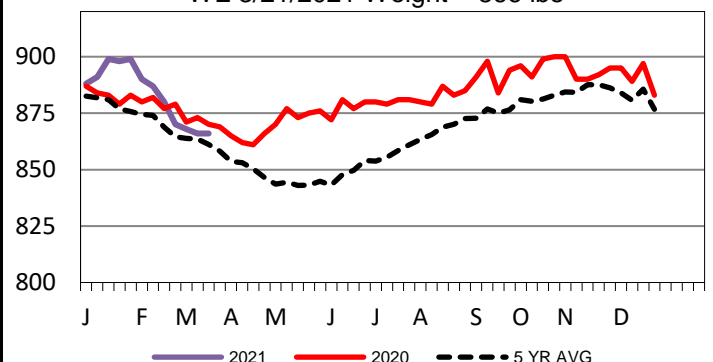
**5-Area Negotiated Cash Live Steer Weights**  
WE 3/21/2021 Weight = 1506 lbs



**5-Area Live Steer Weighted Average**  
WE 3/21/2021 Price = \$114.23



**5-Area Formula Carcass Weight**  
WE 3/21/2021 Weight = 866 lbs



## USDA Livestock, Poultry and Grain Market News

St. Joseph, Missouri

Phone: 816-676-7000

[stjoe.lpgmn@ams.usda.gov](mailto:stjoe.lpgmn@ams.usda.gov)