

## Daily Direct Steer and Heifer Slaughter Cattle Summary

For Trade on:

Wednesday, March 10, 2021

<a href="#">LM CT100</a>	5-AREA	<a href="#">LM CT109</a>
Neg. Cash Volume:	43,170	Dressed Formula Vol: 30,759
Live Steer Avg:	\$113.36	Steer/Heifer Avg: \$184.29
Live Heifer Avg:	\$113.19	Dressed Neg. Grid Vol: 2,130
Dressed Steer Avg:	\$179.33	Steer/Heifer Avg: \$184.74
Dressed Heifer Avg:	\$179.63	<b>TOTAL VOLUME: 76,059</b>
<a href="#">LM CT106</a>	<b>TOTAL WK TO DATE VOLUME: 172,178</b>	
Committed:	82,724	Delivered: 68,341

<a href="#">LM CT118</a>	TX-OK-NM	<a href="#">LM CT109</a>
Neg. Cash Volume:	2,038	Dressed Formula Vol: 9,380
Live Steer Avg:	\$113.77	Steer/Heifer Avg: \$182.01
Live Heifer Avg:	\$114.00	Dressed Neg. Grid Vol: 0
Dressed Steer Avg:	\$0.00	Steer/Heifer Avg: \$0.00
Dressed Heifer Avg:	\$0.00	<b>TOTAL VOLUME: 11,418</b>
<a href="#">LM CT106</a>	<b>TOTAL WK TO DATE VOLUME: 36,210</b>	
Committed:	12,814	Delivered: 15,574

<a href="#">LM CT121</a>	KANSAS	<a href="#">LM CT109</a>
Neg. Cash Volume:	8,296	Dressed Formula Vol: 7,575
Live Steer Avg:	\$113.90	Steer/Heifer Avg: \$184.64
Live Heifer Avg:	\$113.89	Dressed Neg. Grid Vol: 0
Dressed Steer Avg:	\$180.00	Steer/Heifer Avg: \$0.00
Dressed Heifer Avg:	\$0.00	<b>TOTAL VOLUME: 15,871</b>
<a href="#">LM CT106</a>	<b>TOTAL WK TO DATE VOLUME: 45,156</b>	
Committed:	23,713	Delivered: 18,861

<a href="#">LM CT124</a>	NEBRASKA	<a href="#">LM CT109</a>
Neg. Cash Volume:	18,496	Dressed Formula Vol: 9,047
Live Steer Avg:	\$113.29	Steer/Heifer Avg: \$186.27
Live Heifer Avg:	\$113.52	Dressed Neg. Grid Vol: 594
Dressed Steer Avg:	\$179.48	Steer/Heifer Avg: \$187.25
Dressed Heifer Avg:	\$179.68	<b>TOTAL VOLUME: 28,137</b>
<a href="#">LM CT106</a>	<b>TOTAL WK TO DATE VOLUME: 53,584</b>	
Committed:	27,171	Delivered: 15,180

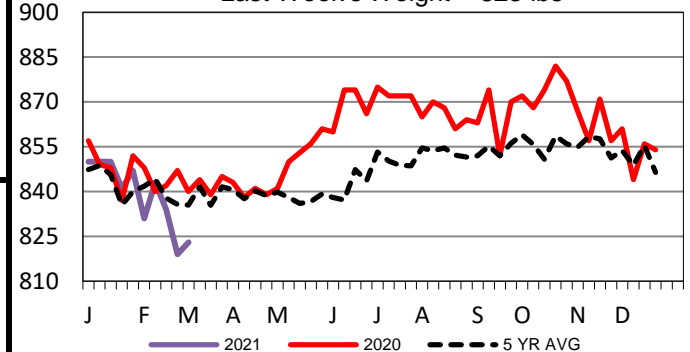
<a href="#">LM CT134</a>	COLORADO	<a href="#">LM CT109</a>
Neg. Cash Volume:	2,359	Dressed Formula Vol: 1,182
Live Steer Avg:	\$114.00	Steer/Heifer Avg: \$191.69
Live Heifer Avg:	\$114.00	Dressed Neg. Grid Vol: 785
Dressed Steer Avg:	\$0.00	Steer/Heifer Avg: \$182.21
Dressed Heifer Avg:	\$0.00	<b>TOTAL VOLUME: 4,326</b>
<a href="#">LM CT106</a>	<b>TOTAL WK TO DATE VOLUME: 14,447</b>	
Committed:	6,114	Delivered: 9,507

<a href="#">LM CT137</a>	IA-MN	<a href="#">LM CT109</a>
Neg. Cash Volume:	11,981	Dressed Formula Vol: 3,433
Live Steer Avg:	\$112.44	Steer/Heifer Avg: \$182.05
Live Heifer Avg:	\$112.06	Dressed Neg. Grid Vol: 791
Dressed Steer Avg:	\$179.00	Steer/Heifer Avg: \$185.31
Dressed Heifer Avg:	\$179.58	<b>TOTAL VOLUME: 16,205</b>
<a href="#">LM CT106</a>	<b>TOTAL WK TO DATE VOLUME: 23,306</b>	
Committed:	12,912	Delivered: 9,219

For Wednesday cash trading was light on light to moderate demand in the Southern Plains with live steady at 114.00. Cash trading and demand in Nebraska were light to moderate with live steady to 1.00 lower from 113.00-114.00 and dressed mostly steady at 180.00. In Colorado cash trading was slow on light demand with live steady at 114.00. In the Western Cornbelt cash trading was light on light to moderate demand with live steady to 1.00 lower from 112.00-113.00 and dressed steady to 2.00 lower from 178.00-180.00 compared to last week.

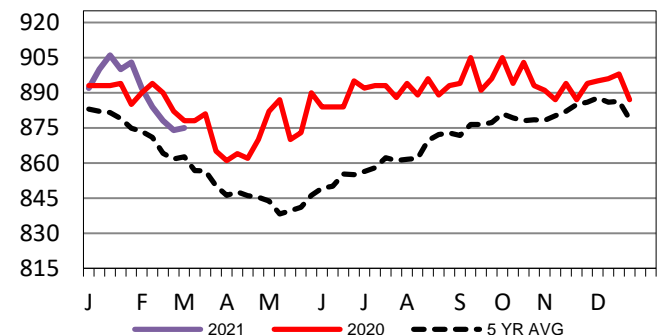
## TX-OK-NM Formula Carcass Weights

Last Week's Weight = 823 lbs



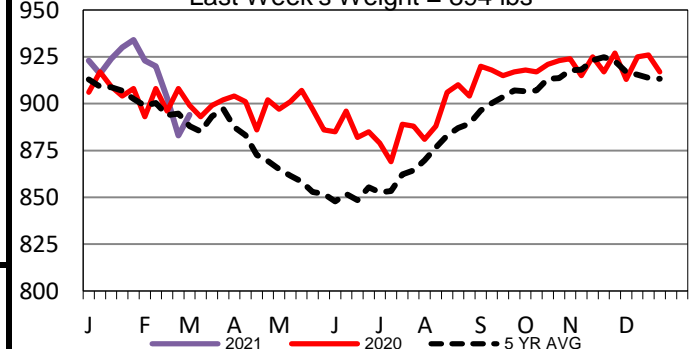
## Kansas Formula Carcass Weights

Last Week's Weight = 875 lbs



## Nebraska Formula Carcass Weights

Last Week's Weight = 894 lbs



## USDA Livestock, Poultry and Grain Market News

St. Joseph, Missouri

Phone: 816-676-7000

[stjoe.lpgmn@ams.usda.gov](mailto:stjoe.lpgmn@ams.usda.gov)