

## Daily Direct Steer and Heifer Slaughter Cattle Summary

For Trade on:

Tuesday, March 09, 2021

<a href="#">LM_CT100</a>	<b>5-AREA</b>	<a href="#">LM_CT109</a>
<b>Neg. Cash Volume:</b>	21,536	<b>Dressed Formula Vol:</b> 23,318
<b>Live Steer Avg:</b>	\$113.87	<b>Steer/Heifer Avg:</b> \$187.97
<b>Live Heifer Avg:</b>	\$113.79	<b>Dressed Neg. Grid Vol:</b> 2,339
<b>Dressed Steer Avg:</b>	\$177.75	<b>Steer/Heifer Avg:</b> \$185.34
<b>Dressed Heifer Avg:</b>	\$0.00	<b>TOTAL VOLUME:</b> 47,193
<a href="#">LM_CT106</a>	<b>TOTAL WK TO DATE VOLUME:</b>	<b>96,299</b>
<b>Committed:</b>	<b>93,194</b>	<b>Delivered:</b> 66,880

<a href="#">LM_CT118</a>	<b>TX-OK-NM</b>	<a href="#">LM_CT109</a>
<b>Neg. Cash Volume:</b>	4,483	<b>Dressed Formula Vol:</b> 5,522
<b>Live Steer Avg:</b>	\$113.90	<b>Steer/Heifer Avg:</b> \$182.69
<b>Live Heifer Avg:</b>	\$113.76	<b>Dressed Neg. Grid Vol:</b> 0
<b>Dressed Steer Avg:</b>	\$0.00	<b>Steer/Heifer Avg:</b> \$0.00
<b>Dressed Heifer Avg:</b>	\$0.00	<b>TOTAL VOLUME:</b> 10,005
<a href="#">LM_CT106</a>	<b>TOTAL WK TO DATE VOLUME:</b>	<b>24,792</b>
<b>Committed:</b>	<b>36,484</b>	<b>Delivered:</b> 20,857

<a href="#">LM_CT121</a>	<b>KANSAS</b>	<a href="#">LM_CT109</a>
<b>Neg. Cash Volume:</b>	5,960	<b>Dressed Formula Vol:</b> 3,840
<b>Live Steer Avg:</b>	\$113.95	<b>Steer/Heifer Avg:</b> \$184.09
<b>Live Heifer Avg:</b>	\$113.65	<b>Dressed Neg. Grid Vol:</b> 0
<b>Dressed Steer Avg:</b>	\$0.00	<b>Steer/Heifer Avg:</b> \$0.00
<b>Dressed Heifer Avg:</b>	\$0.00	<b>TOTAL VOLUME:</b> 9,800
<a href="#">LM_CT106</a>	<b>TOTAL WK TO DATE VOLUME:</b>	<b>29,285</b>
<b>Committed:</b>	<b>21,692</b>	<b>Delivered:</b> 15,105

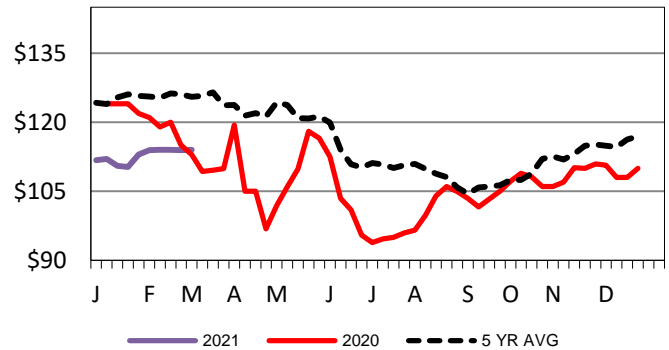
<a href="#">LM_CT124</a>	<b>NEBRASKA</b>	<a href="#">LM_CT109</a>
<b>Neg. Cash Volume:</b>	9,098	<b>Dressed Formula Vol:</b> 5,514
<b>Live Steer Avg:</b>	\$113.77	<b>Steer/Heifer Avg:</b> \$193.82
<b>Live Heifer Avg:</b>	\$113.82	<b>Dressed Neg. Grid Vol:</b> 1,080
<b>Dressed Steer Avg:</b>	\$0.00	<b>Steer/Heifer Avg:</b> \$186.78
<b>Dressed Heifer Avg:</b>	\$0.00	<b>TOTAL VOLUME:</b> 15,692
<a href="#">LM_CT106</a>	<b>TOTAL WK TO DATE VOLUME:</b>	<b>25,447</b>
<b>Committed:</b>	<b>14,153</b>	<b>Delivered:</b> 12,291

<a href="#">LM_CT134</a>	<b>COLORADO</b>	<a href="#">LM_CT109</a>
<b>Neg. Cash Volume:</b>	1,600	<b>Dressed Formula Vol:</b> 5,781
<b>Live Steer Avg:</b>	\$114.00	<b>Steer/Heifer Avg:</b> \$192.30
<b>Live Heifer Avg:</b>	\$114.00	<b>Dressed Neg. Grid Vol:</b> 962
<b>Dressed Steer Avg:</b>	\$0.00	<b>Steer/Heifer Avg:</b> \$182.90
<b>Dressed Heifer Avg:</b>	\$0.00	<b>TOTAL VOLUME:</b> 8,343
<a href="#">LM_CT106</a>	<b>TOTAL WK TO DATE VOLUME:</b>	<b>10,121</b>
<b>Committed:</b>	<b>14,442</b>	<b>Delivered:</b> 10,829

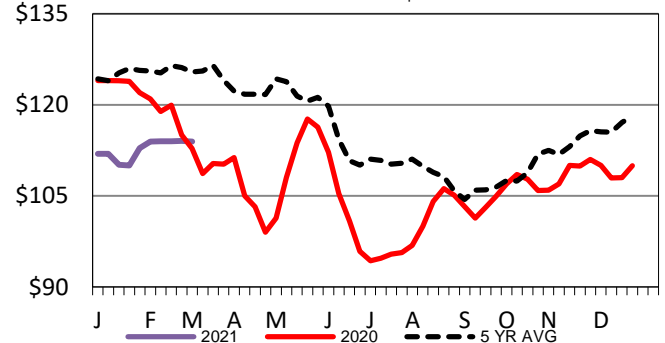
<a href="#">LM_CT137</a>	<b>IA-MN</b>	<a href="#">LM_CT109</a>
<b>Neg. Cash Volume:</b>	395	<b>Dressed Formula Vol:</b> 2,699
<b>Live Steer Avg:</b>	\$0.00	<b>Steer/Heifer Avg:</b> \$183.01
<b>Live Heifer Avg:</b>	\$0.00	<b>Dressed Neg. Grid Vol:</b> 297
<b>Dressed Steer Avg:</b>	\$177.75	<b>Steer/Heifer Avg:</b> \$187.99
<b>Dressed Heifer Avg:</b>	\$0.00	<b>TOTAL VOLUME:</b> 3,391
<a href="#">LM_CT106</a>	<b>TOTAL WK TO DATE VOLUME:</b>	<b>7,101</b>
<b>Committed:</b>	<b>6,423</b>	<b>Delivered:</b> 7,798

For Tuesday cash trading in the Southern Plains was slow on light demand with a few live steady compared to last week at 114.00 on a light test. Cash trading in Nebraska and Colorado was slow on light demand with a few live steady to 1.00 higher compared to last week at 114.00. The last reported dressed market in Nebraska was last week at 180.00. Cash trading was mostly inactive on light demand in the Western Cornbelt. Last week in the Western Cornbelt live traded from 112.00-114.00 and dressed traded at 180.00.

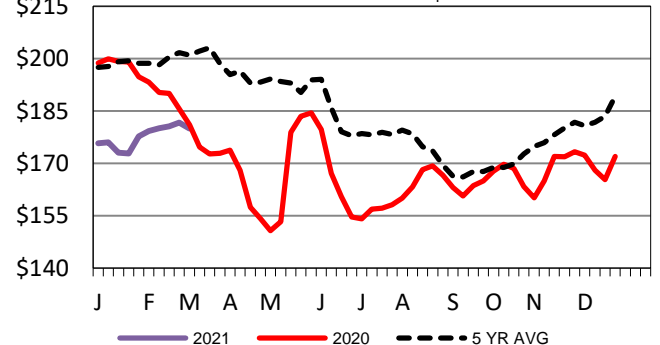
**TX-OK-NM Wkly Live Steer Wtd Avg**  
Last week's price= \$ 114.01



**Kansas Weekly Live Steer Weighted Average**  
Last Week's Price = \$113.95



**Nebraska Weekly Dressed Steer Weighted Avg**  
Last Week's Price = \$179.93



## USDA Livestock, Poultry and Grain Market News

St. Joseph, Missouri

Phone: 816-676-7000

[stjoe.lpgmn@ams.usda.gov](mailto:stjoe.lpgmn@ams.usda.gov)