

## Daily Direct Steer and Heifer Slaughter Cattle Summary

For Trade on:

Monday, February 15, 2021

<a href="#">LM_CT100</a>	<b>5-AREA</b>	<a href="#">LM_CT109</a>
<b>Neg. Cash Volume:</b>	0	<b>Dressed Formula Vol:</b> 24,595
<b>Live Steer Avg:</b>	\$0.00	<b>Steer/Heifer Avg:</b> \$182.26
<b>Live Heifer Avg:</b>	\$0.00	<b>Dressed Neg. Grid Vol:</b> 2,934
<b>Dressed Steer Avg:</b>	\$0.00	<b>Steer/Heifer Avg:</b> \$181.07
<b>Dressed Heifer Avg:</b>	\$0.00	<b>TOTAL VOLUME:</b> 27,529
<a href="#">LM_CT106</a>	<b>TOTAL WK TO DATE VOLUME:</b>	27,529
<b>Committed:</b>	51,444	<b>Delivered:</b> 40,048

<a href="#">LM_CT118</a>	<b>TX-OK-NM</b>	<a href="#">LM_CT109</a>
<b>Neg. Cash Volume:</b>	0	<b>Dressed Formula Vol:</b> 4,442
<b>Live Steer Avg:</b>	\$0.00	<b>Steer/Heifer Avg:</b> \$180.23
<b>Live Heifer Avg:</b>	\$0.00	<b>Dressed Neg. Grid Vol:</b> 68
<b>Dressed Steer Avg:</b>	\$0.00	<b>Steer/Heifer Avg:</b> \$178.79
<b>Dressed Heifer Avg:</b>	\$0.00	<b>TOTAL VOLUME:</b> 4,510
<a href="#">LM_CT106</a>	<b>TOTAL WK TO DATE VOLUME:</b>	4,510
<b>Committed:</b>	28,606	<b>Delivered:</b> 6,990

<a href="#">LM_CT121</a>	<b>KANSAS</b>	<a href="#">LM_CT109</a>
<b>Neg. Cash Volume:</b>	0	<b>Dressed Formula Vol:</b> 15,118
<b>Live Steer Avg:</b>	\$0.00	<b>Steer/Heifer Avg:</b> \$182.15
<b>Live Heifer Avg:</b>	\$0.00	<b>Dressed Neg. Grid Vol:</b> 982
<b>Dressed Steer Avg:</b>	\$0.00	<b>Steer/Heifer Avg:</b> \$181.13
<b>Dressed Heifer Avg:</b>	\$0.00	<b>TOTAL VOLUME:</b> 16,100
<a href="#">LM_CT106</a>	<b>TOTAL WK TO DATE VOLUME:</b>	16,100
<b>Committed:</b>	2,584	<b>Delivered:</b> 8,178

<a href="#">LM_CT124</a>	<b>NEBRASKA</b>	<a href="#">LM_CT109</a>
<b>Neg. Cash Volume:</b>	0	<b>Dressed Formula Vol:</b> 3,654
<b>Live Steer Avg:</b>	\$0.00	<b>Steer/Heifer Avg:</b> \$185.10
<b>Live Heifer Avg:</b>	\$0.00	<b>Dressed Neg. Grid Vol:</b> 900
<b>Dressed Steer Avg:</b>	\$0.00	<b>Steer/Heifer Avg:</b> \$179.75
<b>Dressed Heifer Avg:</b>	\$0.00	<b>TOTAL VOLUME:</b> 4,554
<a href="#">LM_CT106</a>	<b>TOTAL WK TO DATE VOLUME:</b>	4,554
<b>Committed:</b>	9,679	<b>Delivered:</b> 10,681

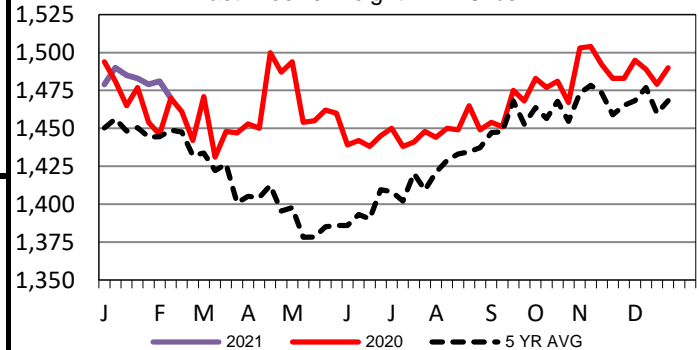
<a href="#">LM_CT134</a>	<b>COLORADO</b>	<a href="#">LM_CT109</a>
<b>Neg. Cash Volume:</b>	0	<b>Dressed Formula Vol:</b> 982
<b>Live Steer Avg:</b>	n/a	<b>Steer/Heifer Avg:</b> \$182.72
<b>Live Heifer Avg:</b>	n/a	<b>Dressed Neg. Grid Vol:</b> 298
<b>Dressed Steer Avg:</b>	n/a	<b>Steer/Heifer Avg:</b> \$182.00
<b>Dressed Heifer Avg:</b>	n/a	<b>TOTAL VOLUME:</b> 1,280
<a href="#">LM_CT106</a>	<b>TOTAL WK TO DATE VOLUME:</b>	1,280
<b>Committed:</b>	4,992	<b>Delivered:</b> 7,857

<a href="#">LM_CT137</a>	<b>IA-MN</b>	<a href="#">LM_CT109</a>
<b>Neg. Cash Volume:</b>	0	<b>Dressed Formula Vol:</b> 475
<b>Live Steer Avg:</b>	\$0.00	<b>Steer/Heifer Avg:</b> \$182.69
<b>Live Heifer Avg:</b>	\$0.00	<b>Dressed Neg. Grid Vol:</b> 800
<b>Dressed Steer Avg:</b>	\$0.00	<b>Steer/Heifer Avg:</b> \$182.10
<b>Dressed Heifer Avg:</b>	\$0.00	<b>TOTAL VOLUME:</b> 1,275
<a href="#">LM_CT106</a>	<b>TOTAL WK TO DATE VOLUME:</b>	1,275
<b>Committed:</b>	5,583	<b>Delivered:</b> 6,342

For Monday negotiated cash trading was at a standstill in all major feeding regions. Last week in the Southern Plains live purchases were at 114.00. For the prior week in Nebraska live and dressed purchases from 113.00-114.00 and at 180.00, respectively. For the previous week in the Western Cornbelt live and dressed purchases were from 112.00-115.00 and at 180.00, respectively.

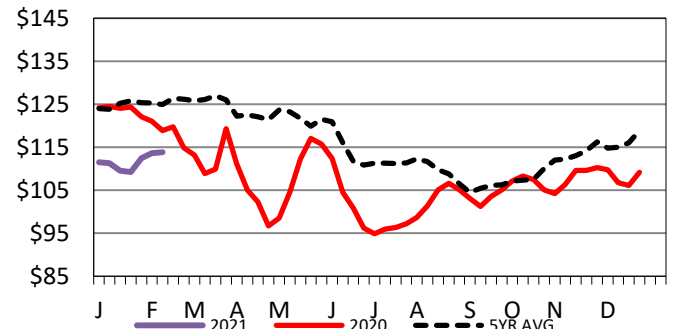
## 5-Area Negotiated Cash Live Steer Weights

Last Week's Weight = 1470 lbs



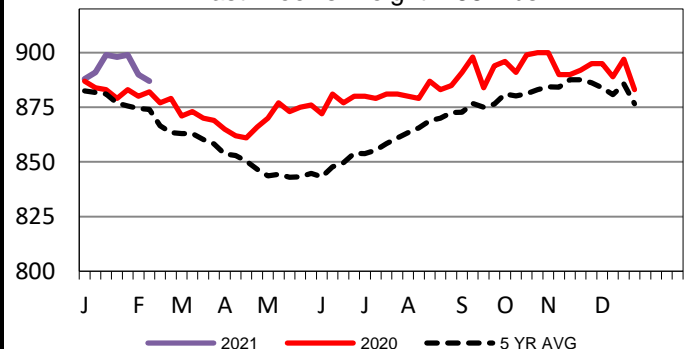
## 5-Area Live Steer Weighted Average

Last Week's Price = \$113.83



## 5-Area Formula Carcass Weight

Last Week's Weight = 887 lbs



## USDA Livestock, Poultry and Grain Market News

St. Joseph, Missouri

Phone: 816-676-7000

[stjoe.lpgmn@ams.usda.gov](mailto:stjoe.lpgmn@ams.usda.gov)