

## Daily Direct Steer and Heifer Slaughter Cattle Summary

For Trade on:

Thursday, February 11, 2021

<a href="#">LM_CT100</a>	<b>5-AREA</b>	<a href="#">LM_CT109</a>
<b>Neg. Cash Volume:</b>	16,893	<b>Dressed Formula Vol:</b> 34,438
Live Steer Avg:	\$113.87	Steer/Heifer Avg: \$183.00
Live Heifer Avg:	\$113.35	<b>Dressed Neg. Grid Vol:</b> 3,319
Dressed Steer Avg:	\$180.37	Steer/Heifer Avg: \$180.16
Dressed Heifer Avg:	\$180.00	<b>TOTAL VOLUME:</b> 54,650
<a href="#">LM_CT106</a>	<b>TOTAL WK TO DATE VOLUME:</b>	197,155
<b>Committed:</b>	74,885	<b>Delivered:</b> 62,322

<a href="#">LM_CT118</a>	<b>TX-OK-NM</b>	<a href="#">LM_CT109</a>
<b>Neg. Cash Volume:</b>	172	<b>Dressed Formula Vol:</b> 11,120
Live Steer Avg:	\$114.00	Steer/Heifer Avg: \$181.71
Live Heifer Avg:	\$0.00	<b>Dressed Neg. Grid Vol:</b> 0
Dressed Steer Avg:	\$0.00	Steer/Heifer Avg: \$0.00
Dressed Heifer Avg:	\$0.00	<b>TOTAL VOLUME:</b> 11,292
<a href="#">LM_CT106</a>	<b>TOTAL WK TO DATE VOLUME:</b>	33,083
<b>Committed:</b>	20,903	<b>Delivered:</b> 14,749

<a href="#">LM_CT121</a>	<b>KANSAS</b>	<a href="#">LM_CT109</a>
<b>Neg. Cash Volume:</b>	879	<b>Dressed Formula Vol:</b> 10,608
Live Steer Avg:	\$114.00	Steer/Heifer Avg: \$182.93
Live Heifer Avg:	\$114.00	<b>Dressed Neg. Grid Vol:</b> 0
Dressed Steer Avg:	\$0.00	Steer/Heifer Avg: \$0.00
Dressed Heifer Avg:	\$0.00	<b>TOTAL VOLUME:</b> 11,487
<a href="#">LM_CT106</a>	<b>TOTAL WK TO DATE VOLUME:</b>	64,090
<b>Committed:</b>	15,639	<b>Delivered:</b> 16,494

<a href="#">LM_CT124</a>	<b>NEBRASKA</b>	<a href="#">LM_CT109</a>
<b>Neg. Cash Volume:</b>	4,966	<b>Dressed Formula Vol:</b> 5,767
Live Steer Avg:	\$113.12	Steer/Heifer Avg: \$183.65
Live Heifer Avg:	\$113.00	<b>Dressed Neg. Grid Vol:</b> 1,271
Dressed Steer Avg:	\$180.00	Steer/Heifer Avg: \$179.88
Dressed Heifer Avg:	\$180.00	<b>TOTAL VOLUME:</b> 12,004
<a href="#">LM_CT106</a>	<b>TOTAL WK TO DATE VOLUME:</b>	51,642
<b>Committed:</b>	18,163	<b>Delivered:</b> 15,884

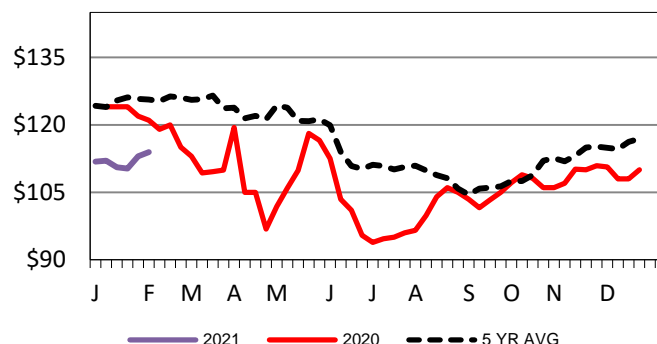
<a href="#">LM_CT134</a>	<b>COLORADO</b>	<a href="#">LM_CT109</a>
<b>Neg. Cash Volume:</b>	0	<b>Dressed Formula Vol:</b> 4,182
Live Steer Avg:	n/a	Steer/Heifer Avg: \$187.25
Live Heifer Avg:	n/a	<b>Dressed Neg. Grid Vol:</b> 1,226
Dressed Steer Avg:	n/a	Steer/Heifer Avg: \$180.27
Dressed Heifer Avg:	n/a	<b>TOTAL VOLUME:</b> 5,408
<a href="#">LM_CT106</a>	<b>TOTAL WK TO DATE VOLUME:</b>	17,388
<b>Committed:</b>	8,924	<b>Delivered:</b> 6,506

<a href="#">LM_CT137</a>	<b>IA-MN</b>	<a href="#">LM_CT109</a>
<b>Neg. Cash Volume:</b>	2,677	<b>Dressed Formula Vol:</b> 3,049
Live Steer Avg:	\$114.00	Steer/Heifer Avg: \$180.76
Live Heifer Avg:	\$112.79	<b>Dressed Neg. Grid Vol:</b> 1,071
Dressed Steer Avg:	\$180.39	Steer/Heifer Avg: \$180.32
Dressed Heifer Avg:	\$180.00	<b>TOTAL VOLUME:</b> 6,797
<a href="#">LM_CT106</a>	<b>TOTAL WK TO DATE VOLUME:</b>	23,625
<b>Committed:</b>	11,256	<b>Delivered:</b> 8,689

For Thursday cash trading in Nebraska was slow on light demand with live unevenly steady at 113.00, and a few dressed steady at 180.00. In the Western Cornbelt cash trading was slow on light to moderate demand with live 1.00 to 2.00 higher from 114.00-115.00, and a few dressed steady at 180.00. Cash trading in the Southern Plains was limited on light demand. The last reported market in the Southern Plains was on Wednesday at 114.00.

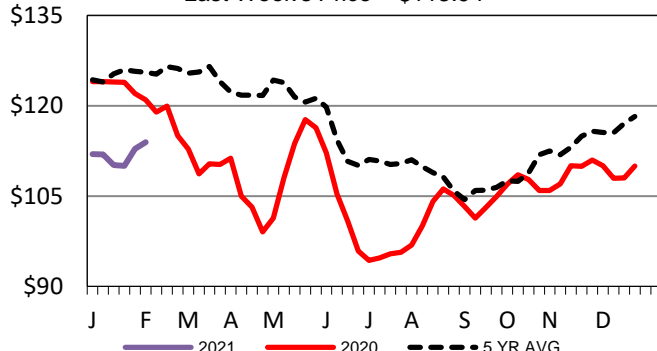
TX-OK-NM Wkly Live Steer Wtd Avg

Last week's price = \$ 113.93



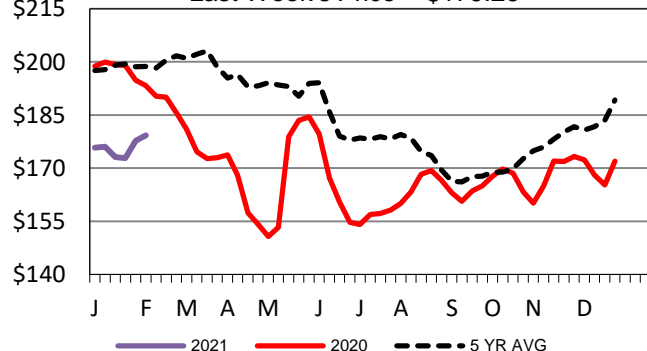
Kansas Weekly Live Steer Weighted Average

Last Week's Price = \$113.94



Nebraska Weekly Dressed Steer Weighted Avg

Last Week's Price = \$179.26



## USDA Livestock, Poultry and Grain Market News

St. Joseph, Missouri

Phone: 816-676-7000

[stjoe.lpgmn@ams.usda.gov](mailto:stjoe.lpgmn@ams.usda.gov)