

Daily Direct Steer and Heifer Slaughter Cattle Summary

For Trade on:

Wednesday, February 10, 2021

LM_CT100	5-AREA	LM_CT109
Neg. Cash Volume:	35,752	Dressed Formula Vol: 28,027
Live Steer Avg:	\$113.71	Steer/Heifer Avg: \$184.70
Live Heifer Avg:	\$113.46	Dressed Neg. Grid Vol: 1,942
Dressed Steer Avg:	\$180.03	Steer/Heifer Avg: \$178.75
Dressed Heifer Avg:	\$180.00	TOTAL VOLUME: 65,721
LM_CT106	TOTAL WK TO DATE VOLUME:	142,505
Committed:	82,235	Delivered: 63,521

LM_CT118	TX-OK-NM	LM_CT109
Neg. Cash Volume:	5,396	Dressed Formula Vol: 4,290
Live Steer Avg:	\$114.00	Steer/Heifer Avg: \$180.84
Live Heifer Avg:	\$114.00	Dressed Neg. Grid Vol: 31
Dressed Steer Avg:	\$0.00	Steer/Heifer Avg: \$180.17
Dressed Heifer Avg:	\$0.00	TOTAL VOLUME: 9,717
LM_CT106	TOTAL WK TO DATE VOLUME:	21,791
Committed:	15,935	Delivered: 15,433

LM_CT121	KANSAS	LM_CT109
Neg. Cash Volume:	7,396	Dressed Formula Vol: 6,856
Live Steer Avg:	\$114.00	Steer/Heifer Avg: \$183.63
Live Heifer Avg:	\$114.00	Dressed Neg. Grid Vol: 0
Dressed Steer Avg:	\$180.00	Steer/Heifer Avg: \$0.00
Dressed Heifer Avg:	\$0.00	TOTAL VOLUME: 14,252
LM_CT106	TOTAL WK TO DATE VOLUME:	52,603
Committed:	22,354	Delivered: 15,989

LM_CT124	NEBRASKA	LM_CT109
Neg. Cash Volume:	14,415	Dressed Formula Vol: 10,932
Live Steer Avg:	\$113.42	Steer/Heifer Avg: \$187.45
Live Heifer Avg:	\$113.46	Dressed Neg. Grid Vol: 842
Dressed Steer Avg:	\$180.09	Steer/Heifer Avg: \$179.66
Dressed Heifer Avg:	\$180.00	TOTAL VOLUME: 26,189
LM_CT106	TOTAL WK TO DATE VOLUME:	39,648
Committed:	22,356	Delivered: 13,989

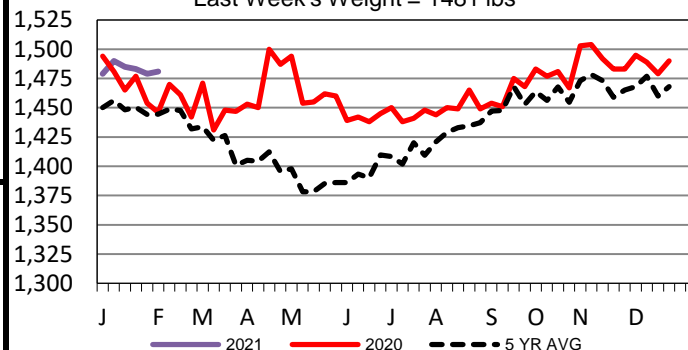
LM_CT134	COLORADO	LM_CT109
Neg. Cash Volume:	0	Dressed Formula Vol: 3,330
Live Steer Avg:	n/a	Steer/Heifer Avg: \$186.28
Live Heifer Avg:	n/a	Dressed Neg. Grid Vol: 232
Dressed Steer Avg:	n/a	Steer/Heifer Avg: \$180.45
Dressed Heifer Avg:	n/a	TOTAL VOLUME: 3,562
LM_CT106	TOTAL WK TO DATE VOLUME:	11,980
Committed:	7,758	Delivered: 9,716

LM_CT137	IA-MN	LM_CT109
Neg. Cash Volume:	8,545	Dressed Formula Vol: 2,657
Live Steer Avg:	\$112.73	Steer/Heifer Avg: \$180.39
Live Heifer Avg:	\$111.94	Dressed Neg. Grid Vol: 964
Dressed Steer Avg:	\$179.91	Steer/Heifer Avg: \$177.87
Dressed Heifer Avg:	\$180.00	TOTAL VOLUME: 12,166
LM_CT106	TOTAL WK TO DATE VOLUME:	16,828
Committed:	13,832	Delivered: 8,394

For Wednesday cash trading was slow on light demand in the Southern Plains with live steady at 114.00. In Nebraska cash trading was light on light to moderate demand with dressed steady to 2.00 higher at 180.00, and a few live from 113.00-114.00. Last week live traded from 112.00-114.00. In the Western Cornbelt cash trading was light on light to moderate demand with dressed steady to 2.00 higher at 180.00, and a few live at 112.00. The last reported live market was last week from 112.00-114.00.

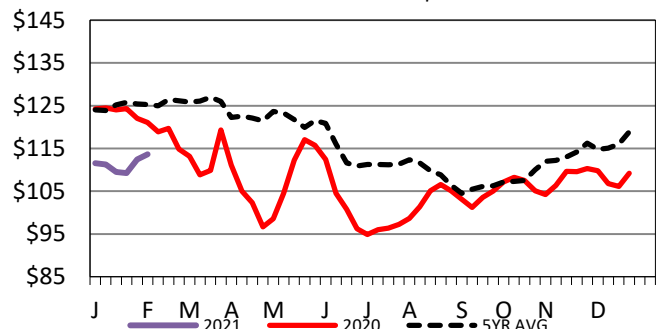
5-Area Negotiated Cash Live Steer Weights

Last Week's Weight = 1481 lbs



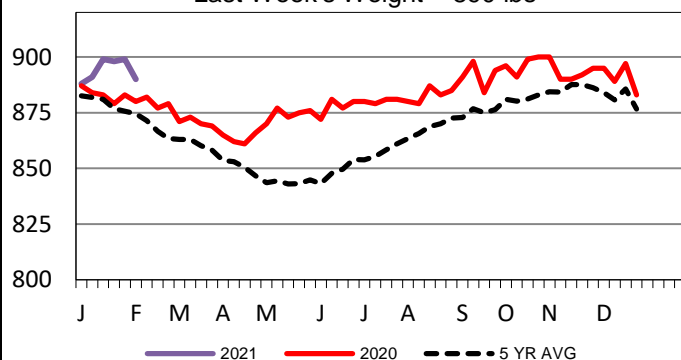
5-Area Live Steer Weighted Average

Last Week's Price = \$113.63



5-Area Formula Carcass Weight

Last Week's Weight = 890 lbs



USDA Livestock, Poultry and Grain Market News

St. Joseph, Missouri

Phone: 816-676-7000

stjoe.lpgmn@ams.usda.gov