

## Daily Direct Steer and Heifer Slaughter Cattle Summary

For Trade on:

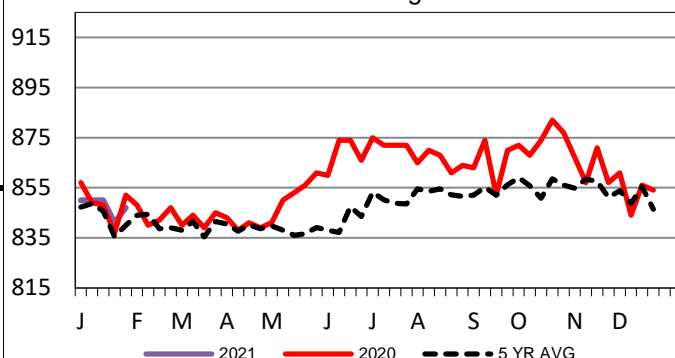
Thursday, February 04, 2021

<a href="#">LM_CT100</a>	<b>5-AREA</b>	<a href="#">LM_CT109</a>
<b>Neg. Cash Volume:</b>	30,170	<b>Dressed Formula Vol:</b> 31,170
<b>Live Steer Avg:</b>	\$113.22	<b>Steer/Heifer Avg:</b> \$180.95
<b>Live Heifer Avg:</b>	\$112.58	<b>Dressed Neg. Grid Vol:</b> 1,713
<b>Dressed Steer Avg:</b>	\$179.29	<b>Steer/Heifer Avg:</b> \$179.62
<b>Dressed Heifer Avg:</b>	\$179.03	<b>TOTAL VOLUME:</b> <b>63,053</b>
<a href="#">LM_CT106</a>	<b>TOTAL WK TO DATE VOLUME:</b>	<b>175,924</b>
<b>Committed:</b>	<b>101,751</b>	<b>Delivered:</b> <b>68,592</b>

For Thursday in Nebraska and Western Cornbelt cash trading was slow to moderate with moderate demand. In Nebraska dressed traded steady to 2.00 higher from 178.00-180.00. For the prior week in Nebraska live trades were from 112.00-113.00. In the Western Cornbelt live traded 1.50 to 2.00 higher from 112.00-114.00 and dressed traded steady to 2.00 higher from 178.00-180.00. For Thursday in the Southern Plains cash trading was inactive on very light demand. Last week in the Southern Plains live purchases traded at 113.00.

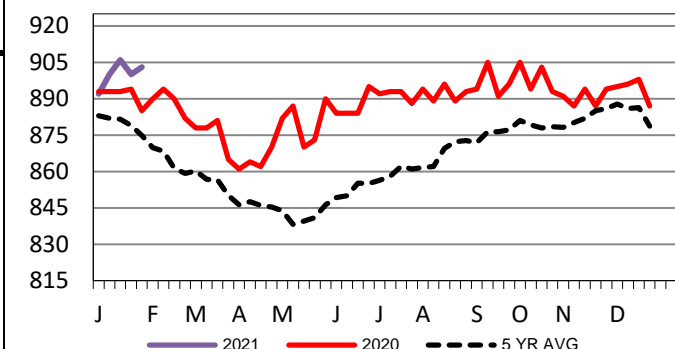
<a href="#">LM_CT118</a>	<b>TX-OK-NM</b>	<a href="#">LM_CT109</a>
<b>Neg. Cash Volume:</b>	175	<b>Dressed Formula Vol:</b> 6,022
<b>Live Steer Avg:</b>	\$0.00	<b>Steer/Heifer Avg:</b> \$177.89
<b>Live Heifer Avg:</b>	\$113.75	<b>Dressed Neg. Grid Vol:</b> 0
<b>Dressed Steer Avg:</b>	\$0.00	<b>Steer/Heifer Avg:</b> \$0.00
<b>Dressed Heifer Avg:</b>	\$0.00	<b>TOTAL VOLUME:</b> <b>6,197</b>
<a href="#">LM_CT106</a>	<b>TOTAL WK TO DATE VOLUME:</b>	<b>25,645</b>
<b>Committed:</b>	<b>21,705</b>	<b>Delivered:</b> <b>16,600</b>

**TX-OK-NM Formula Carcass Weights**  
Last Week's Weight = 847 lbs



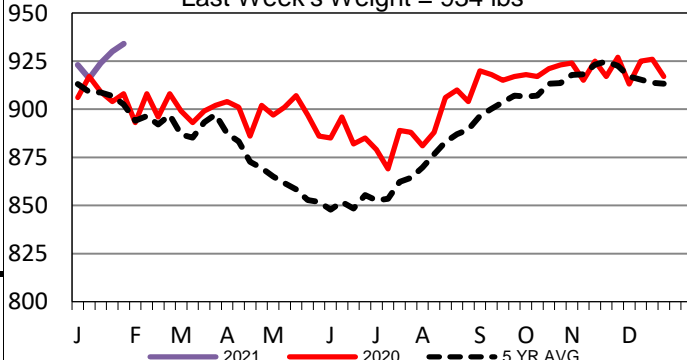
<a href="#">LM_CT121</a>	<b>KANSAS</b>	<a href="#">LM_CT109</a>
<b>Neg. Cash Volume:</b>	385	<b>Dressed Formula Vol:</b> 12,872
<b>Live Steer Avg:</b>	\$113.00	<b>Steer/Heifer Avg:</b> \$180.97
<b>Live Heifer Avg:</b>	\$113.00	<b>Dressed Neg. Grid Vol:</b> 105
<b>Dressed Steer Avg:</b>	\$0.00	<b>Steer/Heifer Avg:</b> \$183.62
<b>Dressed Heifer Avg:</b>	\$0.00	<b>TOTAL VOLUME:</b> <b>13,362</b>
<a href="#">LM_CT106</a>	<b>TOTAL WK TO DATE VOLUME:</b>	<b>57,815</b>
<b>Committed:</b>	<b>10,573</b>	<b>Delivered:</b> <b>17,382</b>

**Kansas Formula Carcass Weights**  
Last Week's Weight = 903 lbs



<a href="#">LM_CT124</a>	<b>NEBRASKA</b>	<a href="#">LM_CT109</a>
<b>Neg. Cash Volume:</b>	13,274	<b>Dressed Formula Vol:</b> 6,225
<b>Live Steer Avg:</b>	\$112.69	<b>Steer/Heifer Avg:</b> \$184.14
<b>Live Heifer Avg:</b>	\$114.00	<b>Dressed Neg. Grid Vol:</b> 843
<b>Dressed Steer Avg:</b>	\$179.32	<b>Steer/Heifer Avg:</b> \$180.45
<b>Dressed Heifer Avg:</b>	\$179.22	<b>TOTAL VOLUME:</b> <b>20,342</b>
<a href="#">LM_CT106</a>	<b>TOTAL WK TO DATE VOLUME:</b>	<b>47,634</b>
<b>Committed:</b>	<b>37,484</b>	<b>Delivered:</b> <b>17,113</b>

**Nebraska Formula Carcass Weights**  
Last Week's Weight = 934 lbs



<a href="#">LM_CT134</a>	<b>COLORADO</b>	<a href="#">LM_CT109</a>
<b>Neg. Cash Volume:</b>	0	<b>Dressed Formula Vol:</b> 2,994
<b>Live Steer Avg:</b>	n/a	<b>Steer/Heifer Avg:</b> \$182.75
<b>Live Heifer Avg:</b>	n/a	<b>Dressed Neg. Grid Vol:</b> 115
<b>Dressed Steer Avg:</b>	n/a	<b>Steer/Heifer Avg:</b> \$179.47
<b>Dressed Heifer Avg:</b>	n/a	<b>TOTAL VOLUME:</b> <b>3,109</b>
<a href="#">LM_CT106</a>	<b>TOTAL WK TO DATE VOLUME:</b>	<b>14,339</b>
<b>Committed:</b>	<b>7,488</b>	<b>Delivered:</b> <b>11,230</b>

<a href="#">LM_CT137</a>	<b>IA-MN</b>	<a href="#">LM_CT109</a>
<b>Neg. Cash Volume:</b>	16,336	<b>Dressed Formula Vol:</b> 3,480
<b>Live Steer Avg:</b>	\$113.30	<b>Steer/Heifer Avg:</b> \$179.80
<b>Live Heifer Avg:</b>	\$112.26	<b>Dressed Neg. Grid Vol:</b> 679
<b>Dressed Steer Avg:</b>	\$179.26	<b>Steer/Heifer Avg:</b> \$177.14
<b>Dressed Heifer Avg:</b>	\$178.75	<b>TOTAL VOLUME:</b> <b>20,495</b>
<a href="#">LM_CT106</a>	<b>TOTAL WK TO DATE VOLUME:</b>	<b>31,305</b>
<b>Committed:</b>	<b>24,501</b>	<b>Delivered:</b> <b>6,267</b>

## USDA Livestock, Poultry and Grain Market News

St. Joseph, Missouri

Phone: 816-676-7000

[stjoe.lpgmn@ams.usda.gov](mailto:stjoe.lpgmn@ams.usda.gov)