

Daily Direct Steer and Heifer Slaughter Cattle Summary

For Trade on:

Wednesday, February 03, 2021

LM_CT100	5-AREA	LM_CT109
Neg. Cash Volume:	2,556	Dressed Formula Vol: 30,871
Live Steer Avg:	\$114.00	Steer/Heifer Avg: \$172.03
Live Heifer Avg:	\$113.15	Dressed Neg. Grid Vol: 1,169
Dressed Steer Avg:	\$178.73	Steer/Heifer Avg: \$178.04
Dressed Heifer Avg:	\$0.00	TOTAL VOLUME: 34,596
LM_CT106	TOTAL WK TO DATE VOLUME:	112,871
Committed:	35,938	Delivered: 65,904

LM_CT118	TX-OK-NM	LM_CT109
Neg. Cash Volume:	355	Dressed Formula Vol: 7,776
Live Steer Avg:	\$0.00	Steer/Heifer Avg: \$179.68
Live Heifer Avg:	\$133.75	Dressed Neg. Grid Vol: 0
Dressed Steer Avg:	\$0.00	Steer/Heifer Avg: \$0.00
Dressed Heifer Avg:	\$0.00	TOTAL VOLUME: 8,131
LM_CT106	TOTAL WK TO DATE VOLUME:	19,448
Committed:	6,599	Delivered: 12,839

LM_CT121	KANSAS	LM_CT109
Neg. Cash Volume:	0	Dressed Formula Vol: 7,997
Live Steer Avg:	\$0.00	Steer/Heifer Avg: \$181.91
Live Heifer Avg:	\$0.00	Dressed Neg. Grid Vol: 11
Dressed Steer Avg:	\$0.00	Steer/Heifer Avg: \$178.38
Dressed Heifer Avg:	\$0.00	TOTAL VOLUME: 8,008
LM_CT106	TOTAL WK TO DATE VOLUME:	44,453
Committed:	11,255	Delivered: 19,211

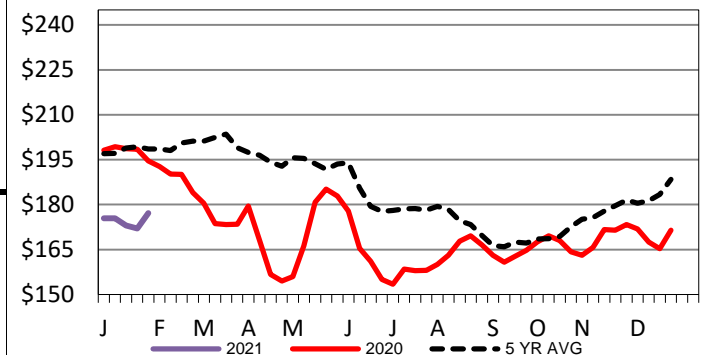
LM_CT124	NEBRASKA	LM_CT109
Neg. Cash Volume:	43	Dressed Formula Vol: 9,266
Live Steer Avg:	\$0.00	Steer/Heifer Avg: \$182.82
Live Heifer Avg:	\$0.00	Dressed Neg. Grid Vol: 509
Dressed Steer Avg:	\$180.00	Steer/Heifer Avg: \$178.23
Dressed Heifer Avg:	\$0.00	TOTAL VOLUME: 9,818
LM_CT106	TOTAL WK TO DATE VOLUME:	27,292
Committed:	10,279	Delivered: 17,265

LM_CT134	COLORADO	LM_CT109
Neg. Cash Volume:	0	Dressed Formula Vol: 3,307
Live Steer Avg:	n/a	Steer/Heifer Avg: \$187.64
Live Heifer Avg:	n/a	Dressed Neg. Grid Vol: 544
Dressed Steer Avg:	n/a	Steer/Heifer Avg: \$178.25
Dressed Heifer Avg:	n/a	TOTAL VOLUME: 3,851
LM_CT106	TOTAL WK TO DATE VOLUME:	11,230
Committed:	2,408	Delivered: 6,677

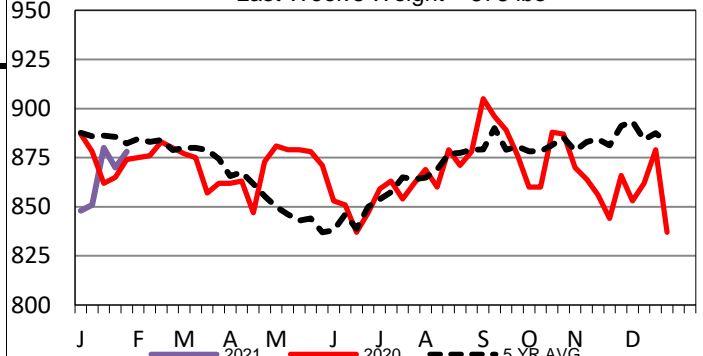
LM_CT137	IA-MN	LM_CT109
Neg. Cash Volume:	2,158	Dressed Formula Vol: 2,582
Live Steer Avg:	\$114.00	Steer/Heifer Avg: \$179.36
Live Heifer Avg:	\$112.70	Dressed Neg. Grid Vol: 168
Dressed Steer Avg:	\$179.71	Steer/Heifer Avg: \$173.29
Dressed Heifer Avg:	\$0.00	TOTAL VOLUME: 4,908
LM_CT106	TOTAL WK TO DATE VOLUME:	10,810
Committed:	5,397	Delivered: 9,912

For Wednesday negotiated cash trading was at a standstill in Kansas. In the Texas Panhandle, Nebraska and Western Cornbelt negotiated cash trading was mostly inactive on very light demand. Not enough trades for a market trend. Last week in the Southern Plains live purchases traded at 113.00. For the prior week in Nebraska live and dressed trades were from 112.00-113.00 and 178.00, respectively. For the previous week in the Western Cornbelt live purchases traded from 110.00-112.50 and dressed mostly at 178.00.

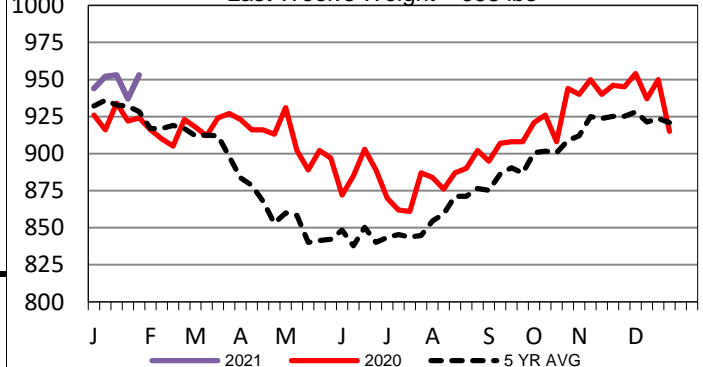
Iowa-Minnesota Wkly Dressed Steer Wtd Avg
Last Week's Price= \$177.17



Colorado Formula Carcass Weights
Last Week's Weight = 878 lbs



Iowa-Minnesota Formula Carcass Weights
Last Week's Weight = 953 lbs



USDA Livestock, Poultry and Grain Market News

St. Joseph, Missouri

Phone: 816-676-7000

stjoe.lpgmn@ams.usda.gov