

Daily Direct Steer and Heifer Slaughter Cattle Summary

For Trade on:

Monday, February 01, 2021

<a href="#">LM_CT100</a>	<b>5-AREA</b>	<a href="#">LM_CT109</a>
Neg. Cash Volume:	39	Dressed Formula Vol: 42,588
Live Steer Avg:	\$0.00	Steer/Heifer Avg: \$176.55
Live Heifer Avg:	\$0.00	Dressed Neg. Grid Vol: 3,661
Dressed Steer Avg:	\$0.00	Steer/Heifer Avg: \$176.38
Dressed Heifer Avg:	\$0.00	<b>TOTAL VOLUME: 46,288</b>
<a href="#">LM_CT106</a>	<b>TOTAL WK TO DATE VOLUME: 46,288</b>	
Committed:	71,768	Delivered: 75,793

<a href="#">LM_CT118</a>	<b>TX-OK-NM</b>	<a href="#">LM_CT109</a>
Neg. Cash Volume:	0	Dressed Formula Vol: 7,552
Live Steer Avg:	\$0.00	Steer/Heifer Avg: \$177.11
Live Heifer Avg:	\$0.00	Dressed Neg. Grid Vol: 40
Dressed Steer Avg:	\$0.00	Steer/Heifer Avg: \$167.49
Dressed Heifer Avg:	\$0.00	<b>TOTAL VOLUME: 7,592</b>
<a href="#">LM_CT106</a>	<b>TOTAL WK TO DATE VOLUME: 7,592</b>	
Committed:	29,055	Delivered: 20,583

<a href="#">LM_CT121</a>	<b>KANSAS</b>	<a href="#">LM_CT109</a>
Neg. Cash Volume:	0	Dressed Formula Vol: 21,907
Live Steer Avg:	\$0.00	Steer/Heifer Avg: \$176.31
Live Heifer Avg:	\$0.00	Dressed Neg. Grid Vol: 1,113
Dressed Steer Avg:	\$0.00	Steer/Heifer Avg: \$175.52
Dressed Heifer Avg:	\$0.00	<b>TOTAL VOLUME: 23,020</b>
<a href="#">LM_CT106</a>	<b>TOTAL WK TO DATE VOLUME: 23,020</b>	
Committed:	12,611	Delivered: 20,172

<a href="#">LM_CT124</a>	<b>NEBRASKA</b>	<a href="#">LM_CT109</a>
Neg. Cash Volume:	0	Dressed Formula Vol: 8,624
Live Steer Avg:	\$0.00	Steer/Heifer Avg: \$177.01
Live Heifer Avg:	\$0.00	Dressed Neg. Grid Vol: 1,712
Dressed Steer Avg:	\$0.00	Steer/Heifer Avg: \$176.51
Dressed Heifer Avg:	\$0.00	<b>TOTAL VOLUME: 10,336</b>
<a href="#">LM_CT106</a>	<b>TOTAL WK TO DATE VOLUME: 10,336</b>	
Committed:	13,469	Delivered: 17,531

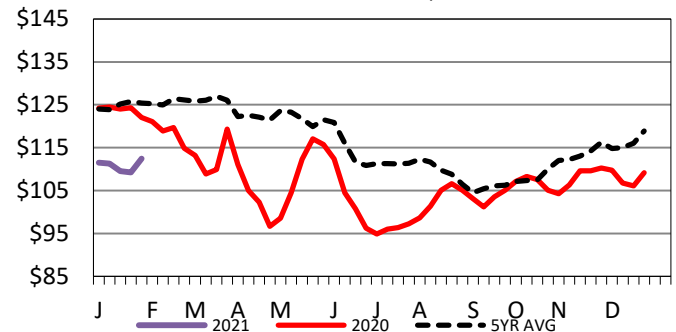
<a href="#">LM_CT134</a>	<b>COLORADO</b>	<a href="#">LM_CT109</a>
Neg. Cash Volume:	n/a	Dressed Formula Vol: 2,323
Live Steer Avg:	n/a	Steer/Heifer Avg: \$177.35
Live Heifer Avg:	n/a	Dressed Neg. Grid Vol: 354
Dressed Steer Avg:	n/a	Steer/Heifer Avg: \$181.71
Dressed Heifer Avg:	n/a	<b>TOTAL VOLUME: #####</b>
<a href="#">LM_CT106</a>	<b>TOTAL WK TO DATE VOLUME: 2,677</b>	
Committed:	7,280	Delivered: 9,002

<a href="#">LM_CT137</a>	<b>IA-MN</b>	<a href="#">LM_CT109</a>
Neg. Cash Volume:	39	Dressed Formula Vol: 2,296
Live Steer Avg:	\$0.00	Steer/Heifer Avg: \$174.58
Live Heifer Avg:	\$0.00	Dressed Neg. Grid Vol: 442
Dressed Steer Avg:	\$0.00	Steer/Heifer Avg: \$174.61
Dressed Heifer Avg:	\$0.00	<b>TOTAL VOLUME: 2,777</b>
<a href="#">LM_CT106</a>	<b>TOTAL WK TO DATE VOLUME: 2,777</b>	
Committed:	9,353	Delivered: 8,505

For Monday negotiated cash trading was at a standstill in the Southern and Nebraska. In the Western Cornbelt negotiated cash trading was mostly inactive with very light demand. Not enough trades for a market trend. Last week in the Southern Plains live purchases traded at 113.00. For the prior week in Nebraska live and dressed trades were from 112.00-113.00 and 178.00, respectively. For the previous week in the Western Cornbelt live purchases traded from 110.00-112.50 and dressed mostly at 178.00.

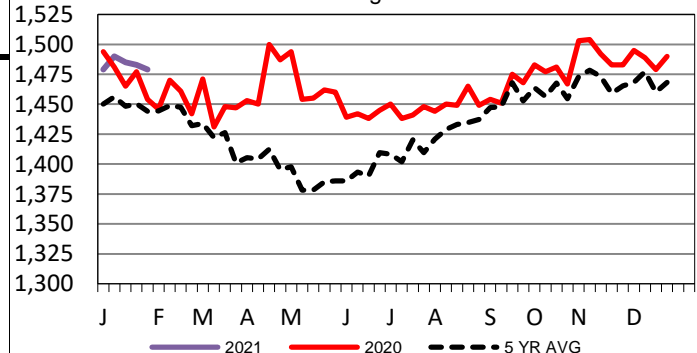
5-Area Live Steer Weighted Average

Last Week's Price = \$112.44



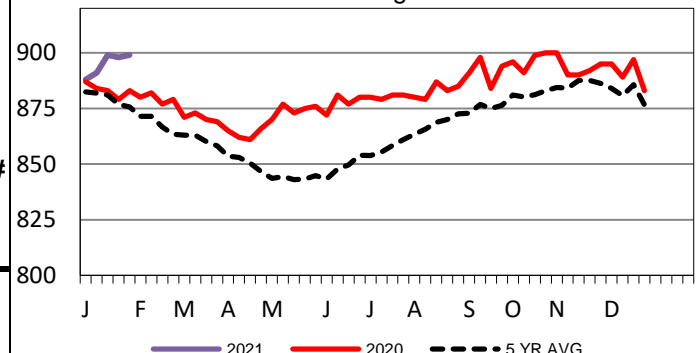
5-Area Negotiated Cash Live Steer Weights

Last Week's Weight = 1479 lbs



5-Area Formula Carcass Weight

Last Week's Weight = 899 lbs



USDA Livestock, Poultry and Grain Market News

St. Joseph, Missouri

Phone: 816-676-7000

[stjoe.lpgmn@ams.usda.gov](mailto:stjoe.lpgmn@ams.usda.gov)