

Daily Direct Steer and Heifer Slaughter Cattle Summary

For Trade on:

Thursday, January 28, 2021

LM_CT100	5-AREA	LM_CT109
Neg. Cash Volume:	10,807	Dressed Formula Vol: 27,772
Live Steer Avg:	\$111.68	Steer/Heifer Avg: \$176.68
Live Heifer Avg:	\$111.66	Dressed Neg. Grid Vol: 1,330
Dressed Steer Avg:	\$176.03	Steer/Heifer Avg: \$176.74
Dressed Heifer Avg:	\$176.02	TOTAL VOLUME: 39,909
LM_CT106	TOTAL WK TO DATE VOLUME:	158,022
Committed:	63,513	Delivered: 69,117

LM_CT118	TX-OK-NM	LM_CT109
Neg. Cash Volume:	106	Dressed Formula Vol: 5,358
Live Steer Avg:	\$0.00	Steer/Heifer Avg: \$175.05
Live Heifer Avg:	\$0.00	Dressed Neg. Grid Vol: 0
Dressed Steer Avg:	\$0.00	Steer/Heifer Avg: \$0.00
Dressed Heifer Avg:	\$0.00	TOTAL VOLUME: 5,464
LM_CT106	TOTAL WK TO DATE VOLUME:	30,135
Committed:	22,708	Delivered: 12,337

LM_CT121	KANSAS	LM_CT109
Neg. Cash Volume:	1,325	Dressed Formula Vol: 12,129
Live Steer Avg:	\$111.69	Steer/Heifer Avg: \$176.68
Live Heifer Avg:	\$111.56	Dressed Neg. Grid Vol: 0
Dressed Steer Avg:	\$0.00	Steer/Heifer Avg: \$0.00
Dressed Heifer Avg:	\$0.00	TOTAL VOLUME: 13,454
LM_CT106	TOTAL WK TO DATE VOLUME:	57,829
Committed:	12,045	Delivered: 24,008

LM_CT124	NEBRASKA	LM_CT109
Neg. Cash Volume:	1,900	Dressed Formula Vol: 5,523
Live Steer Avg:	\$110.32	Steer/Heifer Avg: \$178.98
Live Heifer Avg:	\$0.00	Dressed Neg. Grid Vol: 293
Dressed Steer Avg:	\$176.25	Steer/Heifer Avg: \$176.38
Dressed Heifer Avg:	\$176.29	TOTAL VOLUME: 7,716
LM_CT106	TOTAL WK TO DATE VOLUME:	30,607
Committed:	14,751	Delivered: 17,605

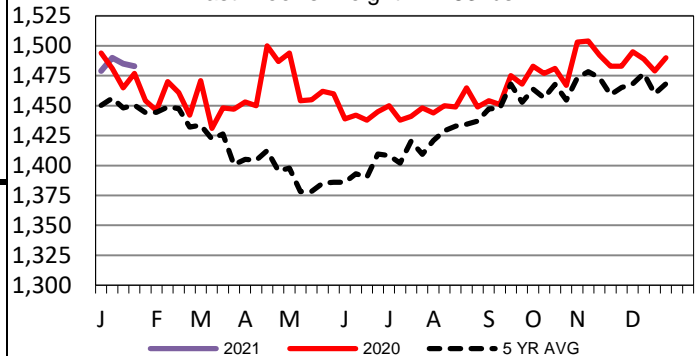
LM_CT134	COLORADO	LM_CT109
Neg. Cash Volume:	0	Dressed Formula Vol: 2,544
Live Steer Avg:	\$0.00	Steer/Heifer Avg: \$176.04
Live Heifer Avg:	\$0.00	Dressed Neg. Grid Vol: 578
Dressed Steer Avg:	\$0.00	Steer/Heifer Avg: \$178.64
Dressed Heifer Avg:	\$0.00	TOTAL VOLUME: 3,122
LM_CT106	TOTAL WK TO DATE VOLUME:	14,238
Committed:	4,174	Delivered: 7,290

LM_CT137	IA-MN	LM_CT109
Neg. Cash Volume:	7,476	Dressed Formula Vol: 2,594
Live Steer Avg:	\$111.85	Steer/Heifer Avg: \$176.47
Live Heifer Avg:	\$111.68	Dressed Neg. Grid Vol: 497
Dressed Steer Avg:	\$175.57	Steer/Heifer Avg: \$175.32
Dressed Heifer Avg:	\$175.81	TOTAL VOLUME: 10,567
LM_CT106	TOTAL WK TO DATE VOLUME:	25,580
Committed:	9,835	Delivered: 7,877

Thursday cash trading in the Western Cornbelt was slow with moderate demand. Compared to last week live traded 2.00-7.00 higher at 112.00. Last week dressed traded from 170.00-173.00. In Kansas and Nebraska cash trading was limited with light demand. In Kansas a few live traded at 112.00. In the Texas Panhandle and Colorado cash trading was at a standstill. Last week in the in Texas Panhandle live traded from 110.00-111.00. In Kansas live traded at 110.00. For the prior week in the Northern Plains live traded from 109.00-110.00 and dressed, in Nebraska, traded at 173.00.

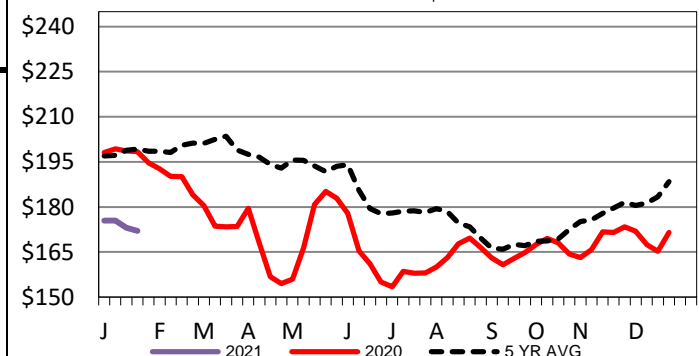
5-Area Negotiated Cash Live Steer Weights

Last Week's Weight = 1483 lbs



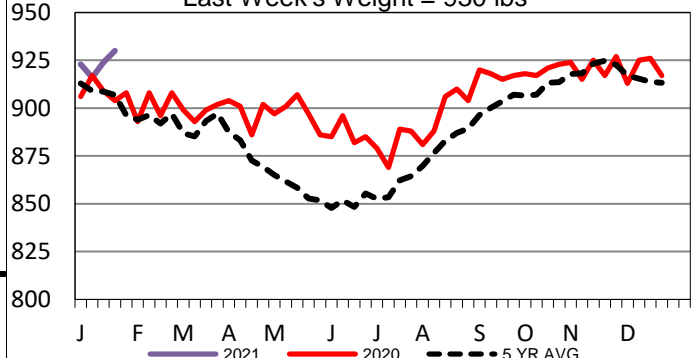
Iowa-Minnesota Wkly Dressed Steer Wtd Avg

Last Week's Price = \$172.03



Nebraska Formula Carcass Weights

Last Week's Weight = 930 lbs



USDA Livestock, Poultry and Grain Market News

St. Joseph, Missouri

Phone: 816-676-7000

stjoe.lpgmn@ams.usda.gov