

Daily Direct Steer and Heifer Slaughter Cattle Summary

For Trade on:

Tuesday, January 26, 2021

LM_CT100	5-AREA	LM_CT109
Neg. Cash Volume:	2,570	Dressed Formula Vol: 31,311
Live Steer Avg:	\$110.80	Steer/Heifer Avg: \$179.55
Live Heifer Avg:	\$112.13	Dressed Neg. Grid Vol: 3,232
Dressed Steer Avg:	\$0.00	Steer/Heifer Avg: \$178.17
Dressed Heifer Avg:	\$173.00	TOTAL VOLUME: 37,113
LM_CT106	TOTAL WK TO DATE VOLUME:	86,048
Committed:	67,332	Delivered: 71,046

LM_CT118	TX-OK-NM	LM_CT109
Neg. Cash Volume:	1,187	Dressed Formula Vol: 7,100
Live Steer Avg:	\$112.55	Steer/Heifer Avg: \$176.80
Live Heifer Avg:	\$112.55	Dressed Neg. Grid Vol: 76
Dressed Steer Avg:	\$0.00	Steer/Heifer Avg: \$173.36
Dressed Heifer Avg:	\$0.00	TOTAL VOLUME: 8,363
LM_CT106	TOTAL WK TO DATE VOLUME:	18,579
Committed:	7,008	Delivered: 14,947

LM_CT121	KANSAS	LM_CT109
Neg. Cash Volume:	0	Dressed Formula Vol: 12,476
Live Steer Avg:	\$0.00	Steer/Heifer Avg: \$176.33
Live Heifer Avg:	\$0.00	Dressed Neg. Grid Vol: 0
Dressed Steer Avg:	\$0.00	Steer/Heifer Avg: \$0.00
Dressed Heifer Avg:	\$0.00	TOTAL VOLUME: 12,476
LM_CT106	TOTAL WK TO DATE VOLUME:	34,376
Committed:	23,637	Delivered: 21,281

LM_CT124	NEBRASKA	LM_CT109
Neg. Cash Volume:	0	Dressed Formula Vol: 5,182
Live Steer Avg:	\$0.00	Steer/Heifer Avg: \$180.42
Live Heifer Avg:	\$0.00	Dressed Neg. Grid Vol: 1,724
Dressed Steer Avg:	\$0.00	Steer/Heifer Avg: \$178.27
Dressed Heifer Avg:	\$0.00	TOTAL VOLUME: 6,906
LM_CT106	TOTAL WK TO DATE VOLUME:	14,277
Committed:	19,711	Delivered: 15,376

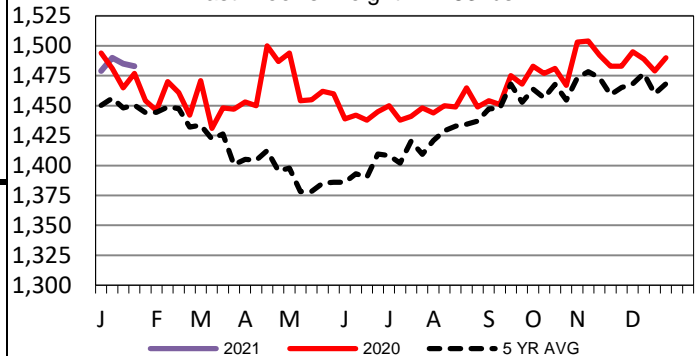
LM_CT134	COLORADO	LM_CT109
Neg. Cash Volume:	0	Dressed Formula Vol: 3,831
Live Steer Avg:	\$0.00	Steer/Heifer Avg: \$196.36
Live Heifer Avg:	\$0.00	Dressed Neg. Grid Vol: 446
Dressed Steer Avg:	\$0.00	Steer/Heifer Avg: \$176.18
Dressed Heifer Avg:	\$0.00	TOTAL VOLUME: 4,277
LM_CT106	TOTAL WK TO DATE VOLUME:	8,343
Committed:	7,999	Delivered: 6,799

LM_CT137	IA-MN	LM_CT109
Neg. Cash Volume:	1,028	Dressed Formula Vol: 2,722
Live Steer Avg:	\$110.00	Steer/Heifer Avg: \$176.19
Live Heifer Avg:	\$0.00	Dressed Neg. Grid Vol: 1,022
Dressed Steer Avg:	\$0.00	Steer/Heifer Avg: \$179.27
Dressed Heifer Avg:	\$0.00	TOTAL VOLUME: 4,772
LM_CT106	TOTAL WK TO DATE VOLUME:	10,642
Committed:	8,977	Delivered: 12,643

For Tuesday cash trading was at a standstill in the Kansas and Northern Plains. In the Texas and Western Cornbelt cash trading was limited on light demand. In Texas a few live traded at 112.55 and in the Western Cornbelt a few live traded at 110.00. Last week in the in Texas Panhandle live traded from 110.00-111.00. In Kansas live traded at 110.00. Last week in the Northern Plains live traded from 109.00-110.00 and dressed, in Nebraska, traded at 173.00. For the previous week in the Western Cornbelt live and dressed traded from 105.00-110.00 and from 170.00-173.00, respectively.

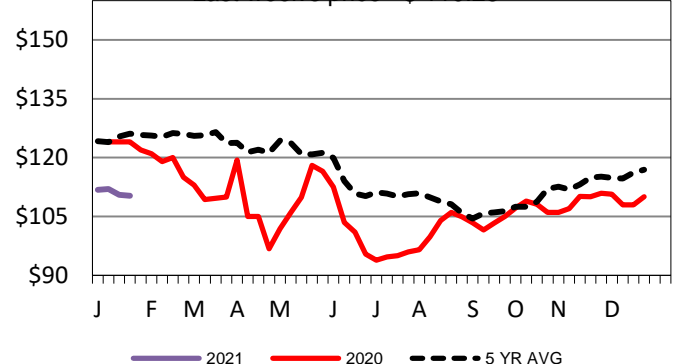
5-Area Negotiated Cash Live Steer Weights

Last Week's Weight = 1483 lbs



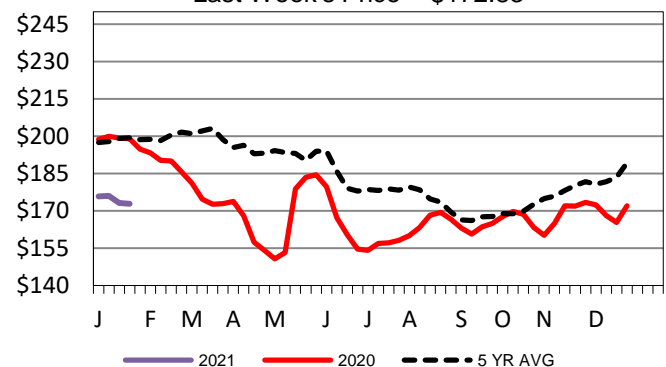
TX-OK-NM Wkly Live Steer Wtd Avg

Last week's price = \$ 110.28



Nebraska Weekly Dressed Steer Weighted Avg

Last Week's Price = \$172.83



USDA Livestock, Poultry and Grain Market News

St. Joseph, Missouri

Phone: 816-676-7000

stjoe.lpgmn@ams.usda.gov