

## Daily Direct Steer and Heifer Slaughter Cattle Summary

For Trade on:

Thursday, January 14, 2021

<a href="#">LM_CT100</a>	<b>5-AREA</b>	<a href="#">LM_CT109</a>
<b>Neg. Cash Volume:</b>	7,970	<b>Dressed Formula Vol:</b> 33,859
Live Steer Avg:	\$106.35	Steer/Heifer Avg: \$180.03
Live Heifer Avg:	\$108.54	<b>Dressed Neg. Grid Vol:</b> 2,264
Dressed Steer Avg:	\$172.53	Steer/Heifer Avg: \$177.72
Dressed Heifer Avg:	\$172.22	<b>TOTAL VOLUME:</b> 44,093
<a href="#">LM_CT106</a>	<b>TOTAL WK TO DATE VOLUME:</b>	226,048
<b>Committed:</b>	66,307	<b>Delivered:</b> 66,625

<a href="#">LM_CT118</a>	<b>TX-OK-NM</b>	<a href="#">LM_CT109</a>
<b>Neg. Cash Volume:</b>	37	<b>Dressed Formula Vol:</b> 6,377
Live Steer Avg:	\$0.00	Steer/Heifer Avg: \$178.10
Live Heifer Avg:	\$0.00	<b>Dressed Neg. Grid Vol:</b> 0
Dressed Steer Avg:	\$0.00	Steer/Heifer Avg: \$0.00
Dressed Heifer Avg:	\$0.00	<b>TOTAL VOLUME:</b> 6,414
<a href="#">LM_CT106</a>	<b>TOTAL WK TO DATE VOLUME:</b>	37,417
<b>Committed:</b>	6,053	<b>Delivered:</b> 16,442

<a href="#">LM_CT121</a>	<b>KANSAS</b>	<a href="#">LM_CT109</a>
<b>Neg. Cash Volume:</b>	166	<b>Dressed Formula Vol:</b> 11,501
Live Steer Avg:	\$0.00	Steer/Heifer Avg: \$180.45
Live Heifer Avg:	\$109.00	<b>Dressed Neg. Grid Vol:</b> 0
Dressed Steer Avg:	\$0.00	Steer/Heifer Avg: \$0.00
Dressed Heifer Avg:	\$0.00	<b>TOTAL VOLUME:</b> 11,667
<a href="#">LM_CT106</a>	<b>TOTAL WK TO DATE VOLUME:</b>	65,169
<b>Committed:</b>	27,589	<b>Delivered:</b> 17,536

<a href="#">LM_CT124</a>	<b>NEBRASKA</b>	<a href="#">LM_CT109</a>
<b>Neg. Cash Volume:</b>	1,786	<b>Dressed Formula Vol:</b> 11,614
Live Steer Avg:	\$0.00	Steer/Heifer Avg: \$180.78
Live Heifer Avg:	\$0.00	<b>Dressed Neg. Grid Vol:</b> 384
Dressed Steer Avg:	\$172.06	Steer/Heifer Avg: \$176.91
Dressed Heifer Avg:	\$172.00	<b>TOTAL VOLUME:</b> 13,784
<a href="#">LM_CT106</a>	<b>TOTAL WK TO DATE VOLUME:</b>	58,578
<b>Committed:</b>	22,247	<b>Delivered:</b> 18,326

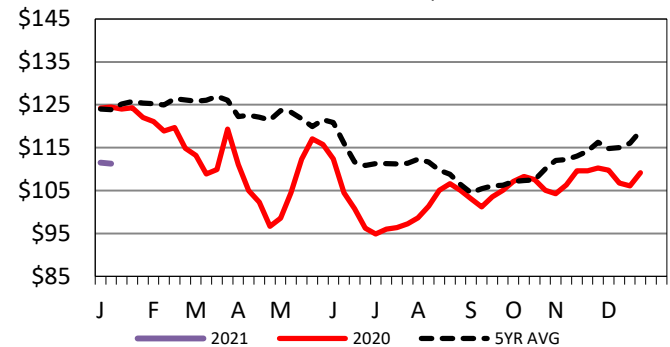
<a href="#">LM_CT134</a>	<b>COLORADO</b>	<a href="#">LM_CT109</a>
<b>Neg. Cash Volume:</b>	0	<b>Dressed Formula Vol:</b> 1,815
Live Steer Avg:	\$0.00	Steer/Heifer Avg: \$181.53
Live Heifer Avg:	\$0.00	<b>Dressed Neg. Grid Vol:</b> 724
Dressed Steer Avg:	\$0.00	Steer/Heifer Avg: \$176.40
Dressed Heifer Avg:	\$0.00	<b>TOTAL VOLUME:</b> 2,539
<a href="#">LM_CT106</a>	<b>TOTAL WK TO DATE VOLUME:</b>	20,987
<b>Committed:</b>	934	<b>Delivered:</b> 7,877

<a href="#">LM_CT137</a>	<b>IA-MN</b>	<a href="#">LM_CT109</a>
<b>Neg. Cash Volume:</b>	1,933	<b>Dressed Formula Vol:</b> 2,746
Live Steer Avg:	\$106.35	Steer/Heifer Avg: \$178.96
Live Heifer Avg:	\$108.00	<b>Dressed Neg. Grid Vol:</b> 1,156
Dressed Steer Avg:	\$172.69	Steer/Heifer Avg: \$178.81
Dressed Heifer Avg:	\$173.00	<b>TOTAL VOLUME:</b> 5,835
<a href="#">LM_CT106</a>	<b>TOTAL WK TO DATE VOLUME:</b>	40,801
<b>Committed:</b>	9,484	<b>Delivered:</b> 6,444

Thursday cash trading was limited on light demand in the Southern Plains, Nebraska, and the Western Cornbelt, and at a standstill in Colorado. The last market in the Southern Plains was on Wednesday with live from 110.00-111.00 in the Texas Panhandle and from 109.00-111.00 in Kansas. In Nebraska on Tuesday, live traded from 109.00-110.00 and dressed traded at 172.00 on Wednesday. In Colorado, the last market was on Wednesday with live at 109.00. The last market in the Western Cornbelt was on Tuesday with live from 108.00-109.00 and dressed 173.00-174.00.

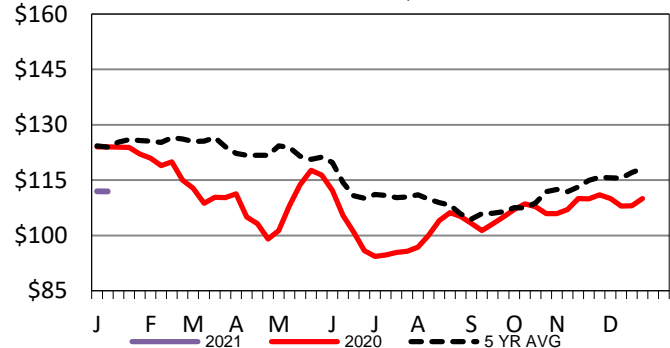
## 5-Area Live Steer Weighted Average

Last Week's Price = \$111.27



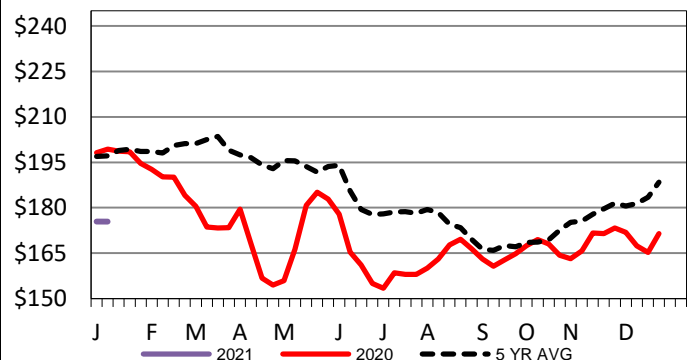
## Kansas Weekly Live Steer Weighted Average

Last Week's Price = \$111.92



## Iowa-Minnesota Wkly Dressed Steer Wtd Avg

Last Week's Price = \$175.42



## USDA Livestock, Poultry and Grain Market News

St. Joseph, Missouri

Phone: 816-676-7000

[stjoe.lpgmn@ams.usda.gov](mailto:stjoe.lpgmn@ams.usda.gov)