

Daily Direct Steer and Heifer Slaughter Cattle Summary

For Trade on:

Wednesday, January 13, 2021

LM_CT100	5-AREA	LM_CT109
Neg. Cash Volume:	33,380	Dressed Formula Vol: 25,107
Live Steer Avg:	\$109.74	Steer/Heifer Avg: \$180.94
Live Heifer Avg:	\$109.82	Dressed Neg. Grid Vol: 1,952
Dressed Steer Avg:	\$172.51	Steer/Heifer Avg: \$176.95
Dressed Heifer Avg:	\$172.13	TOTAL VOLUME: 60,439
LM_CT106	TOTAL WK TO DATE VOLUME:	181,955
Committed:	100,704	Delivered: 72,592

LM_CT118	TX-OK-NM	LM_CT109
Neg. Cash Volume:	4,845	Dressed Formula Vol: 6,051
Live Steer Avg:	\$110.29	Steer/Heifer Avg: \$178.20
Live Heifer Avg:	\$110.31	Dressed Neg. Grid Vol: 0
Dressed Steer Avg:	\$0.00	Steer/Heifer Avg: \$0.00
Dressed Heifer Avg:	\$0.00	TOTAL VOLUME: 10,896
LM_CT106	TOTAL WK TO DATE VOLUME:	31,003
Committed:	32,563	Delivered: 15,441

LM_CT121	KANSAS	LM_CT109
Neg. Cash Volume:	11,958	Dressed Formula Vol: 8,825
Live Steer Avg:	\$110.16	Steer/Heifer Avg: \$180.01
Live Heifer Avg:	\$110.05	Dressed Neg. Grid Vol: 0
Dressed Steer Avg:	\$172.00	Steer/Heifer Avg: \$0.00
Dressed Heifer Avg:	\$172.00	TOTAL VOLUME: 20,783
LM_CT106	TOTAL WK TO DATE VOLUME:	53,502
Committed:	27,278	Delivered: 20,780

LM_CT124	NEBRASKA	LM_CT109
Neg. Cash Volume:	6,207	Dressed Formula Vol: 4,242
Live Steer Avg:	\$109.00	Steer/Heifer Avg: \$184.26
Live Heifer Avg:	\$109.00	Dressed Neg. Grid Vol: 694
Dressed Steer Avg:	\$172.25	Steer/Heifer Avg: \$176.60
Dressed Heifer Avg:	\$172.12	TOTAL VOLUME: 11,143
LM_CT106	TOTAL WK TO DATE VOLUME:	44,794
Committed:	17,741	Delivered: 19,410

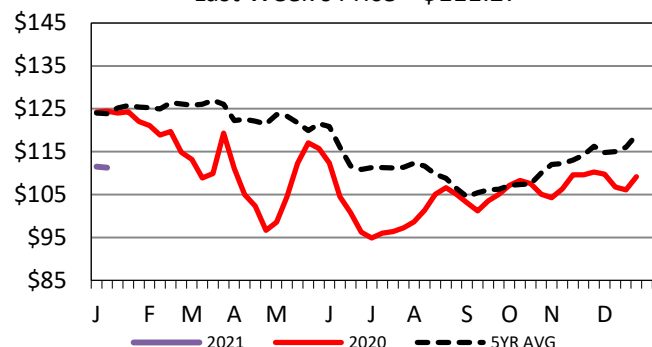
LM_CT134	COLORADO	LM_CT109
Neg. Cash Volume:	3,016	Dressed Formula Vol: 3,272
Live Steer Avg:	\$109.00	Steer/Heifer Avg: \$185.71
Live Heifer Avg:	\$109.00	Dressed Neg. Grid Vol: 1,011
Dressed Steer Avg:	\$0.00	Steer/Heifer Avg: \$177.36
Dressed Heifer Avg:	\$0.00	TOTAL VOLUME: 7,299
LM_CT106	TOTAL WK TO DATE VOLUME:	18,448
Committed:	11,606	Delivered: 7,780

LM_CT137	IA-MN	LM_CT109
Neg. Cash Volume:	7,354	Dressed Formula Vol: 2,834
Live Steer Avg:	\$108.57	Steer/Heifer Avg: \$179.16
Live Heifer Avg:	\$108.07	Dressed Neg. Grid Vol: 363
Dressed Steer Avg:	\$172.77	Steer/Heifer Avg: \$176.84
Dressed Heifer Avg:	\$173.00	TOTAL VOLUME: 10,551
LM_CT106	TOTAL WK TO DATE VOLUME:	34,966
Committed:	11,516	Delivered: 9,181

Wednesday cash trading in Texas was slow on light demand with live steady to 1.00 lower from 110.00-111.00. In Kansas cash trading and demand were light to moderate with live 1.00-3.00 lower from 109.00-111.00. Cash trading in Nebraska was slow on light demand with dressed 1.00-2.00 lower at 172.00. The last live market was on Tuesday from 109.00-110.00. In Colorado cash trading and demand were light to moderate with live purchases steady at 109.00. Cash trading in the Western Cornbelt was slow on light demand. The last market on Tuesday with live 108.00-109.00, dressed 173.00-174.00.

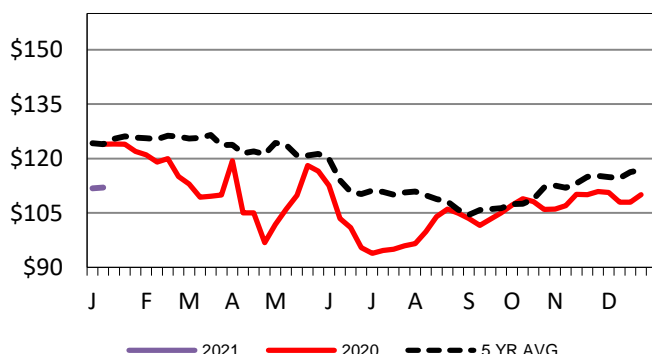
5-Area Live Steer Weighted Average

Last Week's Price = \$111.27



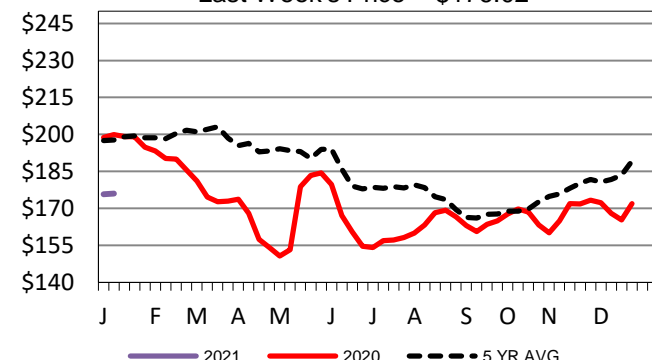
TX-OK-NM Wkly Live Steer Wtd Avg

Last week's price = \$112.00



Nebraska Weekly Dressed Steer Weighted Avg

Last Week's Price = \$176.02



USDA Livestock, Poultry and Grain Market News

St. Joseph, Missouri

Phone: 816-676-7000

stjoe.lpgmn@ams.usda.gov