

Daily Direct Steer and Heifer Slaughter Cattle Summary

For Trade on:

Tuesday, January 12, 2021

LM_CT100	5-AREA	LM_CT109
Neg. Cash Volume:	41,089	Dressed Formula Vol: 27,594
Live Steer Avg:	\$109.24	Steer/Heifer Avg: \$181.42
Live Heifer Avg:	\$109.01	Dressed Neg. Grid Vol: 3,478
Dressed Steer Avg:	\$173.38	Steer/Heifer Avg: \$177.69
Dressed Heifer Avg:	\$173.28	TOTAL VOLUME: 72,161
LM_CT106	TOTAL WK TO DATE VOLUME:	121,516
Committed:	97,083	Delivered: 62,567

LM_CT118	TX-OK-NM	LM_CT109
Neg. Cash Volume:	2,434	Dressed Formula Vol: 9,070
Live Steer Avg:	\$111.00	Steer/Heifer Avg: \$179.99
Live Heifer Avg:	\$111.02	Dressed Neg. Grid Vol: 0
Dressed Steer Avg:	\$0.00	Steer/Heifer Avg: \$0.00
Dressed Heifer Avg:	\$0.00	TOTAL VOLUME: 11,504
LM_CT106	TOTAL WK TO DATE VOLUME:	20,107
Committed:	9,491	Delivered: 14,837

LM_CT121	KANSAS	LM_CT109
Neg. Cash Volume:	281	Dressed Formula Vol: 6,869
Live Steer Avg:	\$110.00	Steer/Heifer Avg: \$179.69
Live Heifer Avg:	\$0.00	Dressed Neg. Grid Vol: 39
Dressed Steer Avg:	\$0.00	Steer/Heifer Avg: \$173.34
Dressed Heifer Avg:	\$0.00	TOTAL VOLUME: 7,189
LM_CT106	TOTAL WK TO DATE VOLUME:	32,719
Committed:	26,658	Delivered: 18,174

LM_CT124	NEBRASKA	LM_CT109
Neg. Cash Volume:	19,337	Dressed Formula Vol: 4,974
Live Steer Avg:	\$108.99	Steer/Heifer Avg: \$181.91
Live Heifer Avg:	\$109.00	Dressed Neg. Grid Vol: 2,333
Dressed Steer Avg:	\$173.48	Steer/Heifer Avg: \$178.67
Dressed Heifer Avg:	\$173.41	TOTAL VOLUME: 26,644
LM_CT106	TOTAL WK TO DATE VOLUME:	33,651
Committed:	31,195	Delivered: 14,924

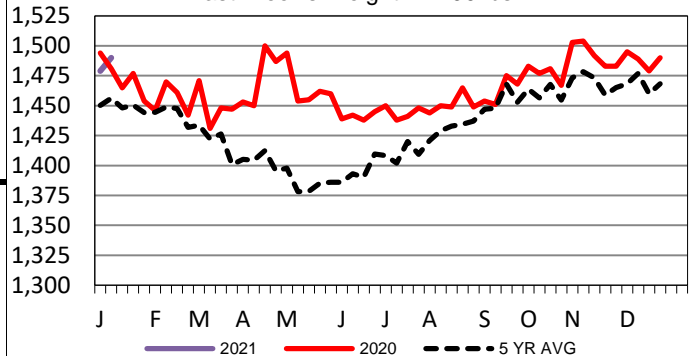
LM_CT134	COLORADO	LM_CT109
Neg. Cash Volume:	2,469	Dressed Formula Vol: 4,541
Live Steer Avg:	\$109.00	Steer/Heifer Avg: \$188.51
Live Heifer Avg:	\$109.00	Dressed Neg. Grid Vol: 305
Dressed Steer Avg:	\$0.00	Steer/Heifer Avg: \$171.96
Dressed Heifer Avg:	\$0.00	TOTAL VOLUME: 7,315
LM_CT106	TOTAL WK TO DATE VOLUME:	11,149
Committed:	9,947	Delivered: 6,949

LM_CT137	IA-MN	LM_CT109
Neg. Cash Volume:	16,568	Dressed Formula Vol: 2,174
Live Steer Avg:	\$108.68	Steer/Heifer Avg: \$177.02
Live Heifer Avg:	\$108.18	Dressed Neg. Grid Vol: 838
Dressed Steer Avg:	\$173.27	Steer/Heifer Avg: \$177.46
Dressed Heifer Avg:	\$173.13	TOTAL VOLUME: 19,580
LM_CT106	TOTAL WK TO DATE VOLUME:	24,415
Committed:	19,792	Delivered: 7,683

Tuesday cash trading in the Texas was slow on light demand with live 1.00 lower at 111.00. In Kansas, cash trading was limited on light demand. Last week live traded at 112.00. In Nebraska cash trading was light to moderate on good demand with live 1.00 lower from 109.00-110.00 and dressed 2.00-3.00 lower from 173.00-174.00. In Colorado, cash trading was light on light to moderate demand live 3.00 lower at 109.00. In the Western Cornbelt, cash trading and demand were light to moderate with live 1.00-2.00 lower from 108.00-109.00 and dressed 1.00-3.00 lower from 173.00-174.00.

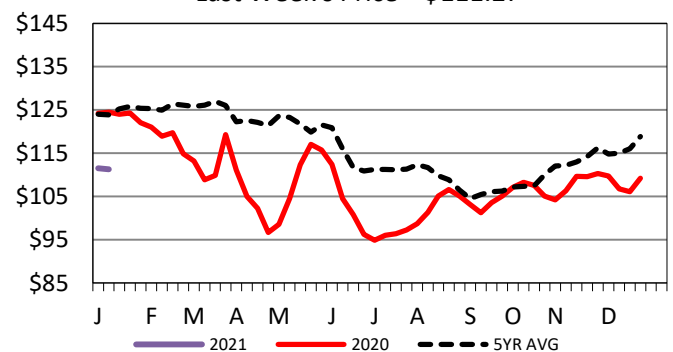
5-Area Negotiated Cash Live Steer Weights

Last Week's Weight = 1490 lbs



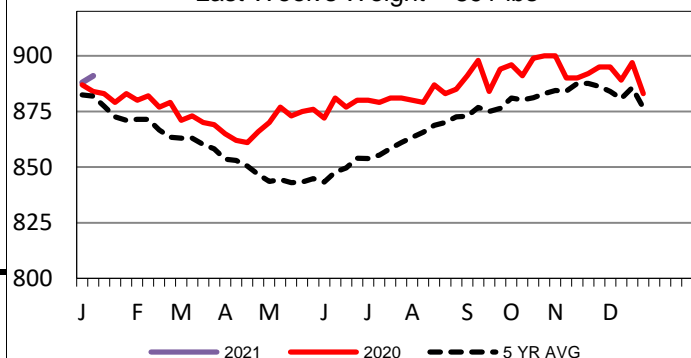
5-Area Live Steer Weighted Average

Last Week's Price = \$111.27



5-Area Formula Carcass Weight

Last Week's Weight = 891 lbs



USDA Livestock, Poultry and Grain Market News

St. Joseph, Missouri

Phone: 816-676-7000

stjoe.lpgmn@ams.usda.gov