

## Daily Direct Steer and Heifer Slaughter Cattle Summary

For Trade on:

Tuesday, December 08, 2020

<a href="#">LM_CT100</a>	<b>5-AREA</b>	<a href="#">LM_CT109</a>
<b>Neg. Cash Volume:</b>	17,987	<b>Dressed Formula Vol:</b> 22,210
Live Steer Avg:	\$107.97	Steer/Heifer Avg: \$179.13
Live Heifer Avg:	\$107.81	<b>Dressed Neg. Grid Vol:</b> 2,315
Dressed Steer Avg:	\$68.72	Steer/Heifer Avg: \$177.35
Dressed Heifer Avg:	\$168.27	<b>TOTAL VOLUME:</b> 42,512
<a href="#">LM_CT106</a>	<b>TOTAL WK TO DATE VOLUME:</b>	<b>93,250</b>
<b>Committed:</b>	<b>86,280</b>	<b>Delivered:</b> 64,904

<a href="#">LM_CT118</a>	<b>TX-OK-NM</b>	<a href="#">LM_CT109</a>
<b>Neg. Cash Volume:</b>	4,650	<b>Dressed Formula Vol:</b> 5,242
Live Steer Avg:	\$108.00	Steer/Heifer Avg: \$178.77
Live Heifer Avg:	\$108.00	<b>Dressed Neg. Grid Vol:</b> 100
Dressed Steer Avg:	\$0.00	Steer/Heifer Avg: \$171.57
Dressed Heifer Avg:	\$0.00	<b>TOTAL VOLUME:</b> 9,992
<a href="#">LM_CT106</a>	<b>TOTAL WK TO DATE VOLUME:</b>	<b>22,671</b>
<b>Committed:</b>	<b>19,789</b>	<b>Delivered:</b> 12,723

<a href="#">LM_CT121</a>	<b>KANSAS</b>	<a href="#">LM_CT109</a>
<b>Neg. Cash Volume:</b>	9,655	<b>Dressed Formula Vol:</b> 7,612
Live Steer Avg:	\$107.98	Steer/Heifer Avg: \$178.11
Live Heifer Avg:	\$107.74	<b>Dressed Neg. Grid Vol:</b> 100
Dressed Steer Avg:	\$170.00	Steer/Heifer Avg: \$175.92
Dressed Heifer Avg:	\$0.00	<b>TOTAL VOLUME:</b> 17,367
<a href="#">LM_CT106</a>	<b>TOTAL WK TO DATE VOLUME:</b>	<b>40,306</b>
<b>Committed:</b>	<b>28,177</b>	<b>Delivered:</b> 18,667

<a href="#">LM_CT124</a>	<b>NEBRASKA</b>	<a href="#">LM_CT109</a>
<b>Neg. Cash Volume:</b>	1,194	<b>Dressed Formula Vol:</b> 4,665
Live Steer Avg:	\$107.00	Steer/Heifer Avg: \$184.46
Live Heifer Avg:	\$107.00	<b>Dressed Neg. Grid Vol:</b> 1,250
Dressed Steer Avg:	\$168.00	Steer/Heifer Avg: \$177.92
Dressed Heifer Avg:	\$170.00	<b>TOTAL VOLUME:</b> 7,109
<a href="#">LM_CT106</a>	<b>TOTAL WK TO DATE VOLUME:</b>	<b>13,924</b>
<b>Committed:</b>	<b>26,698</b>	<b>Delivered:</b> 15,033

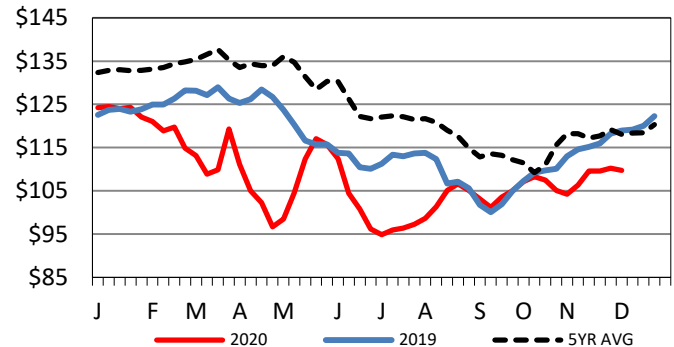
<a href="#">LM_CT134</a>	<b>COLORADO</b>	<a href="#">LM_CT109</a>
<b>Neg. Cash Volume:</b>	0	<b>Dressed Formula Vol:</b> 3,220
Live Steer Avg:	n/a	Steer/Heifer Avg: \$177.22
Live Heifer Avg:	n/a	<b>Dressed Neg. Grid Vol:</b> 253
Dressed Steer Avg:	n/a	Steer/Heifer Avg: \$180.43
Dressed Heifer Avg:	n/a	<b>TOTAL VOLUME:</b> 3,473
<a href="#">LM_CT106</a>	<b>TOTAL WK TO DATE VOLUME:</b>	<b>8,702</b>
<b>Committed:</b>	<b>3,908</b>	<b>Delivered:</b> 6,068

<a href="#">LM_CT137</a>	<b>IA-MN</b>	<a href="#">LM_CT109</a>
<b>Neg. Cash Volume:</b>	2,488	<b>Dressed Formula Vol:</b> 1,571
Live Steer Avg:	\$0.00	Steer/Heifer Avg: \$173.14
Live Heifer Avg:	\$0.00	<b>Dressed Neg. Grid Vol:</b> 612
Dressed Steer Avg:	\$168.72	Steer/Heifer Avg: \$176.07
Dressed Heifer Avg:	\$168.00	<b>TOTAL VOLUME:</b> 4,671
<a href="#">LM_CT106</a>	<b>TOTAL WK TO DATE VOLUME:</b>	<b>8,020</b>
<b>Committed:</b>	<b>7,708</b>	<b>Delivered:</b> 12,413

For Tuesday negotiated cash trading was slow on light demand in the Southern Plains. In the Texas Panhandle, live traded 2.00-4.00 lower at 108.00. In Kansas, live traded 2.00 lower at 108.00. For Tuesday in Nebraska and Western Cornbelt negotiated cash trading was limited on light demand. A few dressed, in the Western Cornbelt, traded at 168.00. Last week, in Nebraska, live traded at 110.00 and dressed traded from 172.00-174.00. For the previous week in the Western Cornbelt live traded from 109.00-110.00 and dressed traded at 172.00.

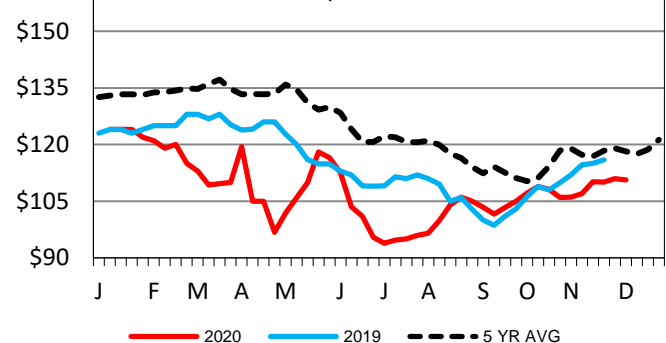
## 5-Area Live Steer Weighted Average

Last Week's Price = \$109.75



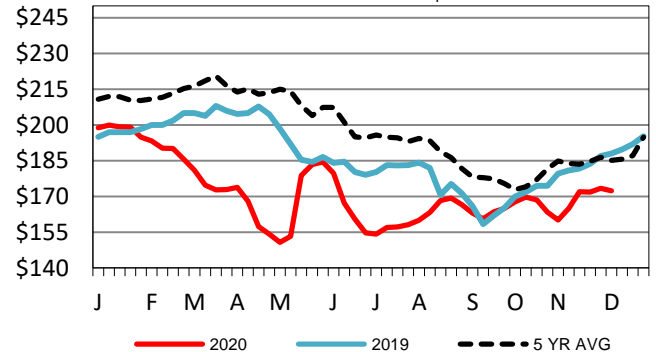
## TX-OK-NM Wkly Live Steer Wtd Avg

Last week's price = \$110.67



## Nebraska Weekly DressedSteer Weighted Avg

Last Week's Price = \$172.36



## USDA Livestock, Poultry and Grain Market News

St. Joseph, Missouri

Phone: 816-676-7000

[stjoe.lpgmn@ams.usda.gov](mailto:stjoe.lpgmn@ams.usda.gov)