

## Daily Direct Steer and Heifer Slaughter Cattle Summary

For Trade on:

Monday, December 07, 2020

<a href="#">LM_CT100</a>	<b>5-AREA</b>	<a href="#">LM_CT109</a>
<b>Neg. Cash Volume:</b>	2,351	<b>Dressed Formula Vol:</b> 34,108
<b>Live Steer Avg:</b>	\$107.74	<b>Steer/Heifer Avg:</b> \$177.43
<b>Live Heifer Avg:</b>	\$109.75	<b>Dressed Neg. Grid Vol:</b> 2,203
<b>Dressed Steer Avg:</b>	\$0.00	<b>Steer/Heifer Avg:</b> \$172.75
<b>Dressed Heifer Avg:</b>	\$170.00	<b>TOTAL VOLUME:</b> <b>38,662</b>
<a href="#">LM_CT106</a>	<b>TOTAL WK TO DATE VOLUME:</b>	<b>212,269</b>
<b>Committed:</b>	<b>115,564</b>	<b>Delivered:</b> <b>105,943</b>

<a href="#">LM_CT118</a>	<b>TX-OK-NM</b>	<a href="#">LM_CT109</a>
<b>Neg. Cash Volume:</b>	433	<b>Dressed Formula Vol:</b> 7,523
<b>Live Steer Avg:</b>	\$109.00	<b>Steer/Heifer Avg:</b> \$175.75
<b>Live Heifer Avg:</b>	\$0.00	<b>Dressed Neg. Grid Vol:</b> 0
<b>Dressed Steer Avg:</b>	\$0.00	<b>Steer/Heifer Avg:</b> \$0.00
<b>Dressed Heifer Avg:</b>	\$0.00	<b>TOTAL VOLUME:</b> <b>7,956</b>
<a href="#">LM_CT106</a>	<b>TOTAL WK TO DATE VOLUME:</b>	<b>43,891</b>
<b>Committed:</b>	<b>34,086</b>	<b>Delivered:</b> <b>23,509</b>

<a href="#">LM_CT121</a>	<b>KANSAS</b>	<a href="#">LM_CT109</a>
<b>Neg. Cash Volume:</b>	0	<b>Dressed Formula Vol:</b> 13,751
<b>Live Steer Avg:</b>	\$0.00	<b>Steer/Heifer Avg:</b> \$178.89
<b>Live Heifer Avg:</b>	\$0.00	<b>Dressed Neg. Grid Vol:</b> 0
<b>Dressed Steer Avg:</b>	\$0.00	<b>Steer/Heifer Avg:</b> \$0.00
<b>Dressed Heifer Avg:</b>	\$0.00	<b>TOTAL VOLUME:</b> <b>13,751</b>
<a href="#">LM_CT106</a>	<b>TOTAL WK TO DATE VOLUME:</b>	<b>57,950</b>
<b>Committed:</b>	<b>27,672</b>	<b>Delivered:</b> <b>27,894</b>

<a href="#">LM_CT124</a>	<b>NEBRASKA</b>	<a href="#">LM_CT109</a>
<b>Neg. Cash Volume:</b>	1,589	<b>Dressed Formula Vol:</b> 8,481
<b>Live Steer Avg:</b>	\$110.00	<b>Steer/Heifer Avg:</b> \$177.22
<b>Live Heifer Avg:</b>	\$0.00	<b>Dressed Neg. Grid Vol:</b> 896
<b>Dressed Steer Avg:</b>	\$0.00	<b>Steer/Heifer Avg:</b> \$176.96
<b>Dressed Heifer Avg:</b>	\$0.00	<b>TOTAL VOLUME:</b> <b>10,966</b>
<a href="#">LM_CT106</a>	<b>TOTAL WK TO DATE VOLUME:</b>	<b>63,843</b>
<b>Committed:</b>	<b>28,736</b>	<b>Delivered:</b> <b>29,502</b>

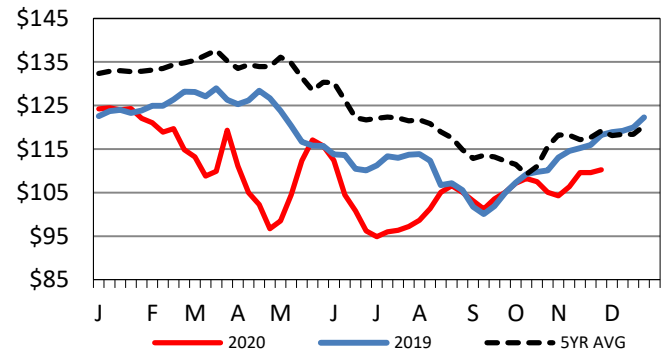
<a href="#">LM_CT134</a>	<b>COLORADO</b>	<a href="#">LM_CT109</a>
<b>Neg. Cash Volume:</b>	0	<b>Dressed Formula Vol:</b> 904
<b>Live Steer Avg:</b>	n/a	<b>Steer/Heifer Avg:</b> \$179.83
<b>Live Heifer Avg:</b>	n/a	<b>Dressed Neg. Grid Vol:</b> 90
<b>Dressed Steer Avg:</b>	n/a	<b>Steer/Heifer Avg:</b> \$177.14
<b>Dressed Heifer Avg:</b>	n/a	<b>TOTAL VOLUME:</b> <b>994</b>
<a href="#">LM_CT106</a>	<b>TOTAL WK TO DATE VOLUME:</b>	<b>9,801</b>
<b>Committed:</b>	<b>8,880</b>	<b>Delivered:</b> <b>5,750</b>

<a href="#">LM_CT137</a>	<b>IA-MN</b>	<a href="#">LM_CT109</a>
<b>Neg. Cash Volume:</b>	329	<b>Dressed Formula Vol:</b> 3,523
<b>Live Steer Avg:</b>	\$107.00	<b>Steer/Heifer Avg:</b> \$175.23
<b>Live Heifer Avg:</b>	\$109.75	<b>Dressed Neg. Grid Vol:</b> 1,217
<b>Dressed Steer Avg:</b>	\$0.00	<b>Steer/Heifer Avg:</b> \$169.35
<b>Dressed Heifer Avg:</b>	\$170.00	<b>TOTAL VOLUME:</b> <b>5,069</b>
<a href="#">LM_CT106</a>	<b>TOTAL WK TO DATE VOLUME:</b>	<b>37,523</b>
<b>Committed:</b>	<b>16,190</b>	<b>Delivered:</b> <b>19,288</b>

For Friday negotiated cash trading was mostly inactive on light demand in all major feeding regions. Not enough purchases in any region for a full market trend. The last reported market in the Texas panhandle was on Wednesday with live purchases from 110.00-112.00. In Kansas, the last reported market was on Thursday with live purchases at 110.00. In Nebraska on Thursday, live and dressed purchases traded from 109.00-110.00 and 172.00-174.00 respectfully. In the Western Cornbelt on Wednesday live and dressed purchases traded at 109.00 and 172.00 respectfully.

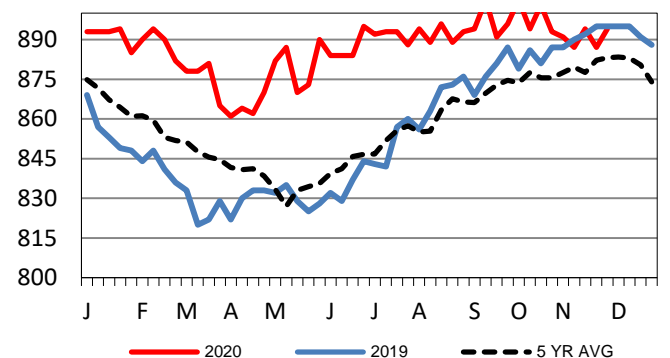
## 5-Area Live Steer Weighted Average

Last Week's Price = \$110.27



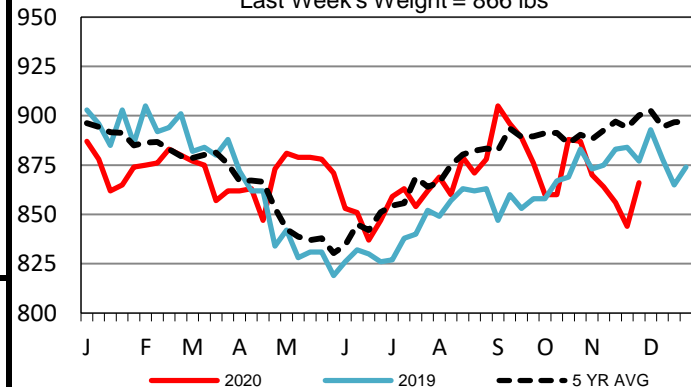
## Kansas Formula Carcass Weights

Last Week's Weight = 894 lbs



## Colorado Formula Carcass Weights

Last Week's Weight = 866 lbs



## USDA Livestock, Poultry and Grain Market News

St. Joseph, Missouri

Phone: 816-676-7000

[stjoe.lpgmn@ams.usda.gov](mailto:stjoe.lpgmn@ams.usda.gov)