

Daily Direct Steer and Heifer Slaughter Cattle Summary

For Trade on:

Thursday, December 03, 2020

LM_CT100	5-AREA	LM_CT109
Neg. Cash Volume:	19,944	Dressed Formula Vol: 29,317
Live Steer Avg:	\$109.71	Steer/Heifer Avg: \$178.09
Live Heifer Avg:	\$109.94	Dressed Neg. Grid Vol: 2,284
Dressed Steer Avg:	\$172.12	Steer/Heifer Avg: \$175.24
Dressed Heifer Avg:	\$172.55	TOTAL VOLUME: 51,545
LM_CT106	TOTAL WK TO DATE VOLUME:	212,269
Committed:	64,246	Delivered: 58,176

LM_CT118	TX-OK-NM	LM_CT109
Neg. Cash Volume:	2,281	Dressed Formula Vol: 11,103
Live Steer Avg:	\$110.00	Steer/Heifer Avg: \$178.47
Live Heifer Avg:	\$110.00	Dressed Neg. Grid Vol: 0
Dressed Steer Avg:	\$0.00	Steer/Heifer Avg: \$0.00
Dressed Heifer Avg:	\$0.00	TOTAL VOLUME: 13,384
LM_CT106	TOTAL WK TO DATE VOLUME:	43,891
Committed:	16,481	Delivered: 16,740

LM_CT121	KANSAS	LM_CT109
Neg. Cash Volume:	6,797	Dressed Formula Vol: 10,763
Live Steer Avg:	\$109.95	Steer/Heifer Avg: \$177.96
Live Heifer Avg:	\$110.00	Dressed Neg. Grid Vol: 0
Dressed Steer Avg:	\$172.00	Steer/Heifer Avg: \$0.00
Dressed Heifer Avg:	\$0.00	TOTAL VOLUME: 17,560
LM_CT106	TOTAL WK TO DATE VOLUME:	57,950
Committed:	19,511	Delivered: 15,748

LM_CT124	NEBRASKA	LM_CT109
Neg. Cash Volume:	8,234	Dressed Formula Vol: 4,225
Live Steer Avg:	\$109.84	Steer/Heifer Avg: \$177.02
Live Heifer Avg:	\$109.90	Dressed Neg. Grid Vol: 1,016
Dressed Steer Avg:	\$172.21	Steer/Heifer Avg: \$174.94
Dressed Heifer Avg:	\$172.25	TOTAL VOLUME: 13,475
LM_CT106	TOTAL WK TO DATE VOLUME:	63,843
Committed:	18,349	Delivered: 15,943

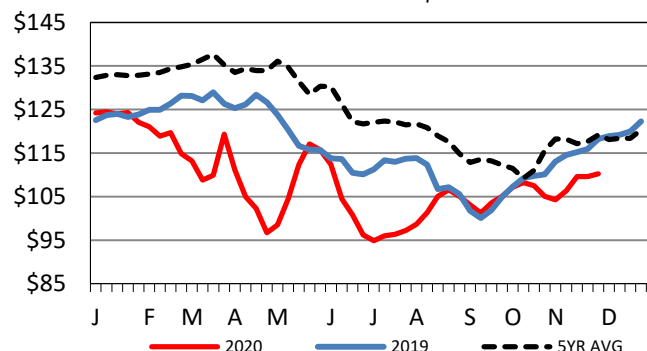
LM_CT134	COLORADO	LM_CT109
Neg. Cash Volume:	0	Dressed Formula Vol: 1,284
Live Steer Avg:	n/a	Steer/Heifer Avg: \$181.97
Live Heifer Avg:	n/a	Dressed Neg. Grid Vol: 508
Dressed Steer Avg:	n/a	Steer/Heifer Avg: \$176.59
Dressed Heifer Avg:	n/a	TOTAL VOLUME: 1,792
LM_CT106	TOTAL WK TO DATE VOLUME:	9,801
Committed:	4,183	Delivered: 74

LM_CT137	IA-MN	LM_CT109
Neg. Cash Volume:	2,632	Dressed Formula Vol: 2,160
Live Steer Avg:	\$108.22	Steer/Heifer Avg: \$176.44
Live Heifer Avg:	\$109.00	Dressed Neg. Grid Vol: 799
Dressed Steer Avg:	\$172.00	Steer/Heifer Avg: \$174.79
Dressed Heifer Avg:	\$173.79	TOTAL VOLUME: 5,591
LM_CT106	TOTAL WK TO DATE VOLUME:	37,523
Committed:	5,722	Delivered: 9,671

Thursday negotiated cash trading in Texas was slow on light demand with a few live at 110.00. The latest reported market was on Wednesday with live from 110.00-112.00. Negotiated cash trading in Kansas was slow on light demand with live 1.00 lower compared to last week at 110.00. In Nebraska, negotiated cash trading was slow on light demand with live and dressed steady compared to Wednesday from 109-110 and 172-174. Negotiated cash trading in the Western Cornbelt was limited on light demand. Wednesday saw live at 109.00 and dressed at 172.00.

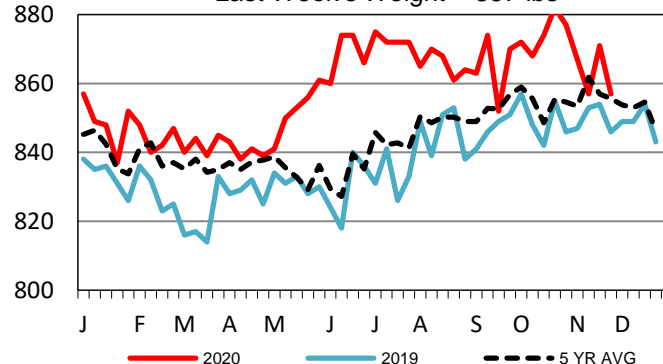
5-Area Live Steer Weighted Average

Last Week's Price = \$110.27



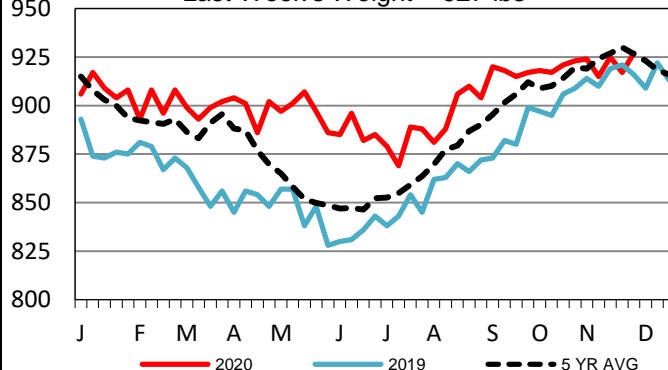
TX-OK-NM Formula Carcass Weights

Last Week's Weight = 857 lbs



Nebraska Formula Carcass Weights

Last Week's Weight = 927 lbs



USDA Livestock, Poultry and Grain Market News

St. Joseph, Missouri

Phone: 816-676-7000

stjoe.lpgmn@ams.usda.gov