

## Daily Direct Steer and Heifer Slaughter Cattle Summary

For Trade on:

Thursday, November 12, 2020

<a href="#">LM_CT100</a>	<b>5-AREA</b>	<a href="#">LM_CT109</a>
<b>Neg. Cash Volume:</b>	58,519	<b>Dressed Formula Vol:</b> 36,665
Live Steer Avg:	\$109.50	Steer/Heifer Avg: \$172.61
Live Heifer Avg:	\$109.43	<b>Dressed Neg. Grid Vol:</b> 1,153
Dressed Steer Avg:	\$171.87	Steer/Heifer Avg: \$169.84
Dressed Heifer Avg:	\$171.90	<b>TOTAL VOLUME:</b> 96,337
<a href="#">LM_CT106</a>	<b>TOTAL WK TO DATE VOLUME:</b>	<b>204,501</b>
<b>Committed:</b>	<b>103,635</b>	<b>Delivered:</b> 63,061

<a href="#">LM_CT118</a>	<b>TX-OK-NM</b>	<a href="#">LM_CT109</a>
<b>Neg. Cash Volume:</b>	684	<b>Dressed Formula Vol:</b> 8,361
Live Steer Avg:	\$110.91	Steer/Heifer Avg: \$172.09
Live Heifer Avg:	\$0.00	<b>Dressed Neg. Grid Vol:</b> 0
Dressed Steer Avg:	\$0.00	Steer/Heifer Avg: \$0.00
Dressed Heifer Avg:	\$0.00	<b>TOTAL VOLUME:</b> 9,045
<a href="#">LM_CT106</a>	<b>TOTAL WK TO DATE VOLUME:</b>	<b>35,905</b>
<b>Committed:</b>	<b>26,425</b>	<b>Delivered:</b> 15,981

<a href="#">LM_CT121</a>	<b>KANSAS</b>	<a href="#">LM_CT109</a>
<b>Neg. Cash Volume:</b>	3,006	<b>Dressed Formula Vol:</b> 10,871
Live Steer Avg:	\$110.00	Steer/Heifer Avg: \$173.14
Live Heifer Avg:	\$110.51	<b>Dressed Neg. Grid Vol:</b> 52
Dressed Steer Avg:	\$172.80	Steer/Heifer Avg: \$154.27
Dressed Heifer Avg:	\$172.00	<b>TOTAL VOLUME:</b> 13,929
<a href="#">LM_CT106</a>	<b>TOTAL WK TO DATE VOLUME:</b>	<b>54,420</b>
<b>Committed:</b>	<b>18,212</b>	<b>Delivered:</b> 16,393

<a href="#">LM_CT124</a>	<b>NEBRASKA</b>	<a href="#">LM_CT109</a>
<b>Neg. Cash Volume:</b>	27,511	<b>Dressed Formula Vol:</b> 11,218
Live Steer Avg:	\$109.80	Steer/Heifer Avg: \$170.39
Live Heifer Avg:	\$109.71	<b>Dressed Neg. Grid Vol:</b> 236
Dressed Steer Avg:	\$171.97	Steer/Heifer Avg: \$171.11
Dressed Heifer Avg:	\$172.00	<b>TOTAL VOLUME:</b> 38,965
<a href="#">LM_CT106</a>	<b>TOTAL WK TO DATE VOLUME:</b>	<b>58,951</b>
<b>Committed:</b>	<b>23,516</b>	<b>Delivered:</b> 12,389

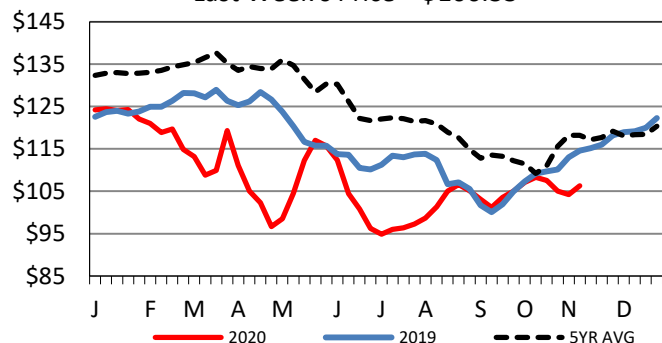
<a href="#">LM_CT134</a>	<b>COLORADO</b>	<a href="#">LM_CT109</a>
<b>Neg. Cash Volume:</b>	0	<b>Dressed Formula Vol:</b> 4,050
Live Steer Avg:	n/a	Steer/Heifer Avg: \$181.77
Live Heifer Avg:	n/a	<b>Dressed Neg. Grid Vol:</b> 429
Dressed Steer Avg:	n/a	Steer/Heifer Avg: \$171.14
Dressed Heifer Avg:	n/a	<b>TOTAL VOLUME:</b> 4,479
<a href="#">LM_CT106</a>	<b>TOTAL WK TO DATE VOLUME:</b>	<b>15,069</b>
<b>Committed:</b>	<b>11,299</b>	<b>Delivered:</b> 7,798

<a href="#">LM_CT137</a>	<b>IA-MN</b>	<a href="#">LM_CT109</a>
<b>Neg. Cash Volume:</b>	27,258	<b>Dressed Formula Vol:</b> 2,472
Live Steer Avg:	\$109.07	Steer/Heifer Avg: \$167.09
Live Heifer Avg:	\$109.07	<b>Dressed Neg. Grid Vol:</b> 479
Dressed Steer Avg:	\$171.62	Steer/Heifer Avg: \$169.79
Dressed Heifer Avg:	\$171.67	<b>TOTAL VOLUME:</b> 30,209
<a href="#">LM_CT106</a>	<b>TOTAL WK TO DATE VOLUME:</b>	<b>41,104</b>
<b>Committed:</b>	<b>24,183</b>	<b>Delivered:</b> 10,500

Thursday in Nebraska and Western Cornbelt cash trading was moderate with good demand. In Nebraska, live moved mostly 3.00 higher at 110.00 and dressed moved mostly 5.00 higher at 172.00. In the Western Cornbelt, live moved 3.00-4.00 higher from 108.00-110.00 and dressed moved 5.00-8.00 higher at 172.00. Thursday in the Southern Plains negotiated cash trading was limited on light demand. A few live moved at 110.00 in Kansas. Last week in the Southern Plains live purchases traded at 107.00.

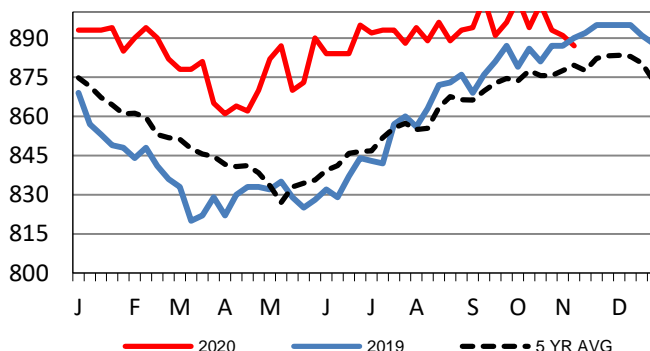
## 5-Area Live Steer Weighted Average

Last Week's Price = \$106.33



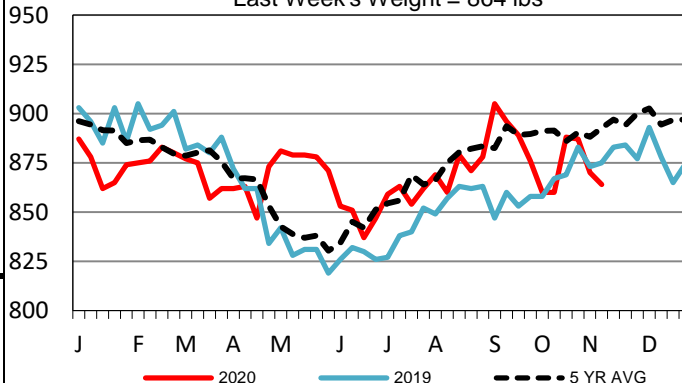
## Kansas Formula Carcass Weights

Last Week's Weight = 887 lbs



## Colorado Formula Carcass Weights

Last Week's Weight = 864 lbs



## USDA Livestock, Poultry and Grain Market News

St. Joseph, Missouri

Phone: 816-676-7000

[stjoe.lpgmn@ams.usda.gov](mailto:stjoe.lpgmn@ams.usda.gov)