

## Daily Direct Steer and Heifer Slaughter Cattle Summary

For Trade on:

Wednesday, November 11, 2020

<a href="#">LM_CT100</a>	<b>5-AREA</b>	<a href="#">LM_CT109</a>
<b>Neg. Cash Volume:</b>	2,344	<b>Dressed Formula Vol:</b> 18,359
Live Steer Avg:	\$108.53	Steer/Heifer Avg: \$170.43
Live Heifer Avg:	\$108.00	<b>Dressed Neg. Grid Vol:</b> 1,856
Dressed Steer Avg:	\$172.00	Steer/Heifer Avg: \$168.48
Dressed Heifer Avg:	\$0.00	<b>TOTAL VOLUME:</b> 22,559
<a href="#">LM_CT106</a>	<b>TOTAL WK TO DATE VOLUME:</b>	<b>108,164</b>
<b>Committed:</b>	<b>36,930</b>	<b>Delivered:</b> 67,494

<a href="#">LM_CT118</a>	<b>TX-OK-NM</b>	<a href="#">LM_CT109</a>
<b>Neg. Cash Volume:</b>	0	<b>Dressed Formula Vol:</b> 2,700
Live Steer Avg:	\$0.00	Steer/Heifer Avg: \$168.90
Live Heifer Avg:	\$0.00	<b>Dressed Neg. Grid Vol:</b> 0
Dressed Steer Avg:	\$0.00	Steer/Heifer Avg: \$0.00
Dressed Heifer Avg:	\$0.00	<b>TOTAL VOLUME:</b> 2,700
<a href="#">LM_CT106</a>	<b>TOTAL WK TO DATE VOLUME:</b>	<b>26,860</b>
<b>Committed:</b>	<b>6,559</b>	<b>Delivered:</b> 13,196

<a href="#">LM_CT121</a>	<b>KANSAS</b>	<a href="#">LM_CT109</a>
<b>Neg. Cash Volume:</b>	133	<b>Dressed Formula Vol:</b> 6,741
Live Steer Avg:	\$0.00	Steer/Heifer Avg: \$172.73
Live Heifer Avg:	\$0.00	<b>Dressed Neg. Grid Vol:</b> 0
Dressed Steer Avg:	\$0.00	Steer/Heifer Avg: \$0.00
Dressed Heifer Avg:	\$0.00	<b>TOTAL VOLUME:</b> 6,874
<a href="#">LM_CT106</a>	<b>TOTAL WK TO DATE VOLUME:</b>	<b>40,491</b>
<b>Committed:</b>	<b>10,669</b>	<b>Delivered:</b> 18,947

<a href="#">LM_CT124</a>	<b>NEBRASKA</b>	<a href="#">LM_CT109</a>
<b>Neg. Cash Volume:</b>	450	<b>Dressed Formula Vol:</b> 5,381
Live Steer Avg:	\$110.00	Steer/Heifer Avg: \$169.02
Live Heifer Avg:	\$0.00	<b>Dressed Neg. Grid Vol:</b> 1,035
Dressed Steer Avg:	\$172.00	Steer/Heifer Avg: \$168.61
Dressed Heifer Avg:	\$0.00	<b>TOTAL VOLUME:</b> 6,866
<a href="#">LM_CT106</a>	<b>TOTAL WK TO DATE VOLUME:</b>	<b>19,986</b>
<b>Committed:</b>	<b>9,497</b>	<b>Delivered:</b> 15,821

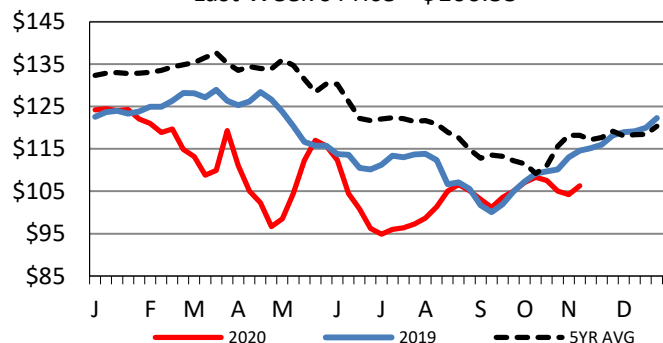
<a href="#">LM_CT134</a>	<b>COLORADO</b>	<a href="#">LM_CT109</a>
<b>Neg. Cash Volume:</b>	0	<b>Dressed Formula Vol:</b> 749
Live Steer Avg:	n/a	Steer/Heifer Avg: \$173.40
Live Heifer Avg:	n/a	<b>Dressed Neg. Grid Vol:</b> 90
Dressed Steer Avg:	n/a	Steer/Heifer Avg: \$173.65
Dressed Heifer Avg:	n/a	<b>TOTAL VOLUME:</b> 839
<a href="#">LM_CT106</a>	<b>TOTAL WK TO DATE VOLUME:</b>	<b>10,590</b>
<b>Committed:</b>	<b>3,293</b>	<b>Delivered:</b> 7,028

<a href="#">LM_CT137</a>	<b>IA-MN</b>	<a href="#">LM_CT109</a>
<b>Neg. Cash Volume:</b>	1,761	<b>Dressed Formula Vol:</b> 3,022
Live Steer Avg:	\$108.00	Steer/Heifer Avg: \$168.65
Live Heifer Avg:	\$108.00	<b>Dressed Neg. Grid Vol:</b> 731
Dressed Steer Avg:	\$172.00	Steer/Heifer Avg: \$167.65
Dressed Heifer Avg:	\$0.00	<b>TOTAL VOLUME:</b> 5,514
<a href="#">LM_CT106</a>	<b>TOTAL WK TO DATE VOLUME:</b>	<b>10,895</b>
<b>Committed:</b>	<b>6,912</b>	<b>Delivered:</b> 12,502

For Wednesday negotiated cash trading was mostly inactive with light demand in Kansas, Nebraska and Western Cornbelt. In the Texas Panhandle negotiated cash trading was at a standstill. Not enough purchases for a market trend in any feeding region. Last week in the Southern Plains and Nebraska live purchases traded at 107.00 and dressed purchases, in Nebraska, traded at 167.00. For the prior week in the Western Cornbelt live and dressed purchases traded from 105.00-106.00 and 164.-167.00, respectively.

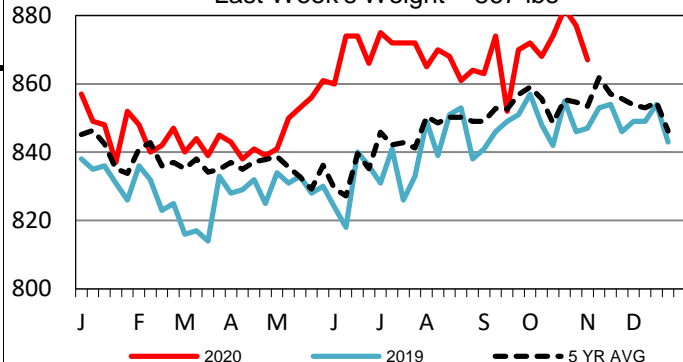
## 5-Area Live Steer Weighted Average

Last Week's Price = \$106.33



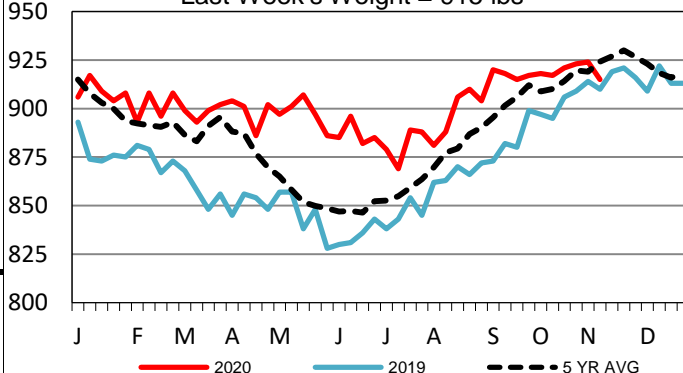
## TX-OK-NM Formula Carcass Weights

Last Week's Weight = 867 lbs



## Nebraska Formula Carcass Weights

Last Week's Weight = 915 lbs



## USDA Livestock, Poultry and Grain Market News

St. Joseph, Missouri

Phone: 816-676-7000

[stjoe.lpgmn@ams.usda.gov](mailto:stjoe.lpgmn@ams.usda.gov)