

## Daily Direct Steer and Heifer Slaughter Cattle Summary

For Trade on:

Tuesday, November 10, 2020

<a href="#">LM_CT100</a>	<b>5-AREA</b>	<a href="#">LM_CT109</a>
<b>Neg. Cash Volume:</b>	38	<b>Dressed Formula Vol:</b> 28,251
<b>Live Steer Avg:</b>	\$0.00	<b>Steer/Heifer Avg:</b> \$170.90
<b>Live Heifer Avg:</b>	\$0.00	<b>Dressed Neg. Grid Vol:</b> 1,152
<b>Dressed Steer Avg:</b>	\$0.00	<b>Steer/Heifer Avg:</b> \$168.98
<b>Dressed Heifer Avg:</b>	\$0.00	<b>TOTAL VOLUME:</b> 29,441
<a href="#">LM_CT106</a>	<b>TOTAL WK TO DATE VOLUME:</b>	<b>85,605</b>
<b>Committed:</b>	<b>52,649</b>	<b>Delivered:</b> 65,490

<a href="#">LM_CT118</a>	<b>TX-OK-NM</b>	<a href="#">LM_CT109</a>
<b>Neg. Cash Volume:</b>	0	<b>Dressed Formula Vol:</b> 7,114
<b>Live Steer Avg:</b>	\$0.00	<b>Steer/Heifer Avg:</b> \$169.70
<b>Live Heifer Avg:</b>	\$0.00	<b>Dressed Neg. Grid Vol:</b> 0
<b>Dressed Steer Avg:</b>	\$0.00	<b>Steer/Heifer Avg:</b> \$0.00
<b>Dressed Heifer Avg:</b>	\$0.00	<b>TOTAL VOLUME:</b> 7,114
<a href="#">LM_CT106</a>	<b>TOTAL WK TO DATE VOLUME:</b>	<b>24,160</b>
<b>Committed:</b>	<b>19,550</b>	<b>Delivered:</b> 15,685

<a href="#">LM_CT121</a>	<b>KANSAS</b>	<a href="#">LM_CT109</a>
<b>Neg. Cash Volume:</b>	0	<b>Dressed Formula Vol:</b> 11,669
<b>Live Steer Avg:</b>	\$0.00	<b>Steer/Heifer Avg:</b> \$171.00
<b>Live Heifer Avg:</b>	\$0.00	<b>Dressed Neg. Grid Vol:</b> 544
<b>Dressed Steer Avg:</b>	\$0.00	<b>Steer/Heifer Avg:</b> \$168.75
<b>Dressed Heifer Avg:</b>	\$0.00	<b>TOTAL VOLUME:</b> 12,213
<a href="#">LM_CT106</a>	<b>TOTAL WK TO DATE VOLUME:</b>	<b>33,617</b>
<b>Committed:</b>	<b>21,555</b>	<b>Delivered:</b> 17,290

<a href="#">LM_CT124</a>	<b>NEBRASKA</b>	<a href="#">LM_CT109</a>
<b>Neg. Cash Volume:</b>	0	<b>Dressed Formula Vol:</b> 5,430
<b>Live Steer Avg:</b>	\$0.00	<b>Steer/Heifer Avg:</b> \$172.16
<b>Live Heifer Avg:</b>	\$0.00	<b>Dressed Neg. Grid Vol:</b> 248
<b>Dressed Steer Avg:</b>	\$0.00	<b>Steer/Heifer Avg:</b> \$169.79
<b>Dressed Heifer Avg:</b>	\$0.00	<b>TOTAL VOLUME:</b> 5,678
<a href="#">LM_CT106</a>	<b>TOTAL WK TO DATE VOLUME:</b>	<b>13,120</b>
<b>Committed:</b>	<b>5,349</b>	<b>Delivered:</b> 15,979

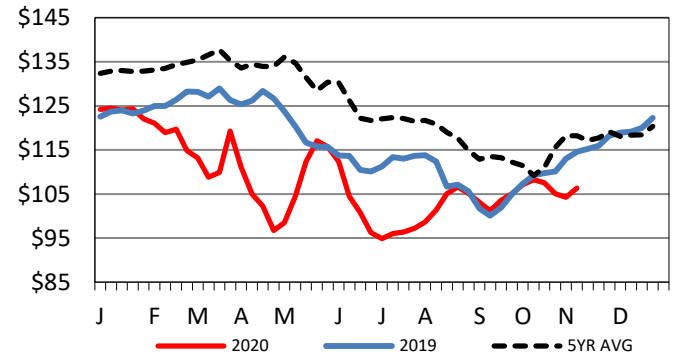
<a href="#">LM_CT134</a>	<b>COLORADO</b>	<a href="#">LM_CT109</a>
<b>Neg. Cash Volume:</b>	0	<b>Dressed Formula Vol:</b> 1,513
<b>Live Steer Avg:</b>	n/a	<b>Steer/Heifer Avg:</b> \$176.88
<b>Live Heifer Avg:</b>	n/a	<b>Dressed Neg. Grid Vol:</b> 0
<b>Dressed Steer Avg:</b>	n/a	<b>Steer/Heifer Avg:</b> \$0.00
<b>Dressed Heifer Avg:</b>	n/a	<b>TOTAL VOLUME:</b> 1,513
<a href="#">LM_CT106</a>	<b>TOTAL WK TO DATE VOLUME:</b>	<b>9,751</b>
<b>Committed:</b>	<b>1,830</b>	<b>Delivered:</b> 7,135

<a href="#">LM_CT137</a>	<b>IA-MN</b>	<a href="#">LM_CT109</a>
<b>Neg. Cash Volume:</b>	38	<b>Dressed Formula Vol:</b> 2,686
<b>Live Steer Avg:</b>	\$0.00	<b>Steer/Heifer Avg:</b> \$167.40
<b>Live Heifer Avg:</b>	\$0.00	<b>Dressed Neg. Grid Vol:</b> 381
<b>Dressed Steer Avg:</b>	\$0.00	<b>Steer/Heifer Avg:</b> \$168.76
<b>Dressed Heifer Avg:</b>	\$0.00	<b>TOTAL VOLUME:</b> 3,105
<a href="#">LM_CT106</a>	<b>TOTAL WK TO DATE VOLUME:</b>	<b>5,381</b>
<b>Committed:</b>	<b>4,365</b>	<b>Delivered:</b> 9,401

For Tuesday negotiated cash trading was at a standstill in the Southern Plains and Nebraska. In the Western Cornbelt negotiated cash trading was mostly inactive on very light demand. Not enough purchases for a market trend. Last week in the Southern Plains and Nebraska live purchases traded at 107.0000 and dressed purchases, in Nebraska, traded at 167.00. For the prior week in the Western Cornbelt live and dressed purchases traded from 105.00-106.00 and 164.-167.00, respectively.

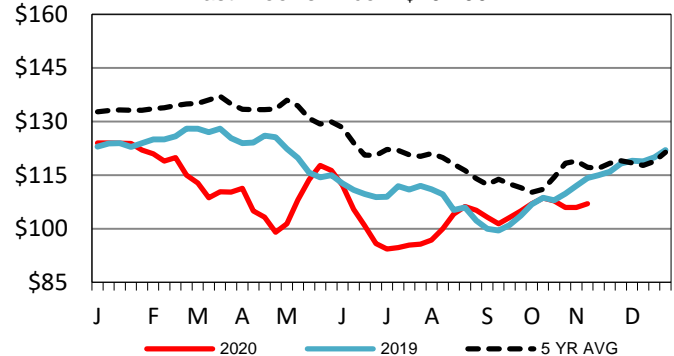
## 5-Area Live Steer Weighted Average

Last Week's Price = \$106.33



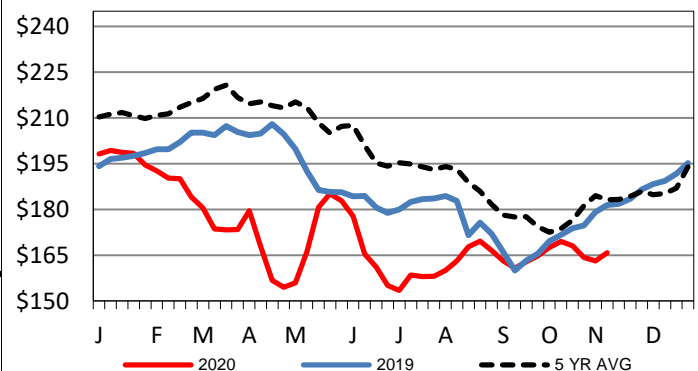
## Kansas Weekly Live Steer Weighted Average

Last Week's Price = \$107.00



## Iowa-Minnesota Wkly Dressed Steer Wtd Avg

Last Week's Price = \$165.75



## USDA Livestock, Poultry and Grain Market News

St. Joseph, Missouri

Phone: 816-676-7000

[stjoe.lpgmn@ams.usda.gov](mailto:stjoe.lpgmn@ams.usda.gov)