

Daily Direct Steer and Heifer Slaughter Cattle Summary

For Trade on:

Wednesday, November 04, 2020

LM_CT100	5-AREA	LM_CT109
Neg. Cash Volume:	39,368	Dressed Formula Vol: 21,902
Live Steer Avg:	\$106.70	Steer/Heifer Avg: \$169.18
Live Heifer Avg:	\$106.83	Dressed Neg. Grid Vol: 1,391
Dressed Steer Avg:	\$161.91	Steer/Heifer Avg: \$167.90
Dressed Heifer Avg:	\$164.39	TOTAL VOLUME: 62,661
LM_CT106	TOTAL WK TO DATE VOLUME:	145,210
Committed:	76,765	Delivered: 70,011

LM_CT118	TX-OK-NM	LM_CT109
Neg. Cash Volume:	6,066	Dressed Formula Vol: 11,689
Live Steer Avg:	\$107.00	Steer/Heifer Avg: \$169.25
Live Heifer Avg:	\$107.00	Dressed Neg. Grid Vol: 0
Dressed Steer Avg:	\$0.00	Steer/Heifer Avg: \$0.00
Dressed Heifer Avg:	\$0.00	TOTAL VOLUME: 17,755
LM_CT106	TOTAL WK TO DATE VOLUME:	37,340
Committed:	12,683	Delivered: 16,997

LM_CT121	KANSAS	LM_CT109
Neg. Cash Volume:	16,816	Dressed Formula Vol: 6,674
Live Steer Avg:	\$107.00	Steer/Heifer Avg: \$169.72
Live Heifer Avg:	\$107.00	Dressed Neg. Grid Vol: 209
Dressed Steer Avg:	\$0.00	Steer/Heifer Avg: \$164.13
Dressed Heifer Avg:	\$0.00	TOTAL VOLUME: 23,699
LM_CT106	TOTAL WK TO DATE VOLUME:	54,115
Committed:	25,258	Delivered: 16,839

LM_CT124	NEBRASKA	LM_CT109
Neg. Cash Volume:	11,997	Dressed Formula Vol: 1,649
Live Steer Avg:	\$106.83	Steer/Heifer Avg: \$174.08
Live Heifer Avg:	\$106.89	Dressed Neg. Grid Vol: 0
Dressed Steer Avg:	\$160.97	Steer/Heifer Avg: \$0.00
Dressed Heifer Avg:	\$0.00	TOTAL VOLUME: 13,646
LM_CT106	TOTAL WK TO DATE VOLUME:	30,222
Committed:	25,400	Delivered: 17,507

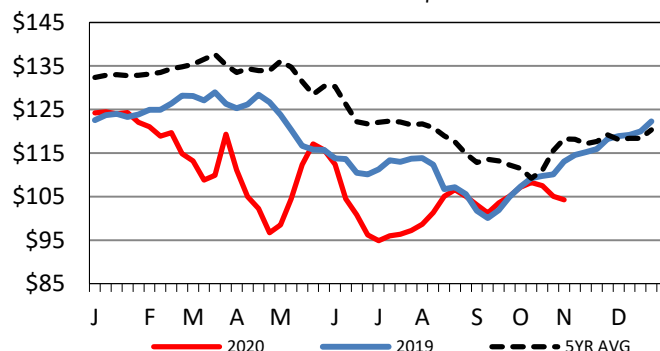
LM_CT134	COLORADO	LM_CT109
Neg. Cash Volume:	0	Dressed Formula Vol: 126
Live Steer Avg:	n/a	Steer/Heifer Avg: \$168.13
Live Heifer Avg:	n/a	Dressed Neg. Grid Vol: 516
Dressed Steer Avg:	n/a	Steer/Heifer Avg: \$172.83
Dressed Heifer Avg:	n/a	TOTAL VOLUME: 642
LM_CT106	TOTAL WK TO DATE VOLUME:	9,174
Committed:	5,433	Delivered: 8,457

LM_CT137	IA-MN	LM_CT109
Neg. Cash Volume:	4,489	Dressed Formula Vol: 1,884
Live Steer Avg:	\$104.27	Steer/Heifer Avg: \$162.39
Live Heifer Avg:	\$104.53	Dressed Neg. Grid Vol: 666
Dressed Steer Avg:	\$163.90	Steer/Heifer Avg: \$165.65
Dressed Heifer Avg:	\$164.39	TOTAL VOLUME: 7,039
LM_CT106	TOTAL WK TO DATE VOLUME:	14,635
Committed:	7,991	Delivered: 10,211

For Wednesday in the Texas Panhandle cash trading was slow on moderate demand. In Kansas negotiated cash trading was moderate with good demand. Live traded 1.00 higher at 107.00. For Wednesday in Nebraska cash trading was slow to moderate with moderate demand. Live traded 2.00-4.00 higher at 107.00. Last week dressed traded from 158.00-163.00. For Wednesday in the Western Cornbelt cash trading was limited on light demand. Last week live purchases traded from 101.00-103.00 and dressed purchases traded from 158.00-165.00.

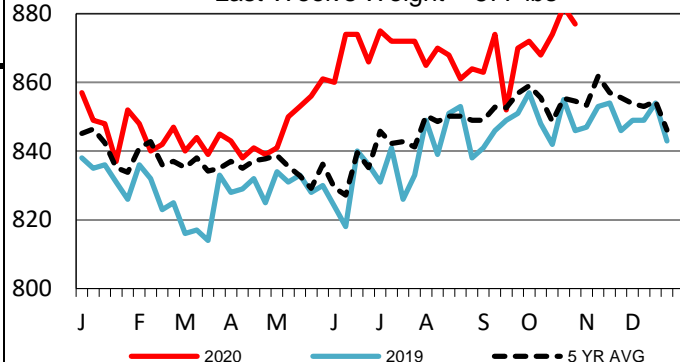
5-Area Live Steer Weighted Average

Last Week's Price = \$104.24



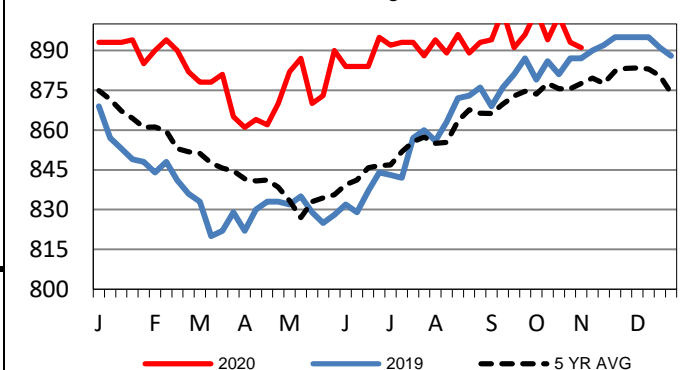
TX-OK-NM Formula Carcass Weights

Last Week's Weight = 877 lbs



Kansas Formula Carcass Weights

Last Week's Weight = 891 lbs



USDA Livestock, Poultry and Grain Market News

St. Joseph, Missouri

Phone: 816-676-7000

stjoe.lpgmn@ams.usda.gov