

Daily Direct Steer and Heifer Slaughter Cattle Summary

For Trade on:

Monday, November 02, 2020

LM_CT100	5-AREA	LM_CT109
Neg. Cash Volume:	445	Dressed Formula Vol: 43,145
Live Steer Avg:	\$0.00	Steer/Heifer Avg: \$169.23
Live Heifer Avg:	\$0.00	Dressed Neg. Grid Vol: 4,023
Dressed Steer Avg:	\$164.00	Steer/Heifer Avg: \$171.63
Dressed Heifer Avg:	\$164.00	TOTAL VOLUME: 47,613
LM_CT106	TOTAL WK TO DATE VOLUME:	47,613
Committed:	53,193	Delivered: 71,081

LM_CT118	TX-OK-NM	LM_CT109
Neg. Cash Volume:	0	Dressed Formula Vol: 10,919
Live Steer Avg:	\$0.00	Steer/Heifer Avg: \$168.08
Live Heifer Avg:	\$0.00	Dressed Neg. Grid Vol: 0
Dressed Steer Avg:	\$0.00	Steer/Heifer Avg: \$0.00
Dressed Heifer Avg:	\$0.00	TOTAL VOLUME: 10,919
LM_CT106	TOTAL WK TO DATE VOLUME:	10,919
Committed:	10,116	Delivered: 17,316

LM_CT121	KANSAS	LM_CT109
Neg. Cash Volume:	0	Dressed Formula Vol: 19,171
Live Steer Avg:	\$0.00	Steer/Heifer Avg: \$170.69
Live Heifer Avg:	\$0.00	Dressed Neg. Grid Vol: 1,262
Dressed Steer Avg:	\$0.00	Steer/Heifer Avg: \$169.13
Dressed Heifer Avg:	\$0.00	TOTAL VOLUME: 20,433
LM_CT106	TOTAL WK TO DATE VOLUME:	20,433
Committed:	10,618	Delivered: 20,008

LM_CT124	NEBRASKA	LM_CT109
Neg. Cash Volume:	0	Dressed Formula Vol: 6,180
Live Steer Avg:	\$0.00	Steer/Heifer Avg: \$167.11
Live Heifer Avg:	\$0.00	Dressed Neg. Grid Vol: 1,646
Dressed Steer Avg:	\$0.00	Steer/Heifer Avg: \$173.13
Dressed Heifer Avg:	\$0.00	TOTAL VOLUME: 7,826
LM_CT106	TOTAL WK TO DATE VOLUME:	7,826
Committed:	13,096	Delivered: 16,425

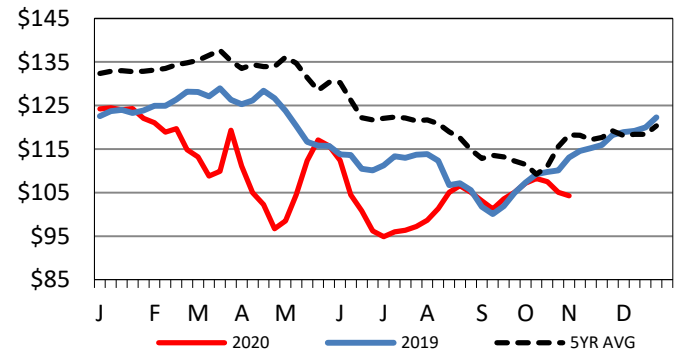
LM_CT134	COLORADO	LM_CT109
Neg. Cash Volume:	0	Dressed Formula Vol: 5,314
Live Steer Avg:	n/a	Steer/Heifer Avg: \$169.24
Live Heifer Avg:	n/a	Dressed Neg. Grid Vol: 284
Dressed Steer Avg:	n/a	Steer/Heifer Avg: \$173.51
Dressed Heifer Avg:	n/a	TOTAL VOLUME: 5,598
LM_CT106	TOTAL WK TO DATE VOLUME:	5,598
Committed:	10,785	Delivered: 7,616

LM_CT137	IA-MN	LM_CT109
Neg. Cash Volume:	445	Dressed Formula Vol: 1,671
Live Steer Avg:	\$0.00	Steer/Heifer Avg: \$167.31
Live Heifer Avg:	\$0.00	Dressed Neg. Grid Vol: 831
Dressed Steer Avg:	\$164.00	Steer/Heifer Avg: \$171.80
Dressed Heifer Avg:	\$164.00	TOTAL VOLUME: 2,947
LM_CT106	TOTAL WK TO DATE VOLUME:	2,947
Committed:	8,578	Delivered: 9,716

For Monday negotiated cash trading was at a standstill in the Southern Plains and Nebraska. In the Western Cornbelt negotiated cash trading was mostly inactive on light demand. Not enough purchases for a market trend. Last week in the Southern Plains live traded at 106.00, on light test. For the prior week in Nebraska live traded from 103.00-105.00 and dressed, on a very light test, traded from 158.00-163.00. For the previous week in the Western Cornbelt live traded from 101.00-103.00 and dressed, on a very light test, traded from 158.00-165.00.

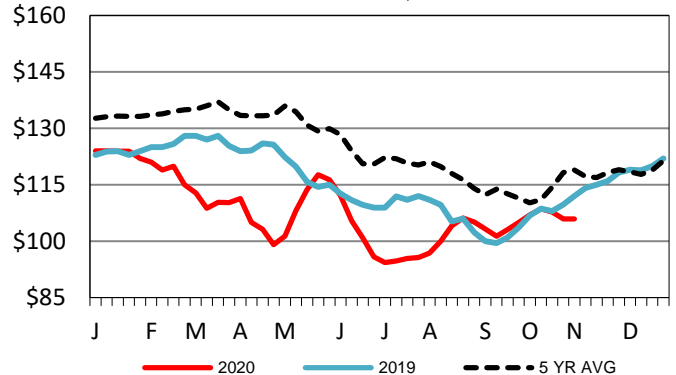
5-Area Live Steer Weighted Average

Last Week's Price = \$104.24



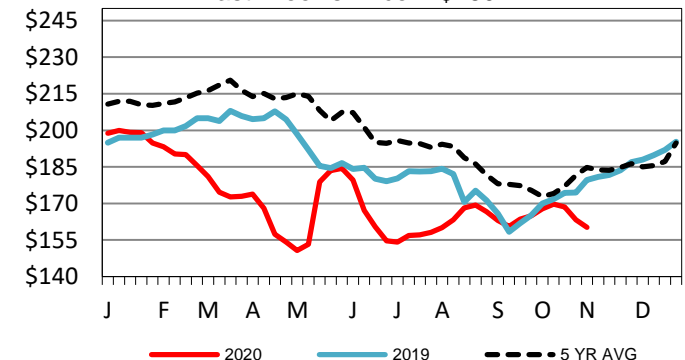
Kansas Weekly Live Steer Weighted Average

Last Week's Price = \$105.92



Nebraska Weekly Dressed Steer Weighted Avg

Last Week's Price = \$160.14



USDA Livestock, Poultry and Grain Market News

St. Joseph, Missouri

Phone: 816-676-7000

stjoe.lpgmn@ams.usda.gov