

## Daily Direct Steer and Heifer Slaughter Cattle Summary

For Trade on:

Wednesday, October 21, 2020

<a href="#">LM_CT100</a>	<b>5-AREA</b>	<a href="#">LM_CT109</a>
<b>Neg. Cash Volume:</b>	23,213	<b>Dressed Formula Vol:</b> 22,596
Live Steer Avg:	\$104.32	Steer/Heifer Avg: \$173.27
Live Heifer Avg:	\$104.70	<b>Dressed Neg. Grid Vol:</b> 1,524
Dressed Steer Avg:	\$163.30	Steer/Heifer Avg: \$169.65
Dressed Heifer Avg:	\$163.46	<b>TOTAL VOLUME:</b> 47,333
<a href="#">LM_CT106</a>	<b>TOTAL WK TO DATE VOLUME:</b>	173,339
<b>Committed:</b>	64,118	<b>Delivered:</b> 66,499

<a href="#">LM_CT118</a>	<b>TX-OK-NM</b>	<a href="#">LM_CT109</a>
<b>Neg. Cash Volume:</b>	780	<b>Dressed Formula Vol:</b> 4,086
Live Steer Avg:	\$106.39	Steer/Heifer Avg: \$170.01
Live Heifer Avg:	\$106.16	<b>Dressed Neg. Grid Vol:</b> 0
Dressed Steer Avg:	\$0.00	Steer/Heifer Avg: \$0.00
Dressed Heifer Avg:	\$0.00	<b>TOTAL VOLUME:</b> 4,866
<a href="#">LM_CT106</a>	<b>TOTAL WK TO DATE VOLUME:</b>	32,889
<b>Committed:</b>	7,971	<b>Delivered:</b> 19,477

<a href="#">LM_CT121</a>	<b>KANSAS</b>	<a href="#">LM_CT109</a>
<b>Neg. Cash Volume:</b>	2,204	<b>Dressed Formula Vol:</b> 9,350
Live Steer Avg:	\$105.40	Steer/Heifer Avg: \$173.82
Live Heifer Avg:	\$105.66	<b>Dressed Neg. Grid Vol:</b> 0
Dressed Steer Avg:	\$0.00	Steer/Heifer Avg: \$0.00
Dressed Heifer Avg:	\$0.00	<b>TOTAL VOLUME:</b> 11,554
<a href="#">LM_CT106</a>	<b>TOTAL WK TO DATE VOLUME:</b>	59,933
<b>Committed:</b>	17,567	<b>Delivered:</b> 15,979

<a href="#">LM_CT124</a>	<b>NEBRASKA</b>	<a href="#">LM_CT109</a>
<b>Neg. Cash Volume:</b>	13,061	<b>Dressed Formula Vol:</b> 5,187
Live Steer Avg:	\$104.42	Steer/Heifer Avg: \$175.49
Live Heifer Avg:	\$104.81	<b>Dressed Neg. Grid Vol:</b> 771
Dressed Steer Avg:	\$163.32	Steer/Heifer Avg: \$169.17
Dressed Heifer Avg:	\$164.02	<b>TOTAL VOLUME:</b> 19,019
<a href="#">LM_CT106</a>	<b>TOTAL WK TO DATE VOLUME:</b>	44,833
<b>Committed:</b>	22,100	<b>Delivered:</b> 15,392

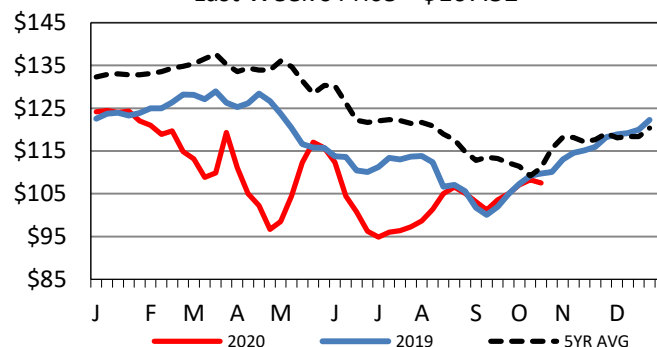
<a href="#">LM_CT134</a>	<b>COLORADO</b>	<a href="#">LM_CT109</a>
<b>Neg. Cash Volume:</b>	0	<b>Dressed Formula Vol:</b> 759
Live Steer Avg:	n/a	Steer/Heifer Avg: \$180.98
Live Heifer Avg:	n/a	<b>Dressed Neg. Grid Vol:</b> 152
Dressed Steer Avg:	n/a	Steer/Heifer Avg: \$173.00
Dressed Heifer Avg:	n/a	<b>TOTAL VOLUME:</b> 911
<a href="#">LM_CT106</a>	<b>TOTAL WK TO DATE VOLUME:</b>	7,915
<b>Committed:</b>	8,601	<b>Delivered:</b> 5,901

<a href="#">LM_CT137</a>	<b>IA-MN</b>	<a href="#">LM_CT109</a>
<b>Neg. Cash Volume:</b>	7,168	<b>Dressed Formula Vol:</b> 3,375
Live Steer Avg:	\$103.02	Steer/Heifer Avg: \$170.62
Live Heifer Avg:	\$103.50	<b>Dressed Neg. Grid Vol:</b> 601
Dressed Steer Avg:	\$163.22	Steer/Heifer Avg: \$169.41
Dressed Heifer Avg:	\$163.28	<b>TOTAL VOLUME:</b> 11,144
<a href="#">LM_CT106</a>	<b>TOTAL WK TO DATE VOLUME:</b>	28,110
<b>Committed:</b>	7,879	<b>Delivered:</b> 9,750

On Wednesday negotiated cash trading was limited on light demand in the Southern Plains, not enough for a full market trend. The last reported live market was on Tuesday at 106.00. In Nebraska negotiated cash trading and demand were moderate. Compared to last week, live traded 3.00 lower from 104.00-105.00 and dressed traded 4.00-7.00 lower from 162.00-165.00. In the Western Cornbelt negotiated cash trade was slow on moderate demand. Thus far for the week live traded mostly 3.00 lower from 103.00-105.00 and dressed traded mostly 4.00 lower from 163.00-165.00.

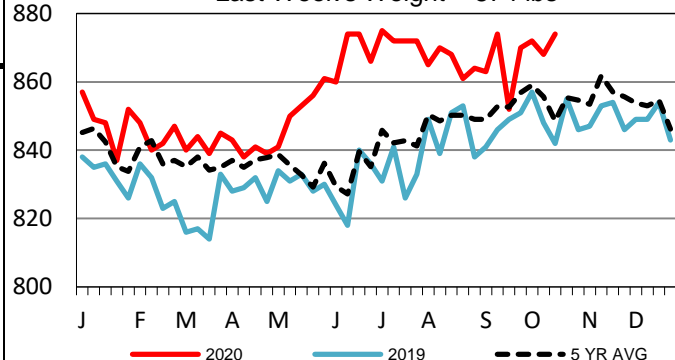
## 5-Area Live Steer Weighted Average

Last Week's Price = \$107.52



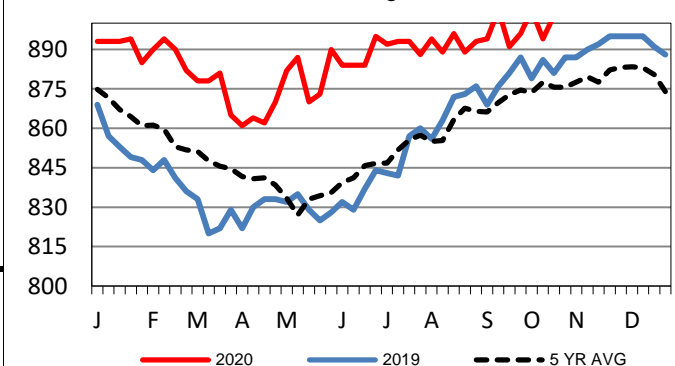
## TX-OK-NM Formula Carcass Weights

Last Week's Weight = 874 lbs



## Kansas Formula Carcass Weights

Last Week's Weight = 903 lbs



## USDA Livestock, Poultry and Grain Market News

St. Joseph, Missouri

Phone: 816-676-7000

[stjoe.lpgmn@ams.usda.gov](mailto:stjoe.lpgmn@ams.usda.gov)