

Daily Direct Steer and Heifer Slaughter Cattle Summary

For Trade on:

Monday, October 19, 2020

LM_CT100	5-AREA	LM_CT109
Neg. Cash Volume:	27,958	Dressed Formula Vol: 43,320
Live Steer Avg:	\$105.95	Steer/Heifer Avg: \$173.01
Live Heifer Avg:	\$105.71	Dressed Neg. Grid Vol: 4,045
Dressed Steer Avg:	\$165.17	Steer/Heifer Avg: \$170.14
Dressed Heifer Avg:	\$165.02	TOTAL VOLUME: 75,323
LM_CT106	TOTAL WK TO DATE VOLUME:	75,323
Committed:	121,346	Delivered: 75,170

LM_CT118	TX-OK-NM	LM_CT109
Neg. Cash Volume:	8,510	Dressed Formula Vol: 8,434
Live Steer Avg:	\$105.97	Steer/Heifer Avg: \$172.67
Live Heifer Avg:	\$105.97	Dressed Neg. Grid Vol: 0
Dressed Steer Avg:	\$0.00	Steer/Heifer Avg: \$0.00
Dressed Heifer Avg:	\$0.00	TOTAL VOLUME: 16,944
LM_CT106	TOTAL WK TO DATE VOLUME:	16,944
Committed:	38,807	Delivered: 18,966

LM_CT121	KANSAS	LM_CT109
Neg. Cash Volume:	11,939	Dressed Formula Vol: 23,516
Live Steer Avg:	\$106.00	Steer/Heifer Avg: \$173.54
Live Heifer Avg:	\$106.00	Dressed Neg. Grid Vol: 1,153
Dressed Steer Avg:	\$0.00	Steer/Heifer Avg: \$172.62
Dressed Heifer Avg:	\$0.00	TOTAL VOLUME: 36,608
LM_CT106	TOTAL WK TO DATE VOLUME:	36,608
Committed:	29,492	Delivered: 19,208

LM_CT124	NEBRASKA	LM_CT109
Neg. Cash Volume:	3,782	Dressed Formula Vol: 6,951
Live Steer Avg:	\$0.00	Steer/Heifer Avg: \$172.61
Live Heifer Avg:	\$0.00	Dressed Neg. Grid Vol: 941
Dressed Steer Avg:	\$165.00	Steer/Heifer Avg: \$168.86
Dressed Heifer Avg:	\$165.18	TOTAL VOLUME: 11,674
LM_CT106	TOTAL WK TO DATE VOLUME:	11,674
Committed:	24,969	Delivered: 15,823

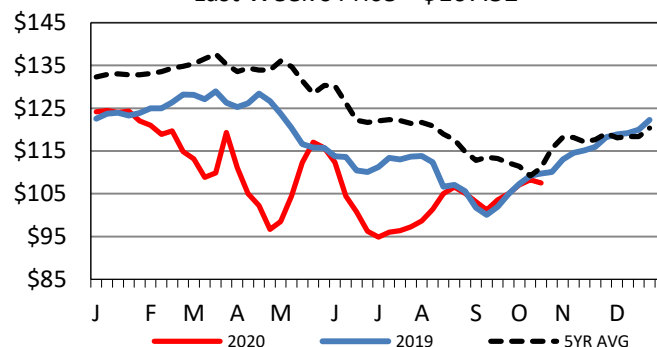
LM_CT134	COLORADO	LM_CT109
Neg. Cash Volume:	0	Dressed Formula Vol: 2,835
Live Steer Avg:	n/a	Steer/Heifer Avg: \$172.53
Live Heifer Avg:	n/a	Dressed Neg. Grid Vol: 412
Dressed Steer Avg:	n/a	Steer/Heifer Avg: \$171.41
Dressed Heifer Avg:	n/a	TOTAL VOLUME: 3,247
LM_CT106	TOTAL WK TO DATE VOLUME:	3,247
Committed:	6,342	Delivered: 8,252

LM_CT137	IA-MN	LM_CT109
Neg. Cash Volume:	3,727	Dressed Formula Vol: 1,661
Live Steer Avg:	\$103.00	Steer/Heifer Avg: \$169.39
Live Heifer Avg:	\$104.65	Dressed Neg. Grid Vol: 1,574
Dressed Steer Avg:	\$165.33	Steer/Heifer Avg: \$168.87
Dressed Heifer Avg:	\$164.00	TOTAL VOLUME: 6,962
LM_CT106	TOTAL WK TO DATE VOLUME:	6,962
Committed:	21,736	Delivered: 12,921

For Monday negotiated cash trading in the Southern Plains was moderate on light demand with live moving 2.00 lower than last week at 106.00. In Nebraska and the Western Cornbelt, negotiated cash trading was slow on light demand. In Nebraska a few early live and dressed moving at 105.00 and 165.00 respectfully. In the Western Cornbelt a few early live moving at 105.00 and dressed moving at 164.00. Last week in Nebraska live moved at 108.00 and dressed moved at 169.00. Last week in the Western Cornbelt live moved from 105.00-107.00 and dressed moved from 167.00-168.00.

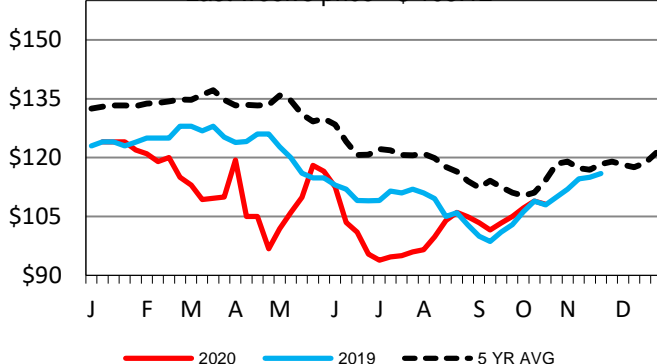
5-Area Live Steer Weighted Average

Last Week's Price = \$107.52



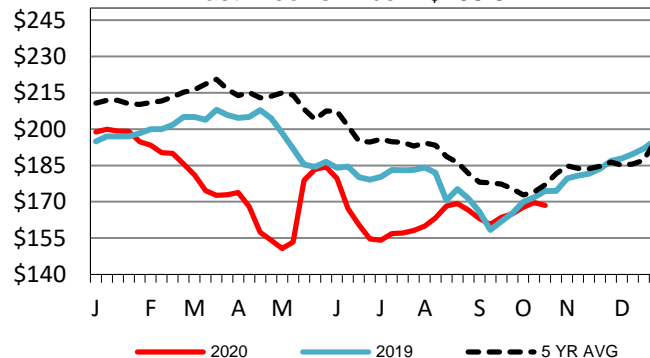
TX-OK-NM Wkly Live Steer Wtd Avg

Last week's price = \$108.12



Nebraska Weekly Dressed Steer Weighted Avg

Last Week's Price = \$168.57



USDA Livestock, Poultry and Grain Market News

St. Joseph, Missouri

Phone: 816-676-7000

stjoe.lpgmn@ams.usda.gov