

Daily Direct Steer and Heifer Slaughter Cattle Summary

For Trade on:

Thursday, October 15, 2020

LM_CT100	5-AREA	LM_CT109
Neg. Cash Volume:	24,914	Dressed Formula Vol: 30,190
Live Steer Avg:	\$107.19	Steer/Heifer Avg: \$175.91
Live Heifer Avg:	\$107.65	Dressed Neg. Grid Vol: 1,633
Dressed Steer Avg:	\$167.95	Steer/Heifer Avg: \$169.83
Dressed Heifer Avg:	\$167.77	TOTAL VOLUME: 56,737
LM_CT106	TOTAL WK TO DATE VOLUME:	235,314
Committed:	85,027	Delivered: 64,578

LM_CT118	TX-OK-NM	LM_CT109
Neg. Cash Volume:	298	Dressed Formula Vol: 5,692
Live Steer Avg:	\$0.00	Steer/Heifer Avg: \$175.26
Live Heifer Avg:	\$108.00	Dressed Neg. Grid Vol: 0
Dressed Steer Avg:	\$0.00	Steer/Heifer Avg: \$0.00
Dressed Heifer Avg:	\$0.00	TOTAL VOLUME: 5,990
LM_CT106	TOTAL WK TO DATE VOLUME:	45,432
Committed:	18,799	Delivered: 16,610

LM_CT121	KANSAS	LM_CT109
Neg. Cash Volume:	563	Dressed Formula Vol: 8,206
Live Steer Avg:	\$108.00	Steer/Heifer Avg: \$175.40
Live Heifer Avg:	\$108.00	Dressed Neg. Grid Vol: 0
Dressed Steer Avg:	\$168.00	Steer/Heifer Avg: \$0.00
Dressed Heifer Avg:	\$0.00	TOTAL VOLUME: 8,769
LM_CT106	TOTAL WK TO DATE VOLUME:	63,300
Committed:	15,910	Delivered: 16,651

LM_CT124	NEBRASKA	LM_CT109
Neg. Cash Volume:	15,016	Dressed Formula Vol: 10,662
Live Steer Avg:	\$107.86	Steer/Heifer Avg: \$173.29
Live Heifer Avg:	\$107.96	Dressed Neg. Grid Vol: 685
Dressed Steer Avg:	\$168.49	Steer/Heifer Avg: \$168.90
Dressed Heifer Avg:	\$168.00	TOTAL VOLUME: 26,363
LM_CT106	TOTAL WK TO DATE VOLUME:	69,403
Committed:	28,806	Delivered: 14,534

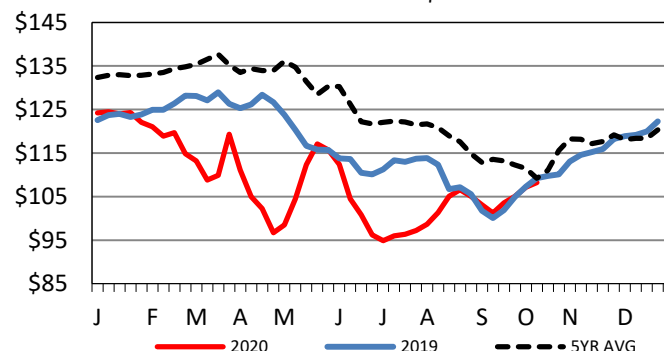
LM_CT134	COLORADO	LM_CT109
Neg. Cash Volume:	0	Dressed Formula Vol: 3,806
Live Steer Avg:	n/a	Steer/Heifer Avg: \$186.97
Live Heifer Avg:	n/a	Dressed Neg. Grid Vol: 252
Dressed Steer Avg:	n/a	Steer/Heifer Avg: \$170.36
Dressed Heifer Avg:	n/a	TOTAL VOLUME: 4,058
LM_CT106	TOTAL WK TO DATE VOLUME:	13,614
Committed:	7,409	Delivered: 5,900

LM_CT137	IA-MN	LM_CT109
Neg. Cash Volume:	9,037	Dressed Formula Vol: 2,279
Live Steer Avg:	\$105.35	Steer/Heifer Avg: \$172.81
Live Heifer Avg:	\$106.51	Dressed Neg. Grid Vol: 720
Dressed Steer Avg:	\$167.28	Steer/Heifer Avg: \$170.46
Dressed Heifer Avg:	\$167.26	TOTAL VOLUME: 12,036
LM_CT106	TOTAL WK TO DATE VOLUME:	44,563
Committed:	14,103	Delivered: 10,883

On Thursday cash trading in the Southern Plains was mostly inactive on very light demand. The last reported market was on Wednesday at 108.00. In Nebraska cash trading and demand were moderate. Live moved steady to 1.00 higher at 108.00 compared to Wednesday. A few dressed moved from 168.00-169.00. The last reported dressed market was on Wednesday at 169.00. In the Western Cornbelt cash trading was slow on moderate demand. Compared to Wednesday both live and dressed moved 1.00 to 2.00 lower from 105.00-107.00 and 167.00-168.00, respectively.

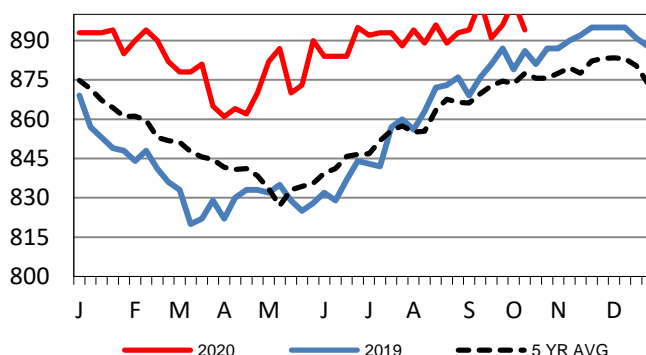
5-Area Live Steer Weighted Average

Last Week's Price = \$108.26



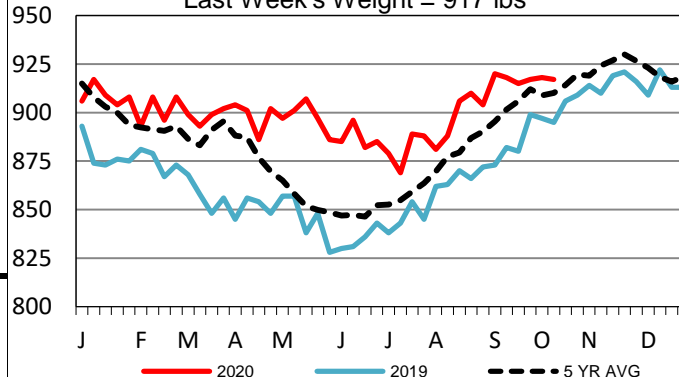
Kansas Formula Carcass Weights

Last Week's Weight = 894 lbs



Nebraska Formula Carcass Weights

Last Week's Weight = 917 lbs



USDA Livestock, Poultry and Grain Market News

St. Joseph, Missouri

Phone: 816-676-7000

stjoe.lpgmn@ams.usda.gov