

Daily Direct Steer and Heifer Slaughter Cattle Summary

For Trade on:

Wednesday, October 14, 2020

LM_CT100	5-AREA	LM_CT109
Neg. Cash Volume:	47,140	Dressed Formula Vol: 28,264
Live Steer Avg:	\$107.75	Steer/Heifer Avg: \$173.33
Live Heifer Avg:	\$107.90	Dressed Neg. Grid Vol: 2,408
Dressed Steer Avg:	\$168.82	Steer/Heifer Avg: \$168.92
Dressed Heifer Avg:	\$169.00	TOTAL VOLUME: 77,812
LM_CT106	TOTAL WK TO DATE VOLUME:	178,577
Committed:	95,365	Delivered: 68,986

LM_CT118	TX-OK-NM	LM_CT109
Neg. Cash Volume:	5,739	Dressed Formula Vol: 11,125
Live Steer Avg:	\$108.02	Steer/Heifer Avg: \$173.46
Live Heifer Avg:	\$108.02	Dressed Neg. Grid Vol: 0
Dressed Steer Avg:	\$0.00	Steer/Heifer Avg: \$0.00
Dressed Heifer Avg:	\$0.00	TOTAL VOLUME: 16,864
LM_CT106	TOTAL WK TO DATE VOLUME:	39,442
Committed:	34,377	Delivered: 17,379

LM_CT121	KANSAS	LM_CT109
Neg. Cash Volume:	12,835	Dressed Formula Vol: 8,730
Live Steer Avg:	\$108.00	Steer/Heifer Avg: \$174.04
Live Heifer Avg:	\$108.00	Dressed Neg. Grid Vol: 0
Dressed Steer Avg:	\$169.00	Steer/Heifer Avg: \$0.00
Dressed Heifer Avg:	\$0.00	TOTAL VOLUME: 21,565
LM_CT106	TOTAL WK TO DATE VOLUME:	54,531
Committed:	29,220	Delivered: 19,059

LM_CT124	NEBRASKA	LM_CT109
Neg. Cash Volume:	13,486	Dressed Formula Vol: 4,475
Live Steer Avg:	\$107.37	Steer/Heifer Avg: \$172.36
Live Heifer Avg:	\$107.66	Dressed Neg. Grid Vol: 1,274
Dressed Steer Avg:	\$168.78	Steer/Heifer Avg: \$169.27
Dressed Heifer Avg:	\$169.00	TOTAL VOLUME: 19,235
LM_CT106	TOTAL WK TO DATE VOLUME:	43,040
Committed:	15,031	Delivered: 16,536

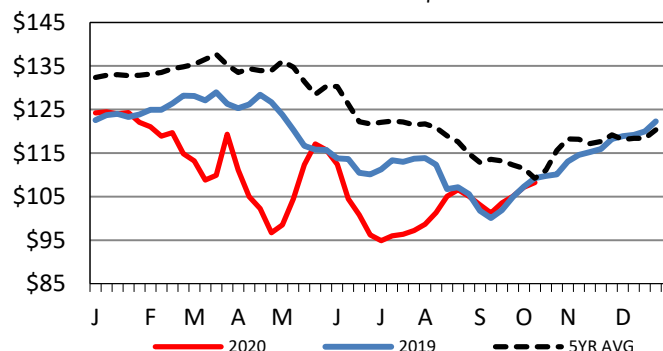
LM_CT134	COLORADO	LM_CT109
Neg. Cash Volume:	0	Dressed Formula Vol: 895
Live Steer Avg:	n/a	Steer/Heifer Avg: \$175.82
Live Heifer Avg:	n/a	Dressed Neg. Grid Vol: 215
Dressed Steer Avg:	n/a	Steer/Heifer Avg: \$170.01
Dressed Heifer Avg:	n/a	TOTAL VOLUME: 1,110
LM_CT106	TOTAL WK TO DATE VOLUME:	9,556
Committed:	3,382	Delivered: 6,570

LM_CT137	IA-MN	LM_CT109
Neg. Cash Volume:	15,080	Dressed Formula Vol: 3,237
Live Steer Avg:	\$107.55	Steer/Heifer Avg: \$171.63
Live Heifer Avg:	\$107.65	Dressed Neg. Grid Vol: 919
Dressed Steer Avg:	\$168.83	Steer/Heifer Avg: \$168.18
Dressed Heifer Avg:	\$169.00	TOTAL VOLUME: 19,236
LM_CT106	TOTAL WK TO DATE VOLUME:	32,527
Committed:	13,355	Delivered: 9,442

On Wednesday cash trading in the Texas Panhandle was slow on light to moderate demand. In Kansas cash trading and demand were moderate. In the Southern Plains live moved 1.00 lower at 108.00. Cash trading and demand in Nebraska and the Western Cornbelt were moderate. In Nebraska live moved steady to 1.00 lower from 107.00-108.00, and dressed moved 1.00 lower at 169.00. In the Western Cornbelt live moved steady to 1.00 higher from 107.00-108.00 and dressed moved steady to 1.00 lower at 169.00.

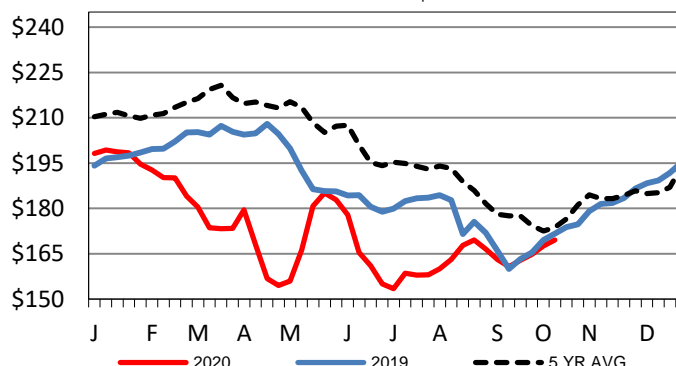
5-Area Live Steer Weighted Average

Last Week's Price = \$108.26



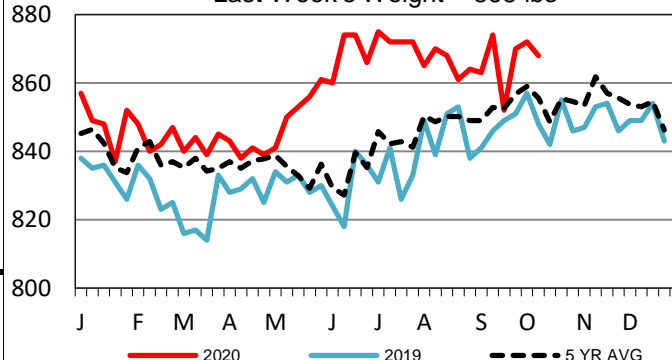
Iowa-Minnesota Wkly Dressed Steer Wtd Avg

Last Week's Price = \$169.54



TX-OK-NM Formula Carcass Weights

Last Week's Weight = 868 lbs



USDA Livestock, Poultry and Grain Market News

St. Joseph, Missouri

Phone: 816-676-7000

stjoe.lpgmn@ams.usda.gov