

Daily Direct Steer and Heifer Slaughter Cattle Summary

For Trade on:

Tuesday, October 13, 2020

LM_CT100	5-AREA	LM_CT109
Neg. Cash Volume:	10,002	Dressed Formula Vol: 31,734
Live Steer Avg:	\$107.45	Steer/Heifer Avg: \$173.25
Live Heifer Avg:	\$107.14	Dressed Neg. Grid Vol: 3,106
Dressed Steer Avg:	\$168.78	Steer/Heifer Avg: \$168.51
Dressed Heifer Avg:	\$167.64	TOTAL VOLUME: 44,842
LM_CT106	TOTAL WK TO DATE VOLUME:	100,765
Committed:	64,465	Delivered: 69,898

LM_CT118	TX-OK-NM	LM_CT109
Neg. Cash Volume:	0	Dressed Formula Vol: 5,769
Live Steer Avg:	\$0.00	Steer/Heifer Avg: \$171.58
Live Heifer Avg:	\$0.00	Dressed Neg. Grid Vol: 320
Dressed Steer Avg:	\$0.00	Steer/Heifer Avg: \$168.60
Dressed Heifer Avg:	\$0.00	TOTAL VOLUME: 6,089
LM_CT106	TOTAL WK TO DATE VOLUME:	22,578
Committed:	16,150	Delivered: 17,367

LM_CT121	KANSAS	LM_CT109
Neg. Cash Volume:	1,153	Dressed Formula Vol: 9,415
Live Steer Avg:	\$108.00	Steer/Heifer Avg: \$171.37
Live Heifer Avg:	\$108.00	Dressed Neg. Grid Vol: 378
Dressed Steer Avg:	\$0.00	Steer/Heifer Avg: \$168.45
Dressed Heifer Avg:	\$0.00	TOTAL VOLUME: 10,946
LM_CT106	TOTAL WK TO DATE VOLUME:	32,966
Committed:	18,881	Delivered: 19,423

LM_CT124	NEBRASKA	LM_CT109
Neg. Cash Volume:	3,949	Dressed Formula Vol: 8,216
Live Steer Avg:	\$107.70	Steer/Heifer Avg: \$175.22
Live Heifer Avg:	\$107.33	Dressed Neg. Grid Vol: 1,329
Dressed Steer Avg:	\$169.00	Steer/Heifer Avg: \$168.24
Dressed Heifer Avg:	\$0.00	TOTAL VOLUME: 13,494
LM_CT106	TOTAL WK TO DATE VOLUME:	23,805
Committed:	14,848	Delivered: 16,632

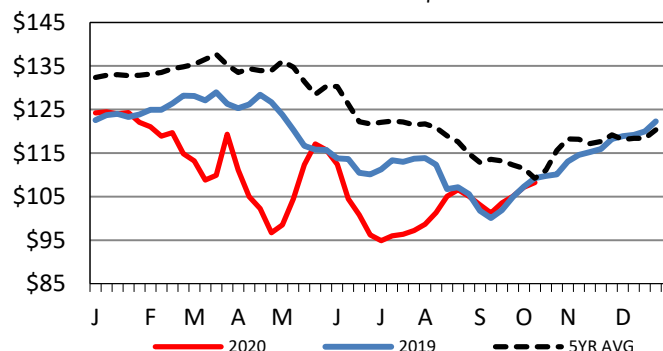
LM_CT134	COLORADO	LM_CT109
Neg. Cash Volume:	0	Dressed Formula Vol: 5,785
Live Steer Avg:	n/a	Steer/Heifer Avg: \$175.98
Live Heifer Avg:	n/a	Dressed Neg. Grid Vol: 780
Dressed Steer Avg:	n/a	Steer/Heifer Avg: \$168.33
Dressed Heifer Avg:	n/a	TOTAL VOLUME: 6,565
LM_CT106	TOTAL WK TO DATE VOLUME:	8,446
Committed:	6,273	Delivered: 6,300

LM_CT137	IA-MN	LM_CT109
Neg. Cash Volume:	4,900	Dressed Formula Vol: 2,579
Live Steer Avg:	\$107.00	Steer/Heifer Avg: \$171.49
Live Heifer Avg:	\$106.93	Dressed Neg. Grid Vol: 387
Dressed Steer Avg:	\$168.72	Steer/Heifer Avg: \$169.48
Dressed Heifer Avg:	\$167.64	TOTAL VOLUME: 7,866
LM_CT106	TOTAL WK TO DATE VOLUME:	13,291
Committed:	8,313	Delivered: 10,176

On Tuesday cash trading in Nebraska and the Western Cornbelt was slow on light to moderate demand. In Nebraska a few live moved from 107.00- 108.00. Last week in Nebraska live moved mostly at 108.00 and dressed moved at 170.00. In the Western Cornbelt live moved steady to 1.00 lower at 107.00. Last week in the Western Cornbelt dressed moved from 169.00-170.00. In Kansas cash trading was limited on very light demand, a few live at 108.00. Negotiated cash trade in the Texas Panhandle was at a standstill. Last week in the Southern Plains, live purchases moved at 109.00.

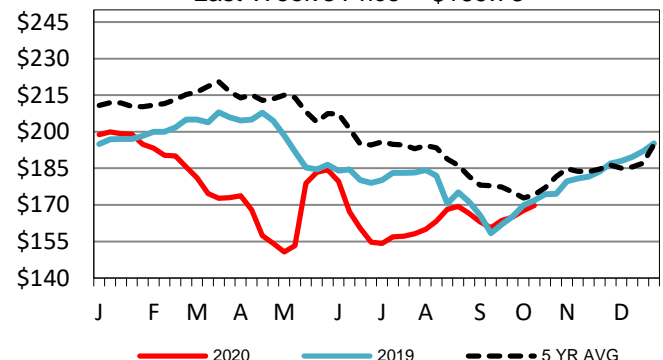
5-Area Live Steer Weighted Average

Last Week's Price = \$108.26



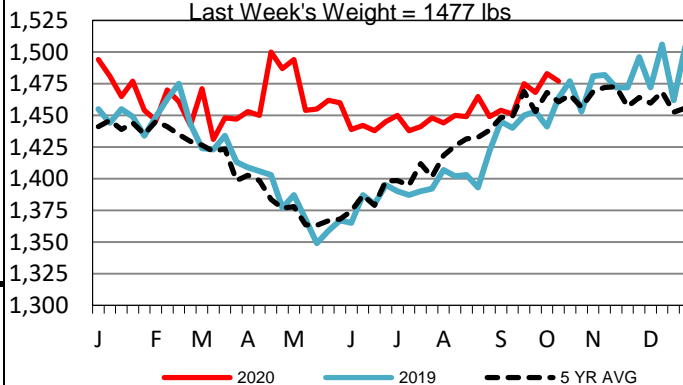
Nebraska Weekly Dressed Steer Weighted Avg

Last Week's Price = \$169.73



5-Area Negotiated Cash Live Steer Weights

Last Week's Weight = 1477 lbs



USDA Livestock, Poultry and Grain Market News

St. Joseph, Missouri

Phone: 816-676-7000

stjoe.lpgmn@ams.usda.gov