

**Daily Direct Steer and Heifer Slaughter Cattle Summary**

For Trade on:

Monday, October 12, 2020

<a href="#">LM_CT100</a>	<b>5-AREA</b>	<a href="#">LM_CT109</a>
<b>Neg. Cash Volume:</b>	5,185	<b>Dressed Formula Vol:</b> 45,589
<b>Live Steer Avg:</b>	\$107.37	<b>Steer/Heifer Avg:</b> \$171.18
<b>Live Heifer Avg:</b>	\$108.54	<b>Dressed Neg. Grid Vol:</b> 5,149
<b>Dressed Steer Avg:</b>	\$169.00	<b>Steer/Heifer Avg:</b> \$167.91
<b>Dressed Heifer Avg:</b>	\$166.79	<b>TOTAL VOLUME:</b> 55,923
<a href="#">LM_CT106</a>	<b>TOTAL WK TO DATE VOLUME:</b>	55,923
<b>Committed:</b>	61,765	<b>Delivered:</b> 74,555

<a href="#">LM_CT118</a>	<b>TX-OK-NM</b>	<a href="#">LM_CT109</a>
<b>Neg. Cash Volume:</b>	1,811	<b>Dressed Formula Vol:</b> 14,678
<b>Live Steer Avg:</b>	\$109.00	<b>Steer/Heifer Avg:</b> \$169.15
<b>Live Heifer Avg:</b>	\$109.00	<b>Dressed Neg. Grid Vol:</b> 0
<b>Dressed Steer Avg:</b>	n/a	<b>Steer/Heifer Avg:</b> \$0.00
<b>Dressed Heifer Avg:</b>	n/a	<b>TOTAL VOLUME:</b> 16,489
<a href="#">LM_CT106</a>	<b>TOTAL WK TO DATE VOLUME:</b>	16,489
<b>Committed:</b>	18,826	<b>Delivered:</b> 22,564

<a href="#">LM_CT121</a>	<b>KANSAS</b>	<a href="#">LM_CT109</a>
<b>Neg. Cash Volume:</b>	0	<b>Dressed Formula Vol:</b> 20,208
<b>Live Steer Avg:</b>	n/a	<b>Steer/Heifer Avg:</b> \$171.79
<b>Live Heifer Avg:</b>	n/a	<b>Dressed Neg. Grid Vol:</b> 1,812
<b>Dressed Steer Avg:</b>	n/a	<b>Steer/Heifer Avg:</b> \$169.10
<b>Dressed Heifer Avg:</b>	n/a	<b>TOTAL VOLUME:</b> 22,020
<a href="#">LM_CT106</a>	<b>TOTAL WK TO DATE VOLUME:</b>	22,020
<b>Committed:</b>	17,053	<b>Delivered:</b> 17,833

<a href="#">LM_CT124</a>	<b>NEBRASKA</b>	<a href="#">LM_CT109</a>
<b>Neg. Cash Volume:</b>	152	<b>Dressed Formula Vol:</b> 8,468
<b>Live Steer Avg:</b>	n/a	<b>Steer/Heifer Avg:</b> \$173.10
<b>Live Heifer Avg:</b>	n/a	<b>Dressed Neg. Grid Vol:</b> 1,691
<b>Dressed Steer Avg:</b>	\$169.00	<b>Steer/Heifer Avg:</b> \$168.24
<b>Dressed Heifer Avg:</b>	n/a	<b>TOTAL VOLUME:</b> 10,311
<a href="#">LM_CT106</a>	<b>TOTAL WK TO DATE VOLUME:</b>	10,311
<b>Committed:</b>	11,915	<b>Delivered:</b> 16,915

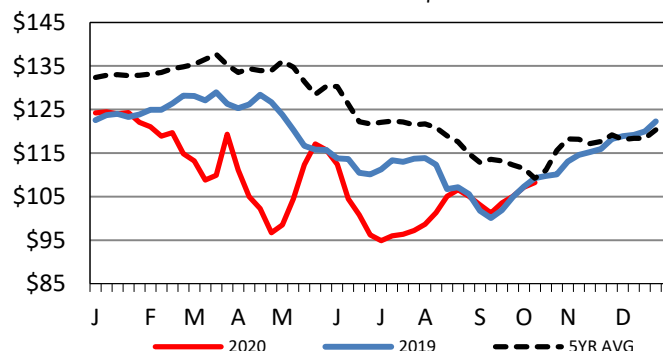
<a href="#">LM_CT134</a>	<b>COLORADO</b>	<a href="#">LM_CT109</a>
<b>Neg. Cash Volume:</b>	0	<b>Dressed Formula Vol:</b> 768
<b>Live Steer Avg:</b>	n/a	<b>Steer/Heifer Avg:</b> \$176.20
<b>Live Heifer Avg:</b>	n/a	<b>Dressed Neg. Grid Vol:</b> 1,113
<b>Dressed Steer Avg:</b>	n/a	<b>Steer/Heifer Avg:</b> \$166.62
<b>Dressed Heifer Avg:</b>	n/a	<b>TOTAL VOLUME:</b> 1,881
<a href="#">LM_CT106</a>	<b>TOTAL WK TO DATE VOLUME:</b>	1,881
<b>Committed:</b>	865	<b>Delivered:</b> 6,822

<a href="#">LM_CT137</a>	<b>IA-MN</b>	<a href="#">LM_CT109</a>
<b>Neg. Cash Volume:</b>	3,222	<b>Dressed Formula Vol:</b> 1,670
<b>Live Steer Avg:</b>	\$107.00	<b>Steer/Heifer Avg:</b> \$169.79
<b>Live Heifer Avg:</b>	\$107.00	<b>Dressed Neg. Grid Vol:</b> 533
<b>Dressed Steer Avg:</b>	n/a	<b>Steer/Heifer Avg:</b> \$165.48
<b>Dressed Heifer Avg:</b>	\$166.79	<b>TOTAL VOLUME:</b> 5,425
<a href="#">LM_CT106</a>	<b>TOTAL WK TO DATE VOLUME:</b>	5,425
<b>Committed:</b>	13,106	<b>Delivered:</b> 10,421

On Monday cash trading in Texas Panhandle and the Western Cornbelt was limited on very light demand. A few live trades moved at 109.00 in the Texas Panhandle and 107.00 in the Western Cornbelt. In Nebraska cash trading was mostly inactive on very light demand. In Kansas cash trading was at a standstill. Last week in the Southern Plains, live moved at 109.00. Last week in Nebraska live moved mostly at 108.00 and dressed moved at 170.00. Last week in the Western Cornbelt live traded from 107.00-108.00, and dressed moved from 169.00-170.00.

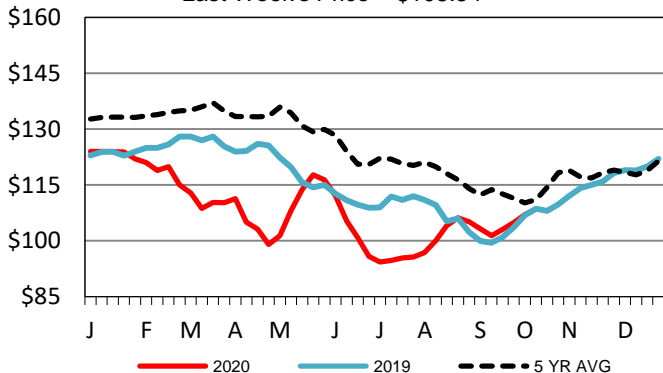
**5-Area Live Steer Weighted Average**

Last Week's Price = \$108.26



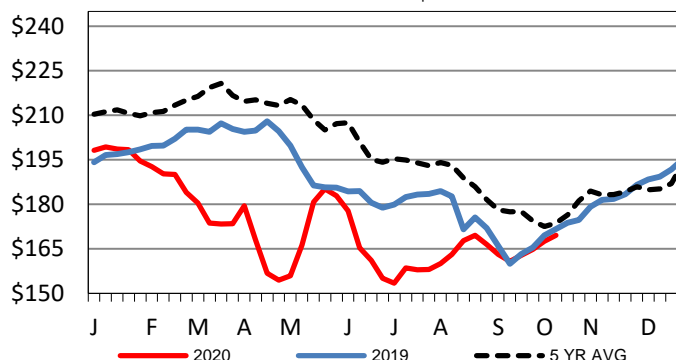
**Kansas Weekly Live Steer Weighted Average**

Last Week's Price = \$108.54



**Iowa-Minnesota Wkly Dressed Steer Wtd Avg**

Last Week's Price = \$169.54



**USDA Livestock, Poultry and Grain Market News**

St. Joseph, Missouri

Phone: 816-676-7000

[stjoe.lpgmn@ams.usda.gov](mailto:stjoe.lpgmn@ams.usda.gov)