

Daily Direct Steer and Heifer Slaughter Cattle Summary

For Trade on:

Tuesday, October 06, 2020

LM_CT100	5-AREA	LM_CT109
Neg. Cash Volume:	1,009	Dressed Formula Vol: 31,342
Live Steer Avg:	\$107.00	Steer/Heifer Avg: \$169.90
Live Heifer Avg:	n/a	Dressed Neg. Grid Vol: 4,474
Dressed Steer Avg:	n/a	Steer/Heifer Avg: \$163.96
Dressed Heifer Avg:	n/a	TOTAL VOLUME: 36,825
LM_CT106	TOTAL WK TO DATE VOLUME:	83,048
Committed:	46,404	Delivered: 64,649

LM_CT118	TX-OK-NM	LM_CT109
Neg. Cash Volume:	0	Dressed Formula Vol: 7,240
Live Steer Avg:	n/a	Steer/Heifer Avg: \$167.84
Live Heifer Avg:	n/a	Dressed Neg. Grid Vol: 278
Dressed Steer Avg:	n/a	Steer/Heifer Avg: \$164.36
Dressed Heifer Avg:	n/a	TOTAL VOLUME: 7,518
LM_CT106	TOTAL WK TO DATE VOLUME:	18,894
Committed:	14,269	Delivered: 16,418

LM_CT121	KANSAS	LM_CT109
Neg. Cash Volume:	0	Dressed Formula Vol: 10,497
Live Steer Avg:	n/a	Steer/Heifer Avg: \$167.90
Live Heifer Avg:	n/a	Dressed Neg. Grid Vol: 655
Dressed Steer Avg:	n/a	Steer/Heifer Avg: \$165.19
Dressed Heifer Avg:	n/a	TOTAL VOLUME: 11,152
LM_CT106	TOTAL WK TO DATE VOLUME:	32,989
Committed:	18,987	Delivered: 19,413

LM_CT124	NEBRASKA	LM_CT109
Neg. Cash Volume:	0	Dressed Formula Vol: 5,937
Live Steer Avg:	n/a	Steer/Heifer Avg: \$169.89
Live Heifer Avg:	n/a	Dressed Neg. Grid Vol: 1,530
Dressed Steer Avg:	n/a	Steer/Heifer Avg: \$162.62
Dressed Heifer Avg:	n/a	TOTAL VOLUME: 7,467
LM_CT106	TOTAL WK TO DATE VOLUME:	16,840
Committed:	5,057	Delivered: 16,460

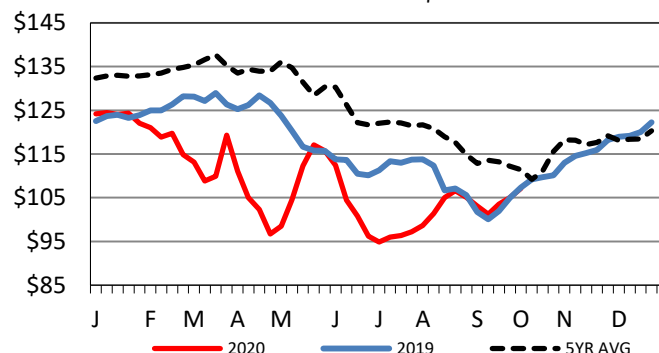
LM_CT134	COLORADO	LM_CT109
Neg. Cash Volume:	0	Dressed Formula Vol: 5,222
Live Steer Avg:	n/a	Steer/Heifer Avg: \$176.50
Live Heifer Avg:	n/a	Dressed Neg. Grid Vol: 1,325
Dressed Steer Avg:	n/a	Steer/Heifer Avg: \$164.56
Dressed Heifer Avg:	n/a	TOTAL VOLUME: 6,547
LM_CT106	TOTAL WK TO DATE VOLUME:	7,407
Committed:	2,482	Delivered: 4,906

LM_CT137	IA-MN	LM_CT109
Neg. Cash Volume:	1,009	Dressed Formula Vol: 2,605
Live Steer Avg:	\$107.00	Steer/Heifer Avg: \$171.48
Live Heifer Avg:	n/a	Dressed Neg. Grid Vol: 759
Dressed Steer Avg:	n/a	Steer/Heifer Avg: \$165.04
Dressed Heifer Avg:	n/a	TOTAL VOLUME: 4,373
LM_CT106	TOTAL WK TO DATE VOLUME:	7,491
Committed:	5,609	Delivered: 7,452

On Tuesday negotiated cash trading was at a standstill in the Southern Plains and Nebraska. In the Western Cornbelt negotiated cash trading was mostly inactive on very light demand. Not enough purchases for a market trend. Last week in the 5 Area feeding regions live purchases moved mostly at 107.00. For the prior week in Nebraska dressed purchases moved at 168.00. In the Western Cornbelt dressed purchases moved from 167.00-168.00 for the previous week.

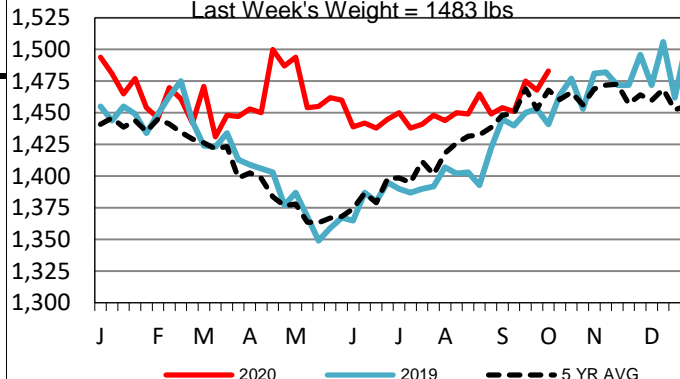
5-Area Live Steer Weighted Average

Last Week's Price = \$107.12



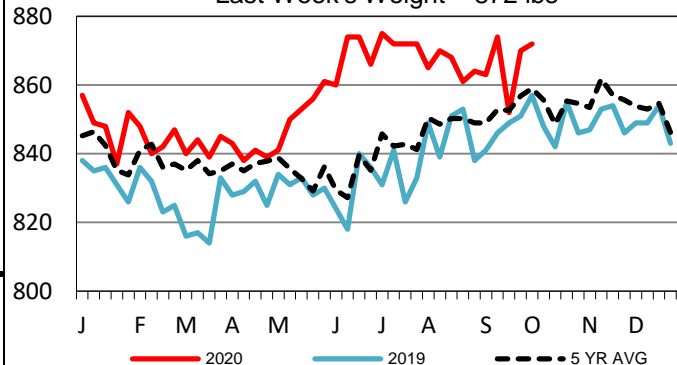
5-Area Negotiated Cash Live Steer Weights

Last Week's Weight = 1483 lbs



TX-OK-NM Formula Carcass Weights

Last Week's Weight = 872 lbs



USDA Livestock, Poultry and Grain Market News

St. Joseph, Missouri

Phone: 816-676-7000

stjoe.lpgmn@ams.usda.gov