

Daily Direct Steer and Heifer Slaughter Cattle Summary

For Trade on:

Tuesday, September 29, 2020

LM_CT100	5-AREA	LM_CT109
Neg. Cash Volume:	587	Dressed Formula Vol: 28,578
Live Steer Avg:	\$104.31	Steer/Heifer Avg: \$169.45
Live Heifer Avg:	n/a	Dressed Neg. Grid Vol: 1,613
Dressed Steer Avg:	n/a	Steer/Heifer Avg: \$163.27
Dressed Heifer Avg:	n/a	TOTAL VOLUME: 30,778
LM_CT106	TOTAL WK TO DATE VOLUME:	80,754
Committed:	88,527	Delivered: 71,213

LM_CT118	TX-OK-NM	LM_CT109
Neg. Cash Volume:	0	Dressed Formula Vol: 8,124
Live Steer Avg:	n/a	Steer/Heifer Avg: \$165.49
Live Heifer Avg:	n/a	Dressed Neg. Grid Vol: 0
Dressed Steer Avg:	n/a	Steer/Heifer Avg: \$0.00
Dressed Heifer Avg:	n/a	TOTAL VOLUME: 8,124
LM_CT106	TOTAL WK TO DATE VOLUME:	21,403
Committed:	35,199	Delivered: 18,127

LM_CT121	KANSAS	LM_CT109
Neg. Cash Volume:	0	Dressed Formula Vol: 5,707
Live Steer Avg:	n/a	Steer/Heifer Avg: \$166.19
Live Heifer Avg:	n/a	Dressed Neg. Grid Vol: 449
Dressed Steer Avg:	n/a	Steer/Heifer Avg: \$163.57
Dressed Heifer Avg:	n/a	TOTAL VOLUME: 6,156
LM_CT106	TOTAL WK TO DATE VOLUME:	27,540
Committed:	22,520	Delivered: 18,452

LM_CT124	NEBRASKA	LM_CT109
Neg. Cash Volume:	40	Dressed Formula Vol: 4,917
Live Steer Avg:	\$106.00	Steer/Heifer Avg: \$174.99
Live Heifer Avg:	n/a	Dressed Neg. Grid Vol: 861
Dressed Steer Avg:	n/a	Steer/Heifer Avg: \$162.73
Dressed Heifer Avg:	n/a	TOTAL VOLUME: 5,818
LM_CT106	TOTAL WK TO DATE VOLUME:	13,424
Committed:	13,375	Delivered: 18,087

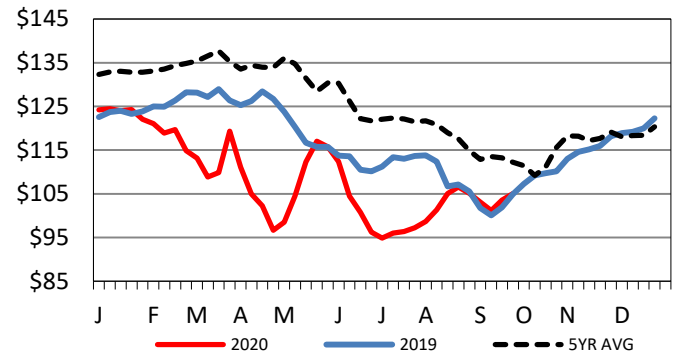
LM_CT134	COLORADO	LM_CT109
Neg. Cash Volume:	0	Dressed Formula Vol: 7,644
Live Steer Avg:	n/a	Steer/Heifer Avg: \$173.42
Live Heifer Avg:	n/a	Dressed Neg. Grid Vol: 40
Dressed Steer Avg:	n/a	Steer/Heifer Avg: \$163.40
Dressed Heifer Avg:	n/a	TOTAL VOLUME: 7,684
LM_CT106	TOTAL WK TO DATE VOLUME:	12,189
Committed:	2,163	Delivered: 8,459

LM_CT137	IA-MN	LM_CT109
Neg. Cash Volume:	547	Dressed Formula Vol: 2,186
Live Steer Avg:	\$104.18	Steer/Heifer Avg: \$166.43
Live Heifer Avg:	n/a	Dressed Neg. Grid Vol: 263
Dressed Steer Avg:	n/a	Steer/Heifer Avg: \$164.50
Dressed Heifer Avg:	n/a	TOTAL VOLUME: 2,996
LM_CT106	TOTAL WK TO DATE VOLUME:	6,436
Committed:	15,270	Delivered: 8,088

For Tuesday negotiated cash trading was at a standstill in the Southern Plains. In Nebraska and the Western Cornbelt negotiated cash trading was mostly inactive on very light demand. Not enough purchases for a market trend. Last week in all major feeding regions live purchases moved at 105.00. In Nebraska and Western Cornbelt dressed purchases moved at 165.00.

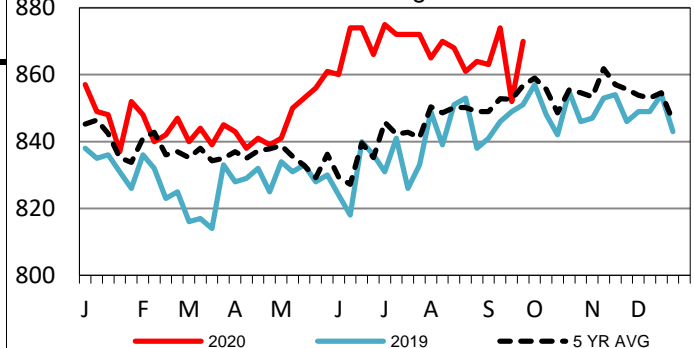
5-Area Live Steer Weighted Average

Last Week's Price = \$105.05



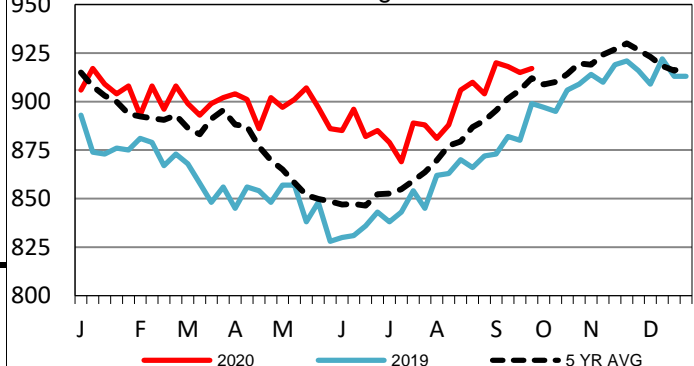
TX-OK-NM Formula Carcass Weights

Last Week's Weight = 870 lbs



Nebraska Formula Carcass Weights

Last Week's Weight = 917 lbs



USDA Livestock, Poultry and Grain Market News

St. Joseph, Missouri

Phone: 816-676-7000

stjoe.lpgmn@ams.usda.gov