

## Daily Direct Steer and Heifer Slaughter Cattle Summary

For Trade on:

Friday, September 25, 2020

<a href="#">LM_CT100</a>	<b>5-AREA</b>	<a href="#">LM_CT109</a>
<b>Neg. Cash Volume:</b>	13,336	<b>Dressed Formula Vol:</b> 35,174
<b>Live Steer Avg:</b>	\$105.25	<b>Steer/Heifer Avg:</b> \$165.92
<b>Live Heifer Avg:</b>	\$105.43	<b>Dressed Neg. Grid Vol:</b> 2,716
<b>Dressed Steer Avg:</b>	\$164.98	<b>Steer/Heifer Avg:</b> \$164.05
<b>Dressed Heifer Avg:</b>	\$164.49	<b>TOTAL VOLUME:</b> 51,226
<a href="#">LM_CT106</a>	<b>TOTAL WK TO DATE VOLUME:</b>	<b>299,950</b>
<b>Committed:</b>	<b>68,342</b>	<b>Delivered:</b> 103,920

<a href="#">LM_CT118</a>	<b>TX-OK-NM</b>	<a href="#">LM_CT109</a>
<b>Neg. Cash Volume:</b>	1,565	<b>Dressed Formula Vol:</b> 6,166
<b>Live Steer Avg:</b>	\$105.00	<b>Steer/Heifer Avg:</b> \$165.45
<b>Live Heifer Avg:</b>	\$104.59	<b>Dressed Neg. Grid Vol:</b> 320
<b>Dressed Steer Avg:</b>	n/a	<b>Steer/Heifer Avg:</b> \$160.19
<b>Dressed Heifer Avg:</b>	n/a	<b>TOTAL VOLUME:</b> 8,051
<a href="#">LM_CT106</a>	<b>TOTAL WK TO DATE VOLUME:</b>	<b>62,523</b>
<b>Committed:</b>	<b>11,404</b>	<b>Delivered:</b> 25,837

<a href="#">LM_CT121</a>	<b>KANSAS</b>	<a href="#">LM_CT109</a>
<b>Neg. Cash Volume:</b>	1,838	<b>Dressed Formula Vol:</b> 17,839
<b>Live Steer Avg:</b>	\$105.00	<b>Steer/Heifer Avg:</b> \$165.29
<b>Live Heifer Avg:</b>	\$105.00	<b>Dressed Neg. Grid Vol:</b> 0
<b>Dressed Steer Avg:</b>	\$165.00	<b>Steer/Heifer Avg:</b> \$0.00
<b>Dressed Heifer Avg:</b>	\$164.00	<b>TOTAL VOLUME:</b> 19,677
<a href="#">LM_CT106</a>	<b>TOTAL WK TO DATE VOLUME:</b>	<b>105,132</b>
<b>Committed:</b>	<b>18,232</b>	<b>Delivered:</b> 28,197

<a href="#">LM_CT124</a>	<b>NEBRASKA</b>	<a href="#">LM_CT109</a>
<b>Neg. Cash Volume:</b>	3,722	<b>Dressed Formula Vol:</b> 7,472
<b>Live Steer Avg:</b>	\$105.00	<b>Steer/Heifer Avg:</b> \$168.01
<b>Live Heifer Avg:</b>	\$105.00	<b>Dressed Neg. Grid Vol:</b> 1,108
<b>Dressed Steer Avg:</b>	\$165.00	<b>Steer/Heifer Avg:</b> \$163.82
<b>Dressed Heifer Avg:</b>	\$165.00	<b>TOTAL VOLUME:</b> 12,302
<a href="#">LM_CT106</a>	<b>TOTAL WK TO DATE VOLUME:</b>	<b>66,325</b>
<b>Committed:</b>	<b>19,785</b>	<b>Delivered:</b> 26,337

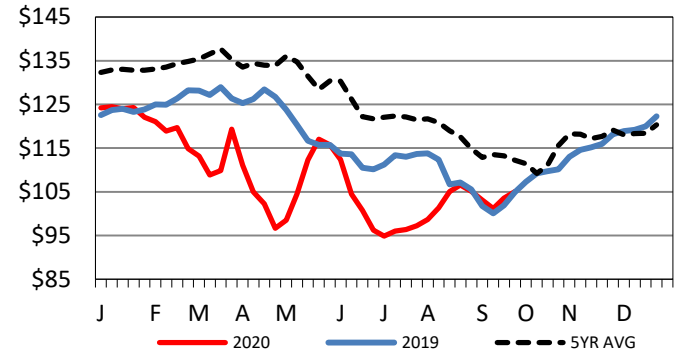
<a href="#">LM_CT134</a>	<b>COLORADO</b>	<a href="#">LM_CT109</a>
<b>Neg. Cash Volume:</b>	0	<b>Dressed Formula Vol:</b> 964
<b>Live Steer Avg:</b>	n/a	<b>Steer/Heifer Avg:</b> \$170.09
<b>Live Heifer Avg:</b>	n/a	<b>Dressed Neg. Grid Vol:</b> 581
<b>Dressed Steer Avg:</b>	n/a	<b>Steer/Heifer Avg:</b> \$162.48
<b>Dressed Heifer Avg:</b>	n/a	<b>TOTAL VOLUME:</b> 1,545
<a href="#">LM_CT106</a>	<b>TOTAL WK TO DATE VOLUME:</b>	<b>15,090</b>
<b>Committed:</b>	<b>9,280</b>	<b>Delivered:</b> 9,224

<a href="#">LM_CT137</a>	<b>IA-MN</b>	<a href="#">LM_CT109</a>
<b>Neg. Cash Volume:</b>	6,211	<b>Dressed Formula Vol:</b> 2,994
<b>Live Steer Avg:</b>	\$105.50	<b>Steer/Heifer Avg:</b> \$164.26
<b>Live Heifer Avg:</b>	\$105.67	<b>Dressed Neg. Grid Vol:</b> 707
<b>Dressed Steer Avg:</b>	\$164.93	<b>Steer/Heifer Avg:</b> \$167.43
<b>Dressed Heifer Avg:</b>	\$164.93	<b>TOTAL VOLUME:</b> 9,912
<a href="#">LM_CT106</a>	<b>TOTAL WK TO DATE VOLUME:</b>	<b>52,219</b>
<b>Committed:</b>	<b>9,641</b>	<b>Delivered:</b> 14,325

For Friday negotiated cash trading was limited on light demand in the major feeding regions. Not enough purchases in any price range for a full market trend. Thursday was the last fully reported market in any region. In the 5 Area feeding region live purchases moved mostly at 105.00, and in Nebraska and Western Cornbelt dressed purchases moved mostly at 165.00.

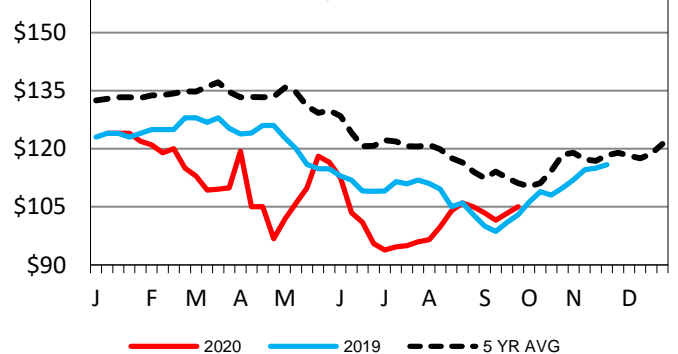
## 5-Area Live Steer Weighted Average

Last Week's Price = \$105.05



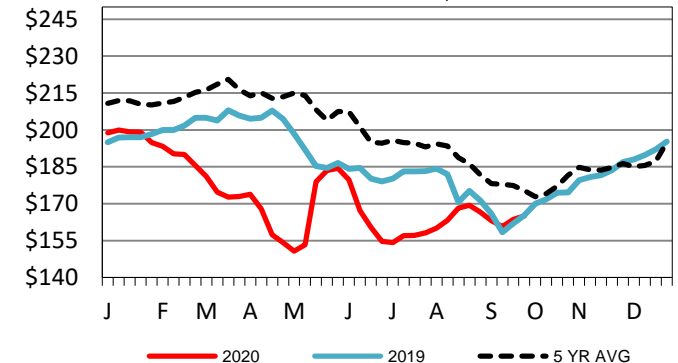
## TX-OK-NM Wkly Live Steer Wtd Avg

Last week's price = \$105.00



## Nebraska Weekly Dressed Steer Weighted Avg

Last Week's Price = \$164.96



## USDA Livestock, Poultry and Grain Market News

St. Joseph, Missouri

Phone: 816-676-7000

[stjoe.lpgmn@ams.usda.gov](mailto:stjoe.lpgmn@ams.usda.gov)