

## Daily Direct Steer and Heifer Slaughter Cattle Summary

For Trade on:

Wednesday, September 23, 2020

<a href="#">LM_CT100</a>	<b>5-AREA</b>	<a href="#">LM_CT109</a>
<b>Neg. Cash Volume:</b>	4,223	<b>Dressed Formula Vol:</b> 21,741
Live Steer Avg:	\$104.04	Steer/Heifer Avg: \$165.91
Live Heifer Avg:	\$104.24	<b>Dressed Neg. Grid Vol:</b> 1,539
Dressed Steer Avg:	\$164.22	Steer/Heifer Avg: \$164.59
Dressed Heifer Avg:	\$163.14	<b>TOTAL VOLUME:</b> 27,503
<a href="#">LM_CT106</a>	<b>TOTAL WK TO DATE VOLUME:</b>	128,610
<b>Committed:</b>	87,098	<b>Delivered:</b> 67,694

<a href="#">LM_CT118</a>	<b>TX-OK-NM</b>	<a href="#">LM_CT109</a>
<b>Neg. Cash Volume:</b>	354	<b>Dressed Formula Vol:</b> 5,886
Live Steer Avg:	n/a	Steer/Heifer Avg: \$164.23
Live Heifer Avg:	\$104.10	<b>Dressed Neg. Grid Vol:</b> 0
Dressed Steer Avg:	n/a	Steer/Heifer Avg: \$0.00
Dressed Heifer Avg:	n/a	<b>TOTAL VOLUME:</b> 6,240
<a href="#">LM_CT106</a>	<b>TOTAL WK TO DATE VOLUME:</b>	32,361
<b>Committed:</b>	37,488	<b>Delivered:</b> 18,660

<a href="#">LM_CT121</a>	<b>KANSAS</b>	<a href="#">LM_CT109</a>
<b>Neg. Cash Volume:</b>	71	<b>Dressed Formula Vol:</b> 8,852
Live Steer Avg:	n/a	Steer/Heifer Avg: \$165.21
Live Heifer Avg:	\$104.00	<b>Dressed Neg. Grid Vol:</b> 77
Dressed Steer Avg:	n/a	Steer/Heifer Avg: \$164.01
Dressed Heifer Avg:	\$164.00	<b>TOTAL VOLUME:</b> 9,000
<a href="#">LM_CT106</a>	<b>TOTAL WK TO DATE VOLUME:</b>	52,663
<b>Committed:</b>	26,574	<b>Delivered:</b> 18,541

<a href="#">LM_CT124</a>	<b>NEBRASKA</b>	<a href="#">LM_CT109</a>
<b>Neg. Cash Volume:</b>	1,799	<b>Dressed Formula Vol:</b> 4,050
Live Steer Avg:	\$104.25	Steer/Heifer Avg: \$168.82
Live Heifer Avg:	\$104.39	<b>Dressed Neg. Grid Vol:</b> 422
Dressed Steer Avg:	\$164.70	Steer/Heifer Avg: \$163.60
Dressed Heifer Avg:	n/a	<b>TOTAL VOLUME:</b> 6,271
<a href="#">LM_CT106</a>	<b>TOTAL WK TO DATE VOLUME:</b>	23,272
<b>Committed:</b>	7,802	<b>Delivered:</b> 14,048

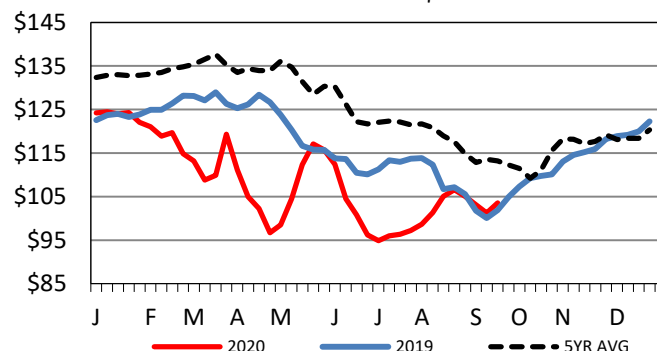
<a href="#">LM_CT134</a>	<b>COLORADO</b>	<a href="#">LM_CT109</a>
<b>Neg. Cash Volume:</b>	0	<b>Dressed Formula Vol:</b> 1,912
Live Steer Avg:	n/a	Steer/Heifer Avg: \$167.33
Live Heifer Avg:	n/a	<b>Dressed Neg. Grid Vol:</b> 0
Dressed Steer Avg:	n/a	Steer/Heifer Avg: \$0.00
Dressed Heifer Avg:	n/a	<b>TOTAL VOLUME:</b> 1,912
<a href="#">LM_CT106</a>	<b>TOTAL WK TO DATE VOLUME:</b>	8,191
<b>Committed:</b>	7,805	<b>Delivered:</b> 7,496

<a href="#">LM_CT137</a>	<b>IA-MN</b>	<a href="#">LM_CT109</a>
<b>Neg. Cash Volume:</b>	1,999	<b>Dressed Formula Vol:</b> 1,311
Live Steer Avg:	\$103.95	Steer/Heifer Avg: \$168.00
Live Heifer Avg:	\$104.00	<b>Dressed Neg. Grid Vol:</b> 1,069
Dressed Steer Avg:	\$163.59	Steer/Heifer Avg: \$164.98
Dressed Heifer Avg:	\$163.14	<b>TOTAL VOLUME:</b> 4,379
<a href="#">LM_CT106</a>	<b>TOTAL WK TO DATE VOLUME:</b>	12,699
<b>Committed:</b>	7,429	<b>Delivered:</b> 8,949

For Wednesday negotiated cash trade was very limited on light demand in all feeding regions. Not enough purchases in any region for an adequate market trend. The latest established market in any region was for the prior week. In the Texas Panhandle live purchases moved from 103.00-103.50. In Kansas live purchases moved at 103.00. In Nebraska live purchases moved from 103.00-103.50 with dressed purchases from 163.00-164.00. In the Western Cornbelt live purchases moved from 103.00-105.00 and dressed purchases from 162.00-164.00.

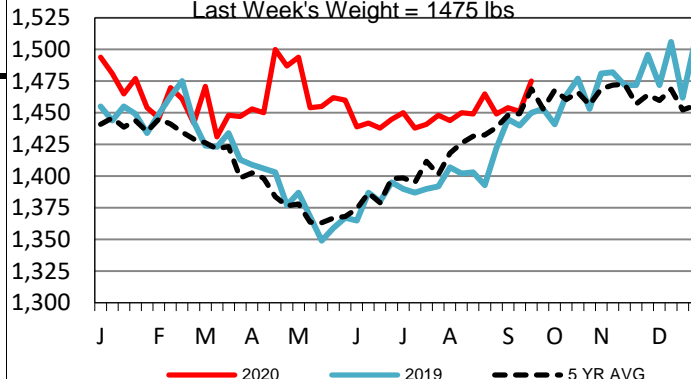
## 5-Area Live Steer Weighted Average

Last Week's Price = \$103.54



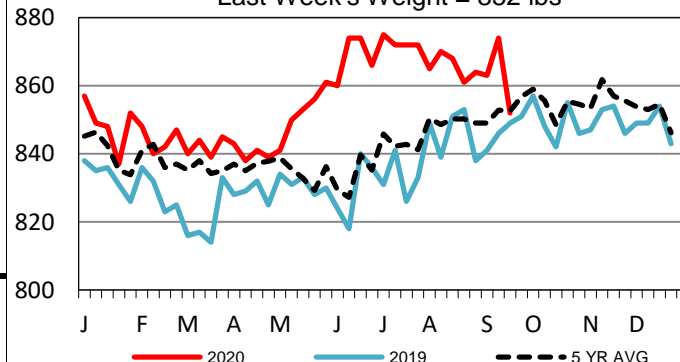
## 5-Area Negotiated Cash Live Steer Weights

Last Week's Weight = 1475 lbs



## TX-OK-NM Formula Carcass Weights

Last Week's Weight = 852 lbs



## USDA Livestock, Poultry and Grain Market News

St. Joseph, Missouri

Phone: 816-676-7000

[stjoe.lpgmn@ams.usda.gov](mailto:stjoe.lpgmn@ams.usda.gov)