

Daily Direct Steer and Heifer Slaughter Cattle Summary

For Trade on:

Friday, September 18, 2020

LM_CT100	5-AREA	LM_CT109
Neg. Cash Volume:	15,146	Dressed Formula Vol: 40,712
Live Steer Avg:	\$103.51	Steer/Heifer Avg: \$163.36
Live Heifer Avg:	\$103.41	Dressed Neg. Grid Vol: 2,093
Dressed Steer Avg:	\$164.78	Steer/Heifer Avg: \$167.52
Dressed Heifer Avg:	\$164.36	TOTAL VOLUME: 57,951
LM_CT106	TOTAL WK TO DATE VOLUME:	326,201
Committed:	71,507	Delivered: 101,191

LM_CT118	TX-OK-NM	LM_CT109
Neg. Cash Volume:	472	Dressed Formula Vol: 10,957
Live Steer Avg:	\$103.00	Steer/Heifer Avg: \$161.97
Live Heifer Avg:	n/a	Dressed Neg. Grid Vol: 0
Dressed Steer Avg:	n/a	Steer/Heifer Avg: \$0.00
Dressed Heifer Avg:	n/a	TOTAL VOLUME: 11,429
LM_CT106	TOTAL WK TO DATE VOLUME:	82,018
Committed:	1,403	Delivered: 26,948

LM_CT121	KANSAS	LM_CT109
Neg. Cash Volume:	1,468	Dressed Formula Vol: 15,301
Live Steer Avg:	\$103.07	Steer/Heifer Avg: \$162.40
Live Heifer Avg:	\$103.00	Dressed Neg. Grid Vol: 0
Dressed Steer Avg:	n/a	Steer/Heifer Avg: \$0.00
Dressed Heifer Avg:	n/a	TOTAL VOLUME: 16,769
LM_CT106	TOTAL WK TO DATE VOLUME:	101,751
Committed:	22,337	Delivered: 23,618

LM_CT124	NEBRASKA	LM_CT109
Neg. Cash Volume:	9,701	Dressed Formula Vol: 5,245
Live Steer Avg:	\$103.83	Steer/Heifer Avg: \$166.70
Live Heifer Avg:	\$103.34	Dressed Neg. Grid Vol: 766
Dressed Steer Avg:	\$164.90	Steer/Heifer Avg: \$170.50
Dressed Heifer Avg:	\$164.63	TOTAL VOLUME: 15,712
LM_CT106	TOTAL WK TO DATE VOLUME:	68,076
Committed:	22,389	Delivered: 21,975

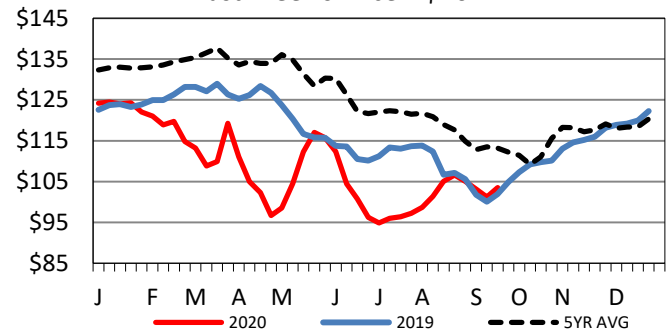
LM_CT134	COLORADO	LM_CT109
Neg. Cash Volume:	0	Dressed Formula Vol: 6,679
Live Steer Avg:	n/a	Steer/Heifer Avg: \$165.76
Live Heifer Avg:	n/a	Dressed Neg. Grid Vol: 226
Dressed Steer Avg:	n/a	Steer/Heifer Avg: \$161.61
Dressed Heifer Avg:	n/a	TOTAL VOLUME: 6,905
LM_CT106	TOTAL WK TO DATE VOLUME:	28,623
Committed:	13,970	Delivered: 10,188

LM_CT137	IA-MN	LM_CT109
Neg. Cash Volume:	3,505	Dressed Formula Vol: 3,123
Live Steer Avg:	\$103.42	Steer/Heifer Avg: \$162.61
Live Heifer Avg:	\$104.00	Dressed Neg. Grid Vol: 1,101
Dressed Steer Avg:	\$164.01	Steer/Heifer Avg: \$166.65
Dressed Heifer Avg:	\$164.05	TOTAL VOLUME: 7,729
LM_CT106	TOTAL WK TO DATE VOLUME:	47,139
Committed:	11,408	Delivered: 18,462

For Friday in Nebraska and the Western Cornbelt negotiated cash trade was slow on light demand. In Nebraska dressed purchases moved 2.00 higher at 165.00. Thursday live purchase market at 103.50. In the Western Cornbelt dressed purchases moved 1.00 higher at 164.00. Thursday live purchase market from 104.00-105.00. On Friday in the Southern Plains negotiated cash trade was inactive on light demand. Wednesday was last reported market in the Southern Plains. In the Texas Panhandle live purchases moved from 103.00-103.50. In Kansas live purchases moved at 103.00.

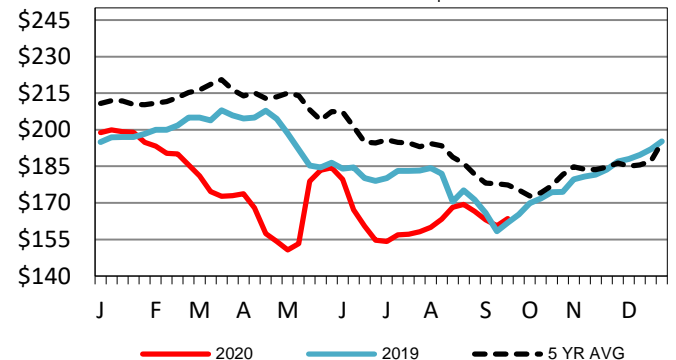
5-Area Live Steer Weighted Average

Last Week's Price = \$101.21



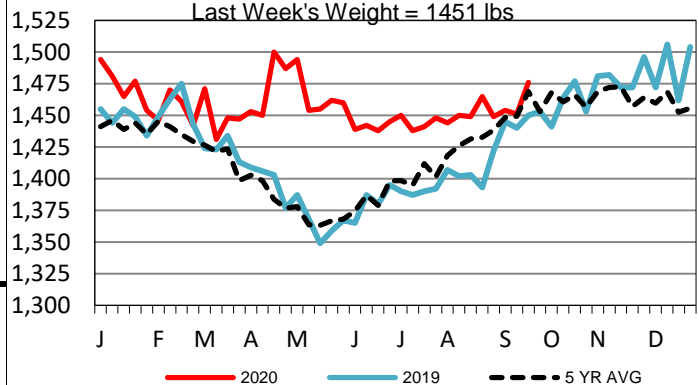
Nebraska Weekly Dressed Steer Weighted Avg

Last Week's Price = \$160.64



5-Area Negotiated Cash Live Steer Weights

Last Week's Weight = 1451 lbs



USDA Livestock, Poultry and Grain Market News

St. Joseph, Missouri

Phone: 816-676-7000

stjoe.lpgmn@ams.usda.gov