

Daily Direct Steer and Heifer Slaughter Cattle Summary

For Trade on:

Tuesday, September 15, 2020

| | | |
|----------------------------|---------------------------------|-------------------------------------|
| LM_CT100 | 5-AREA | LM_CT109 |
| Neg. Cash Volume: | 228 | Dressed Formula Vol: 44,162 |
| Live Steer Avg: | n/a | Steer/Heifer Avg: \$166.51 |
| Live Heifer Avg: | \$103.00 | Dressed Neg. Grid Vol: 3,530 |
| Dressed Steer Avg: | n/a | Steer/Heifer Avg: \$169.34 |
| Dressed Heifer Avg: | n/a | TOTAL VOLUME: 47,920 |
| LM_CT106 | TOTAL WK TO DATE VOLUME: | 125,883 |
| Committed: | 66,324 | Delivered: 68,929 |

| | | |
|----------------------------|---------------------------------|------------------------------------|
| LM_CT118 | TX-OK-NM | LM_CT109 |
| Neg. Cash Volume: | 0 | Dressed Formula Vol: 16,850 |
| Live Steer Avg: | n/a | Steer/Heifer Avg: \$166.08 |
| Live Heifer Avg: | n/a | Dressed Neg. Grid Vol: 154 |
| Dressed Steer Avg: | n/a | Steer/Heifer Avg: \$159.45 |
| Dressed Heifer Avg: | n/a | TOTAL VOLUME: 17,004 |
| LM_CT106 | TOTAL WK TO DATE VOLUME: | 40,371 |
| Committed: | 22,289 | Delivered: 17,961 |

| | | |
|----------------------------|---------------------------------|------------------------------------|
| LM_CT121 | KANSAS | LM_CT109 |
| Neg. Cash Volume: | 0 | Dressed Formula Vol: 14,968 |
| Live Steer Avg: | n/a | Steer/Heifer Avg: \$165.08 |
| Live Heifer Avg: | n/a | Dressed Neg. Grid Vol: 223 |
| Dressed Steer Avg: | n/a | Steer/Heifer Avg: \$167.32 |
| Dressed Heifer Avg: | n/a | TOTAL VOLUME: 15,191 |
| LM_CT106 | TOTAL WK TO DATE VOLUME: | 48,526 |
| Committed: | 23,091 | Delivered: 21,870 |

| | | |
|----------------------------|---------------------------------|-------------------------------------|
| LM_CT124 | NEBRASKA | LM_CT109 |
| Neg. Cash Volume: | 0 | Dressed Formula Vol: 6,237 |
| Live Steer Avg: | n/a | Steer/Heifer Avg: \$170.09 |
| Live Heifer Avg: | n/a | Dressed Neg. Grid Vol: 1,367 |
| Dressed Steer Avg: | n/a | Steer/Heifer Avg: \$170.59 |
| Dressed Heifer Avg: | n/a | TOTAL VOLUME: 7,604 |
| LM_CT106 | TOTAL WK TO DATE VOLUME: | 19,692 |
| Committed: | 8,134 | Delivered: 14,362 |

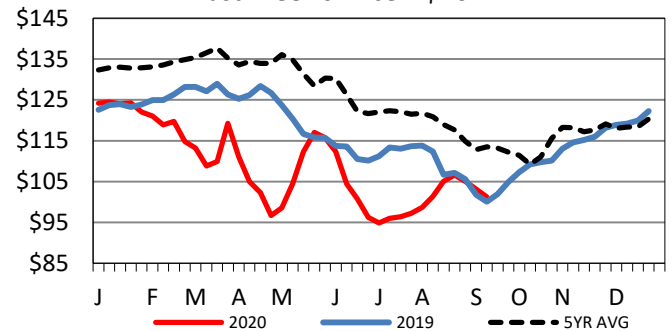
| | | |
|----------------------------|---------------------------------|-----------------------------------|
| LM_CT134 | COLORADO | LM_CT109 |
| Neg. Cash Volume: | 0 | Dressed Formula Vol: 4,460 |
| Live Steer Avg: | n/a | Steer/Heifer Avg: \$168.93 |
| Live Heifer Avg: | n/a | Dressed Neg. Grid Vol: 597 |
| Dressed Steer Avg: | n/a | Steer/Heifer Avg: \$173.48 |
| Dressed Heifer Avg: | n/a | TOTAL VOLUME: 5,057 |
| LM_CT106 | TOTAL WK TO DATE VOLUME: | 12,419 |
| Committed: | 6,891 | Delivered: 6,867 |

| | | |
|----------------------------|---------------------------------|-------------------------------------|
| LM_CT137 | IA-MN | LM_CT109 |
| Neg. Cash Volume: | 228 | Dressed Formula Vol: 1,647 |
| Live Steer Avg: | n/a | Steer/Heifer Avg: \$163.83 |
| Live Heifer Avg: | \$103.00 | Dressed Neg. Grid Vol: 1,189 |
| Dressed Steer Avg: | n/a | Steer/Heifer Avg: \$167.48 |
| Dressed Heifer Avg: | n/a | TOTAL VOLUME: 3,064 |
| LM_CT106 | TOTAL WK TO DATE VOLUME: | 5,146 |
| Committed: | 5,919 | Delivered: 7,869 |

For Tuesday negotiated cash trading was at a standstill in the Southern Plains and Nebraska. In the Western Cornbelt negotiated cash trading was inactive on very light demand. Not enough purchases for a market trend. Last week in the Texas Panhandle live purchases moved from 101.00-102.00. For the prior week in Kansas and Nebraska live purchases moved mostly at 101.00 and, in Nebraska, dressed purchases moved from 160.00-161.00. For the previous week in the Western Cornbelt live purchases moved from 100.00-103.00 and dressed purchases moved from 160.00-161.00.

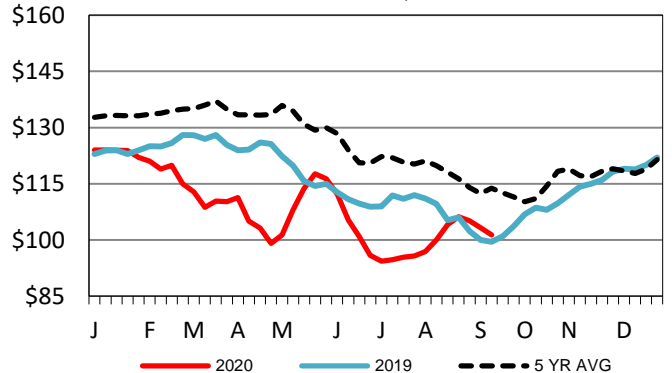
5-Area Live Steer Weighted Average

Last Week's Price = \$101.21



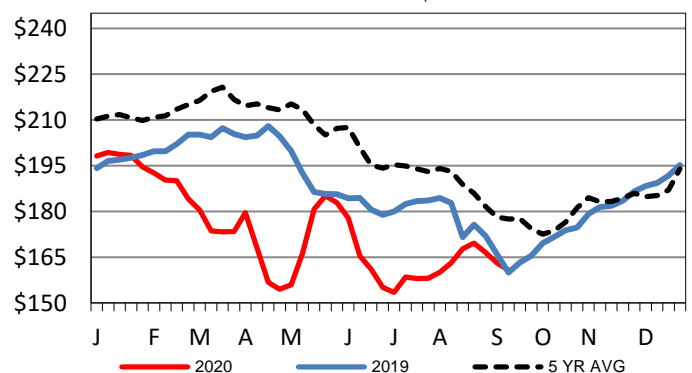
Kansas Weekly Live Steer Weighted Average

Last Week's Price = \$101.34



Iowa-Minnesota Wkly Dressed Steer Wtd Avg

Last Week's Price = \$160.74



USDA Livestock, Poultry and Grain Market News

St. Joseph, Missouri

Phone: 816-676-7000

stjoe.lpgmn@ams.usda.gov