

Daily Direct Steer and Heifer Slaughter Cattle Summary

For Trade on:

Monday, September 14, 2020

LM_CT100	5-AREA	LM_CT109
Neg. Cash Volume:	114	Dressed Formula Vol: 74,094
Live Steer Avg:	n/a	Steer/Heifer Avg: \$165.79
Live Heifer Avg:	n/a	Dressed Neg. Grid Vol: 3,755
Dressed Steer Avg:	n/a	Steer/Heifer Avg: \$168.23
Dressed Heifer Avg:	n/a	TOTAL VOLUME: 77,963
LM_CT106	TOTAL WK TO DATE VOLUME:	77,963
Committed:	59,218	Delivered: 74,326

LM_CT118	TX-OK-NM	LM_CT109
Neg. Cash Volume:	0	Dressed Formula Vol: 23,193
Live Steer Avg:	n/a	Steer/Heifer Avg: \$165.00
Live Heifer Avg:	n/a	Dressed Neg. Grid Vol: 174
Dressed Steer Avg:	n/a	Steer/Heifer Avg: \$167.14
Dressed Heifer Avg:	n/a	TOTAL VOLUME: 23,367
LM_CT106	TOTAL WK TO DATE VOLUME:	23,367
Committed:	10,075	Delivered: 21,833

LM_CT121	KANSAS	LM_CT109
Neg. Cash Volume:	0	Dressed Formula Vol: 32,836
Live Steer Avg:	n/a	Steer/Heifer Avg: \$165.61
Live Heifer Avg:	n/a	Dressed Neg. Grid Vol: 499
Dressed Steer Avg:	n/a	Steer/Heifer Avg: \$167.86
Dressed Heifer Avg:	n/a	TOTAL VOLUME: 33,335
LM_CT106	TOTAL WK TO DATE VOLUME:	33,335
Committed:	14,900	Delivered: 15,774

LM_CT124	NEBRASKA	LM_CT109
Neg. Cash Volume:	0	Dressed Formula Vol: 10,385
Live Steer Avg:	n/a	Steer/Heifer Avg: \$167.08
Live Heifer Avg:	n/a	Dressed Neg. Grid Vol: 1,703
Dressed Steer Avg:	n/a	Steer/Heifer Avg: \$167.46
Dressed Heifer Avg:	n/a	TOTAL VOLUME: 12,088
LM_CT106	TOTAL WK TO DATE VOLUME:	12,088
Committed:	16,782	Delivered: 19,466

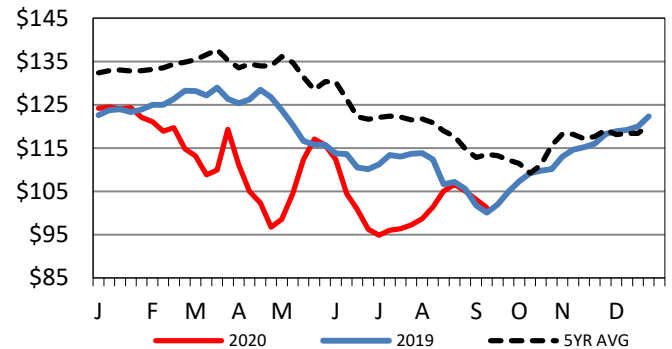
LM_CT134	COLORADO	LM_CT109
Neg. Cash Volume:	0	Dressed Formula Vol: 6,169
Live Steer Avg:	n/a	Steer/Heifer Avg: \$167.63
Live Heifer Avg:	n/a	Dressed Neg. Grid Vol: 1,193
Dressed Steer Avg:	n/a	Steer/Heifer Avg: \$170.10
Dressed Heifer Avg:	n/a	TOTAL VOLUME: 7,362
LM_CT106	TOTAL WK TO DATE VOLUME:	7,362
Committed:	9,942	Delivered: 6,254

LM_CT137	IA-MN	LM_CT109
Neg. Cash Volume:	114	Dressed Formula Vol: 1,714
Live Steer Avg:	n/a	Steer/Heifer Avg: \$165.83
Live Heifer Avg:	n/a	Dressed Neg. Grid Vol: 254
Dressed Steer Avg:	n/a	Steer/Heifer Avg: \$168.78
Dressed Heifer Avg:	n/a	TOTAL VOLUME: 2,082
LM_CT106	TOTAL WK TO DATE VOLUME:	2,082
Committed:	7,519	Delivered: 10,999

For Monday negotiated cash trading was at a standstill in the Southern Plains and Nebraska. In the Western Cornbelt negotiated cash trading was inactive on very light demand. Not enough purchases for a market trend. Last week in the Texas Panhandle live purchases moved from 101.00-102.00. For the prior week in Kansas and Nebraska live purchases moved mostly at 101.00 and, in Nebraska, dressed purchases moved from 160.00-161.00. For the previous week in the Western Cornbelt live purchases moved from 100.00-103.00 and dressed purchases moved from 160.00-161.00.

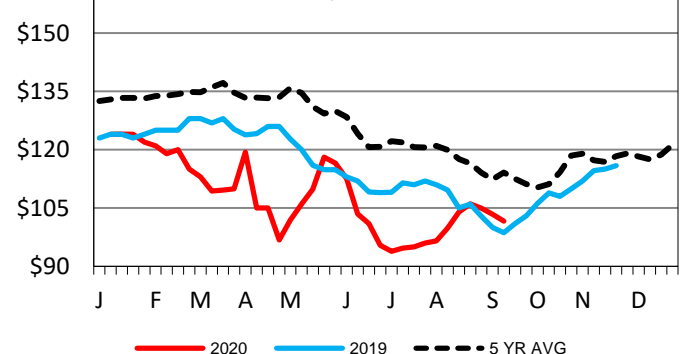
5-Area Live Steer Weighted Average

Last Week's Price = \$101.21



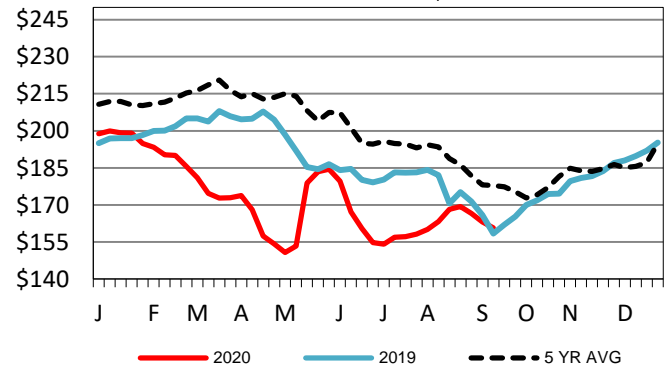
TX-OK-NM Wkly Live Steer Wtd Avg

Last week's price = \$101.59



Nebraska Weekly Dressed Steer Weighted Avg

Last Week's Price = \$160.64



USDA Livestock, Poultry and Grain Market News

St. Joseph, Missouri

Phone: 816-676-7000

stjoe.lpgmn@ams.usda.gov