

## Daily Direct Steer and Heifer Slaughter Cattle Summary

For Trade on:

Thursday, September 10, 2020

<a href="#">LM_CT100</a>	<b>5-AREA</b>	<a href="#">LM_CT109</a>
<b>Neg. Cash Volume:</b>	4,755	<b>Dressed Formula Vol:</b> 38,111
Live Steer Avg:	\$100.85	Steer/Heifer Avg: \$167.44
Live Heifer Avg:	\$101.06	<b>Dressed Neg. Grid Vol:</b> 5,341
Dressed Steer Avg:	\$160.17	Steer/Heifer Avg: \$171.08
Dressed Heifer Avg:	\$160.75	<b>TOTAL VOLUME:</b> 48,207
<a href="#">LM_CT106</a>	<b>TOTAL WK TO DATE VOLUME:</b>	<b>204,220</b>
<b>Committed:</b>	<b>94,411</b>	<b>Delivered:</b> 70,482

<a href="#">LM_CT118</a>	<b>TX-OK-NM</b>	<a href="#">LM_CT109</a>
<b>Neg. Cash Volume:</b>	914	<b>Dressed Formula Vol:</b> 7,418
Live Steer Avg:	\$101.00	Steer/Heifer Avg: \$166.36
Live Heifer Avg:	\$101.00	<b>Dressed Neg. Grid Vol:</b> 0
Dressed Steer Avg:	n/a	Steer/Heifer Avg: \$0.00
Dressed Heifer Avg:	n/a	<b>TOTAL VOLUME:</b> 8,332
<a href="#">LM_CT106</a>	<b>TOTAL WK TO DATE VOLUME:</b>	<b>42,508</b>
<b>Committed:</b>	<b>45,344</b>	<b>Delivered:</b> 18,964

<a href="#">LM_CT121</a>	<b>KANSAS</b>	<a href="#">LM_CT109</a>
<b>Neg. Cash Volume:</b>	249	<b>Dressed Formula Vol:</b> 16,280
Live Steer Avg:	\$101.00	Steer/Heifer Avg: \$167.30
Live Heifer Avg:	\$101.00	<b>Dressed Neg. Grid Vol:</b> 240
Dressed Steer Avg:	n/a	Steer/Heifer Avg: \$170.01
Dressed Heifer Avg:	n/a	<b>TOTAL VOLUME:</b> 16,769
<a href="#">LM_CT106</a>	<b>TOTAL WK TO DATE VOLUME:</b>	<b>65,875</b>
<b>Committed:</b>	<b>20,483</b>	<b>Delivered:</b> 19,140

<a href="#">LM_CT124</a>	<b>NEBRASKA</b>	<a href="#">LM_CT109</a>
<b>Neg. Cash Volume:</b>	857	<b>Dressed Formula Vol:</b> 10,003
Live Steer Avg:	\$101.00	Steer/Heifer Avg: \$168.64
Live Heifer Avg:	na	<b>Dressed Neg. Grid Vol:</b> 2,264
Dressed Steer Avg:	\$160.53	Steer/Heifer Avg: \$171.87
Dressed Heifer Avg:	\$160.00	<b>TOTAL VOLUME:</b> 13,124
<a href="#">LM_CT106</a>	<b>TOTAL WK TO DATE VOLUME:</b>	<b>57,358</b>
<b>Committed:</b>	<b>13,831</b>	<b>Delivered:</b> 17,296

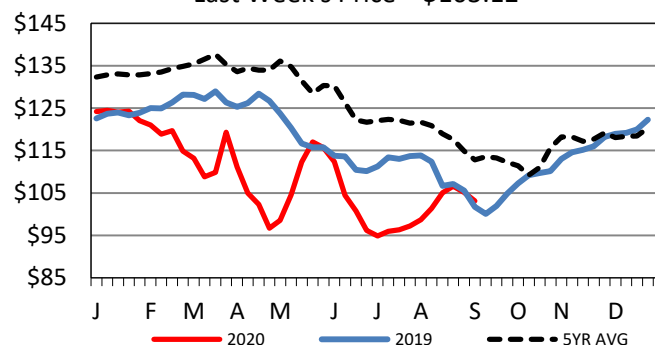
<a href="#">LM_CT134</a>	<b>COLORADO</b>	<a href="#">LM_CT109</a>
<b>Neg. Cash Volume:</b>	0	<b>Dressed Formula Vol:</b> 1,792
Live Steer Avg:	n/a	Steer/Heifer Avg: \$167.46
Live Heifer Avg:	n/a	<b>Dressed Neg. Grid Vol:</b> 747
Dressed Steer Avg:	n/a	Steer/Heifer Avg: \$170.22
Dressed Heifer Avg:	n/a	<b>TOTAL VOLUME:</b> 2,539
<a href="#">LM_CT106</a>	<b>TOTAL WK TO DATE VOLUME:</b>	<b>13,787</b>
<b>Committed:</b>	<b>7,614</b>	<b>Delivered:</b> 7,409

<a href="#">LM_CT137</a>	<b>IA-MN</b>	<a href="#">LM_CT109</a>
<b>Neg. Cash Volume:</b>	2,735	<b>Dressed Formula Vol:</b> 2,655
Live Steer Avg:	\$100.76	Steer/Heifer Avg: \$166.67
Live Heifer Avg:	\$101.33	<b>Dressed Neg. Grid Vol:</b> 2,102
Dressed Steer Avg:	\$160.00	Steer/Heifer Avg: \$167.44
Dressed Heifer Avg:	\$160.84	<b>TOTAL VOLUME:</b> 7,492
<a href="#">LM_CT106</a>	<b>TOTAL WK TO DATE VOLUME:</b>	<b>24,932</b>
<b>Committed:</b>	<b>7,139</b>	<b>Delivered:</b> 7,673

For Thursday negotiated cash trading was limited on light demand in all feeding regions. Not enough purchases for a full market trend. Wednesday was the last fully reported market in all regions. In the Southern Plains live purchases moved at 101.00. In Nebraska live purchases moved at 101.00 and dressed purchases moved from 160.00 to 161.00. In the Western Cornbelt live purchases moved from 100.00 to 101.00 and dressed purchases moved from 160.00 to 161.00.

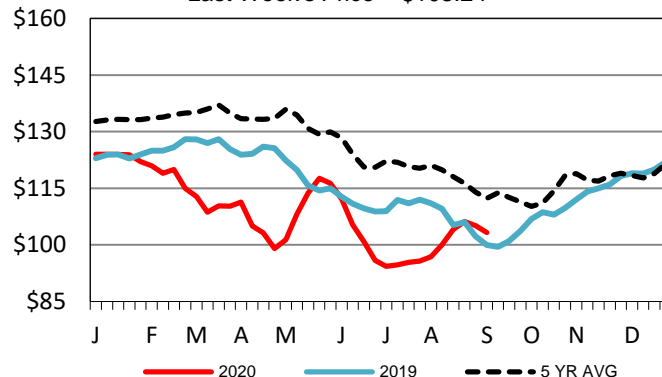
## 5-Area Live Steer Weighted Average

Last Week's Price = \$103.12



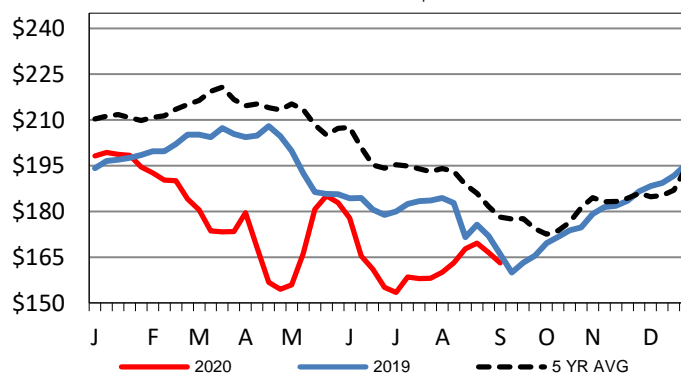
## Kansas Weekly Live Steer Weighted Average

Last Week's Price = \$103.24



## Iowa-Minnesota Wkly Dressed Steer Wtd Avg

Last Week's Price = \$163.09



## USDA Livestock, Poultry and Grain Market News

St. Joseph, Missouri

Phone: 816-676-7000

[stjoe.lpgmn@ams.usda.gov](mailto:stjoe.lpgmn@ams.usda.gov)