

Daily Direct Steer and Heifer Slaughter Cattle Summary

For Trade on:

Wednesday, September 09, 2020

LM_CT100	5-AREA	LM_CT109
Neg. Cash Volume:	47,569	Dressed Formula Vol: 41,238
Live Steer Avg:	\$100.86	Steer/Heifer Avg: \$171.23
Live Heifer Avg:	\$100.90	Dressed Neg. Grid Vol: 3,082
Dressed Steer Avg:	\$160.58	Steer/Heifer Avg: \$169.86
Dressed Heifer Avg:	\$160.30	TOTAL VOLUME: 91,889
LM_CT106	TOTAL WK TO DATE VOLUME:	156,013
Committed:	107,701	Delivered: 70,050

LM_CT118	TX-OK-NM	LM_CT109
Neg. Cash Volume:	2,557	Dressed Formula Vol: 12,723
Live Steer Avg:	\$101.00	Steer/Heifer Avg: \$169.69
Live Heifer Avg:	\$101.00	Dressed Neg. Grid Vol: 148
Dressed Steer Avg:	n/a	Steer/Heifer Avg: \$165.30
Dressed Heifer Avg:	n/a	TOTAL VOLUME: 15,428
LM_CT106	TOTAL WK TO DATE VOLUME:	34,176
Committed:	26,521	Delivered: 19,105

LM_CT121	KANSAS	LM_CT109
Neg. Cash Volume:	9,298	Dressed Formula Vol: 13,210
Live Steer Avg:	\$101.00	Steer/Heifer Avg: \$168.69
Live Heifer Avg:	\$101.00	Dressed Neg. Grid Vol: 126
Dressed Steer Avg:	\$160.00	Steer/Heifer Avg: \$170.00
Dressed Heifer Avg:	\$161.00	TOTAL VOLUME: 22,634
LM_CT106	TOTAL WK TO DATE VOLUME:	49,106
Committed:	29,613	Delivered: 17,304

LM_CT124	NEBRASKA	LM_CT109
Neg. Cash Volume:	25,762	Dressed Formula Vol: 7,064
Live Steer Avg:	\$100.95	Steer/Heifer Avg: \$174.59
Live Heifer Avg:	\$101.00	Dressed Neg. Grid Vol: 462
Dressed Steer Avg:	\$160.85	Steer/Heifer Avg: \$171.45
Dressed Heifer Avg:	\$160.25	TOTAL VOLUME: 33,288
LM_CT106	TOTAL WK TO DATE VOLUME:	44,234
Committed:	31,448	Delivered: 16,960

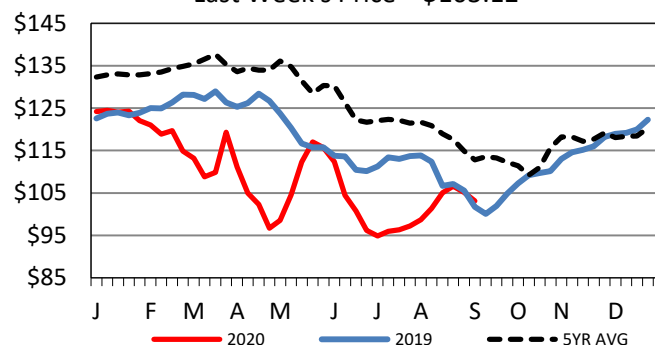
LM_CT134	COLORADO	LM_CT109
Neg. Cash Volume:	0	Dressed Formula Vol: 5,921
Live Steer Avg:	n/a	Steer/Heifer Avg: \$177.01
Live Heifer Avg:	n/a	Dressed Neg. Grid Vol: 2,176
Dressed Steer Avg:	n/a	Steer/Heifer Avg: \$169.90
Dressed Heifer Avg:	n/a	TOTAL VOLUME: 8,097
LM_CT106	TOTAL WK TO DATE VOLUME:	11,248
Committed:	7,741	Delivered: 8,391

LM_CT137	IA-MN	LM_CT109
Neg. Cash Volume:	9,952	Dressed Formula Vol: 2,320
Live Steer Avg:	\$100.49	Steer/Heifer Avg: \$169.18
Live Heifer Avg:	\$100.50	Dressed Neg. Grid Vol: 211
Dressed Steer Avg:	\$160.37	Steer/Heifer Avg: \$170.80
Dressed Heifer Avg:	\$160.33	TOTAL VOLUME: 12,483
LM_CT106	TOTAL WK TO DATE VOLUME:	17,451
Committed:	12,378	Delivered: 8,290

On Wednesday in Kansas and Nebraska cash trading and demand were moderate. In Kansas live purchases were 2.00 lower at 101.00. In Nebraska live purchases were 1.00 to 2.00 lower at 101.00, dressed purchases 2.00 to 3.00 lower from 160.00 to 161.00. On Wednesday in the Texas Panhandle cash trading was limited on light demand. Live purchases 1.00 to 3.00 lower at 101.00. For Wednesday in the Western Cornbelt cash trading was slow on moderate demand. Live purchases 3.00 lower from 100.00 to 101.00, dressed purchases 2.00 to 3.00 lower from 160.00 to 161.00.

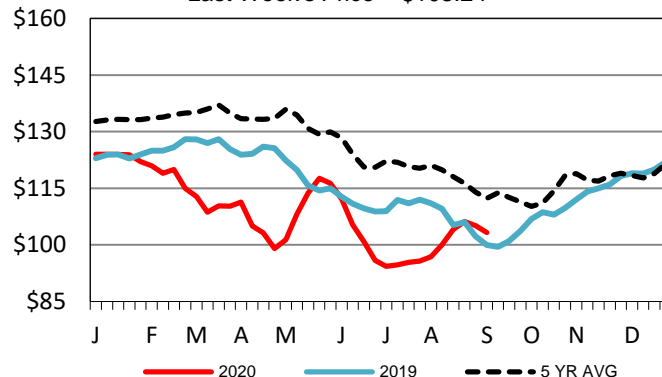
5-Area Live Steer Weighted Average

Last Week's Price = \$103.12



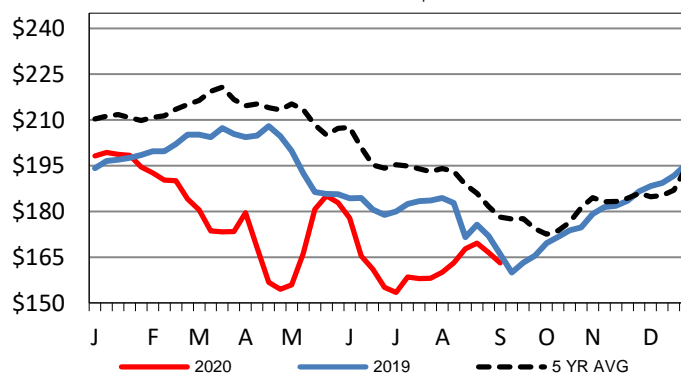
Kansas Weekly Live Steer Weighted Average

Last Week's Price = \$103.24



Iowa-Minnesota Wkly Dressed Steer Wtd Avg

Last Week's Price = \$163.09



USDA Livestock, Poultry and Grain Market News

St. Joseph, Missouri

Phone: 816-676-7000

stjoe.lpgmn@ams.usda.gov