

Daily Direct Steer and Heifer Slaughter Cattle Summary

For Trade on:

Tuesday, September 08, 2020

LM_CT100	5-AREA	LM_CT109
Neg. Cash Volume:	939	Dressed Formula Vol: 60,143
Live Steer Avg:	\$101.00	Steer/Heifer Avg: \$168.91
Live Heifer Avg:	\$101.00	Dressed Neg. Grid Vol: 3,032
Dressed Steer Avg:	\$161.00	Steer/Heifer Avg: \$169.88
Dressed Heifer Avg:	n/a	TOTAL VOLUME: 64,114
LM_CT106	TOTAL WK TO DATE VOLUME:	64,114
Committed:	57,115	Delivered: 67,235

LM_CT118	TX-OK-NM	LM_CT109
Neg. Cash Volume:	0	Dressed Formula Vol: 18,748
Live Steer Avg:	n/a	Steer/Heifer Avg: \$168.37
Live Heifer Avg:	n/a	Dressed Neg. Grid Vol: 0
Dressed Steer Avg:	n/a	Steer/Heifer Avg: \$0.00
Dressed Heifer Avg:	n/a	TOTAL VOLUME: 18,748
LM_CT106	TOTAL WK TO DATE VOLUME:	18,748
Committed:	10,882	Delivered: 19,340

LM_CT121	KANSAS	LM_CT109
Neg. Cash Volume:	0	Dressed Formula Vol: 26,378
Live Steer Avg:	n/a	Steer/Heifer Avg: \$169.00
Live Heifer Avg:	n/a	Dressed Neg. Grid Vol: 94
Dressed Steer Avg:	n/a	Steer/Heifer Avg: \$173.06
Dressed Heifer Avg:	n/a	TOTAL VOLUME: 26,472
LM_CT106	TOTAL WK TO DATE VOLUME:	26,472
Committed:	15,680	Delivered: 19,647

LM_CT124	NEBRASKA	LM_CT109
Neg. Cash Volume:	845	Dressed Formula Vol: 9,284
Live Steer Avg:	\$101.00	Steer/Heifer Avg: \$169.38
Live Heifer Avg:	\$101.00	Dressed Neg. Grid Vol: 817
Dressed Steer Avg:	n/a	Steer/Heifer Avg: \$169.99
Dressed Heifer Avg:	n/a	TOTAL VOLUME: 10,946
LM_CT106	TOTAL WK TO DATE VOLUME:	10,946
Committed:	13,636	Delivered: 14,839

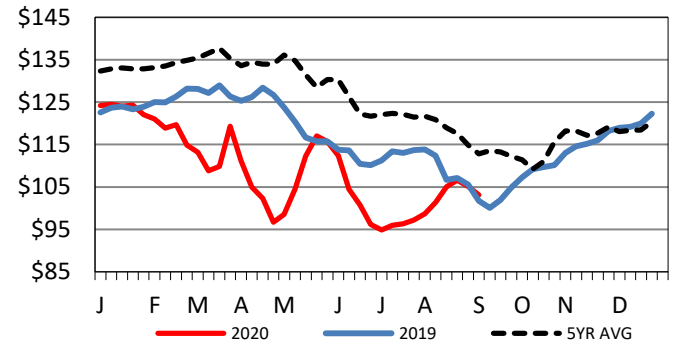
LM_CT134	COLORADO	LM_CT109
Neg. Cash Volume:	0	Dressed Formula Vol: 2,263
Live Steer Avg:	n/a	Steer/Heifer Avg: \$172.17
Live Heifer Avg:	n/a	Dressed Neg. Grid Vol: 888
Dressed Steer Avg:	n/a	Steer/Heifer Avg: \$170.50
Dressed Heifer Avg:	n/a	TOTAL VOLUME: 3,151
LM_CT106	TOTAL WK TO DATE VOLUME:	3,151
Committed:	11,003	Delivered: 6,101

LM_CT137	IA-MN	LM_CT109
Neg. Cash Volume:	97	Dressed Formula Vol: 3,638
Live Steer Avg:	n/a	Steer/Heifer Avg: \$167.92
Live Heifer Avg:	n/a	Dressed Neg. Grid Vol: 1,233
Dressed Steer Avg:	\$161.00	Steer/Heifer Avg: \$169.13
Dressed Heifer Avg:	n/a	TOTAL VOLUME: 4,968
LM_CT106	TOTAL WK TO DATE VOLUME:	4,968
Committed:	5,914	Delivered: 7,308

For Tuesday in Nebraska and Western Cornbelt negotiated cash trading was inactive on very light demand. In the Southern Plains negotiated cash trading was at a standstill. Last week in the Texas Panhandle live purchases moved from 102.00-104.00. In Kansas last week live purchases moved mostly at 103.00. For the prior week in Nebraska live and dressed purchases moved from 102.00-103.00 and 162.00-164.00, respectively. For the previous week in the Western Cornbelt live and dressed purchases moved from mostly 103.00-104.00 and 162.00-164.00, respectively.

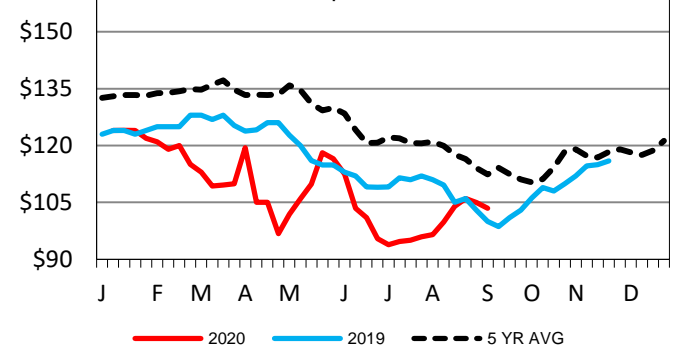
5-Area Live Steer Weighted Average

Last Week's Price = \$103.12



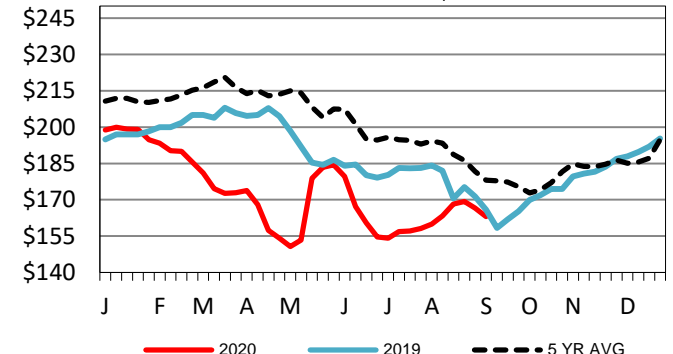
TX-OK-NM Wkly Live Steer Wtd Avg

Last week's price = \$ 103.43



Nebraska Weekly DressedSteer Weighted Avg

Last Week's Price = \$163.06



USDA Livestock, Poultry and Grain Market News

St. Joseph, Missouri

Phone: 816-676-7000

stjoe.lpgmn@ams.usda.gov