

Daily Direct Steer and Heifer Slaughter Cattle Summary

For Trade on:

Wednesday, August 26, 2020

<a href="#">LM_CT100</a>	<b>5-AREA</b>	<a href="#">LM_CT109</a>
<b>Neg. Cash Volume:</b>	49,398	<b>Dressed Formula Vol:</b> 23,654
Live Steer Avg:	\$105.18	Steer/Heifer Avg: \$169.40
Live Heifer Avg:	\$105.06	<b>Dressed Neg. Grid Vol:</b> 1,409
Dressed Steer Avg:	\$166.67	Steer/Heifer Avg: \$169.54
Dressed Heifer Avg:	\$166.72	<b>TOTAL VOLUME:</b> 74,461
<a href="#">LM_CT106</a>	<b>TOTAL WK TO DATE VOLUME:</b>	<b>221,048</b>
<b>Committed:</b>	95,813	<b>Delivered:</b> 74,793

<a href="#">LM_CT118</a>	<b>TX-OK-NM</b>	<a href="#">LM_CT109</a>
<b>Neg. Cash Volume:</b>	553	<b>Dressed Formula Vol:</b> 8,466
Live Steer Avg:	\$105.00	Steer/Heifer Avg: \$168.23
Live Heifer Avg:	\$105.10	<b>Dressed Neg. Grid Vol:</b> 0
Dressed Steer Avg:	N/A	Steer/Heifer Avg: N/A
Dressed Heifer Avg:	N/A	<b>TOTAL VOLUME:</b> 9,019
<a href="#">LM_CT106</a>	<b>TOTAL WK TO DATE VOLUME:</b>	<b>62,661</b>
<b>Committed:</b>	9,643	<b>Delivered:</b> 20,287

<a href="#">LM_CT121</a>	<b>KANSAS</b>	<a href="#">LM_CT109</a>
<b>Neg. Cash Volume:</b>	5,837	<b>Dressed Formula Vol:</b> 8,193
Live Steer Avg:	\$104.89	Steer/Heifer Avg: \$168.27
Live Heifer Avg:	\$105.07	<b>Dressed Neg. Grid Vol:</b> 361
Dressed Steer Avg:	\$167.00	Steer/Heifer Avg: \$167.22
Dressed Heifer Avg:	\$167.00	<b>TOTAL VOLUME:</b> 14,391
<a href="#">LM_CT106</a>	<b>TOTAL WK TO DATE VOLUME:</b>	<b>70,888</b>
<b>Committed:</b>	30,578	<b>Delivered:</b> 20,348

<a href="#">LM_CT124</a>	<b>NEBRASKA</b>	<a href="#">LM_CT109</a>
<b>Neg. Cash Volume:</b>	24,118	<b>Dressed Formula Vol:</b> 4,365
Live Steer Avg:	\$104.86	Steer/Heifer Avg: \$172.05
Live Heifer Avg:	\$105.01	<b>Dressed Neg. Grid Vol:</b> 212
Dressed Steer Avg:	\$166.69	Steer/Heifer Avg: \$171.79
Dressed Heifer Avg:	\$166.85	<b>TOTAL VOLUME:</b> 28,695
<a href="#">LM_CT106</a>	<b>TOTAL WK TO DATE VOLUME:</b>	<b>45,661</b>
<b>Committed:</b>	27,624	<b>Delivered:</b> 17,978

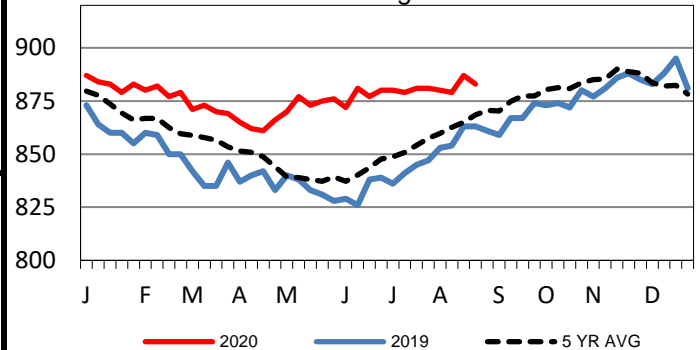
<a href="#">LM_CT134</a>	<b>COLORADO</b>	<a href="#">LM_CT109</a>
<b>Neg. Cash Volume:</b>	0	<b>Dressed Formula Vol:</b> 363
Live Steer Avg:	N/A	Steer/Heifer Avg: \$188.38
Live Heifer Avg:	N/A	<b>Dressed Neg. Grid Vol:</b> 0
Dressed Steer Avg:	N/A	Steer/Heifer Avg: N/A
Dressed Heifer Avg:	N/A	<b>TOTAL VOLUME:</b> 363
<a href="#">LM_CT106</a>	<b>TOTAL WK TO DATE VOLUME:</b>	<b>11,923</b>
<b>Committed:</b>	11,676	<b>Delivered:</b> 7,951

<a href="#">LM_CT137</a>	<b>IA-MN</b>	<a href="#">LM_CT109</a>
<b>Neg. Cash Volume:</b>	18,890	<b>Dressed Formula Vol:</b> 2,267
Live Steer Avg:	\$105.55	Steer/Heifer Avg: \$169.67
Live Heifer Avg:	\$105.26	<b>Dressed Neg. Grid Vol:</b> 836
Dressed Steer Avg:	\$166.63	Steer/Heifer Avg: \$169.97
Dressed Heifer Avg:	\$166.53	<b>TOTAL VOLUME:</b> 21,993
<a href="#">LM_CT106</a>	<b>TOTAL WK TO DATE VOLUME:</b>	<b>30,369</b>
<b>Committed:</b>	16,292	<b>Delivered:</b> 8,229

Trade and demand moderate in Nebraska and the Western Cornbelt. Compared to last week in Nebraska, live 1.50 lower at 105.00. Dressed compared to last week 2.00 lower at 166.00-167.50, mostly 167.00. Compared to last week in the Western Cornbelt, early live purchases 2.00 lower at 104.00-107.00. Dressed compared to last week 2.00 lower at 166.00-167.00, mostly 167.00. Trade light on light to moderate demand in Kansas. Compared to Tuesday, live steady at 105.00. Trade limited on light demand in the Texas Panhandle. The latest established market in the Texas Panhandle was Tuesday with live at 105.00.

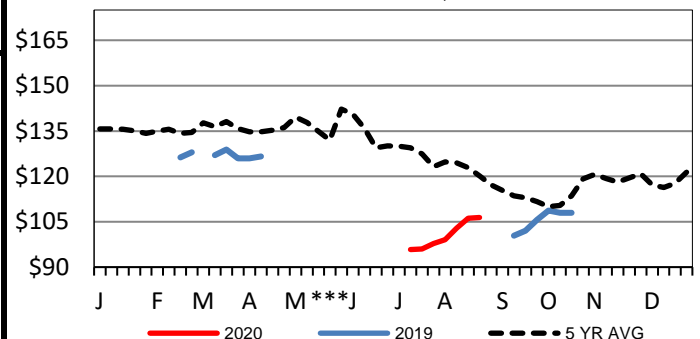
5-Area Formula Carcass Weight

Last Week's Weight = 883 lbs



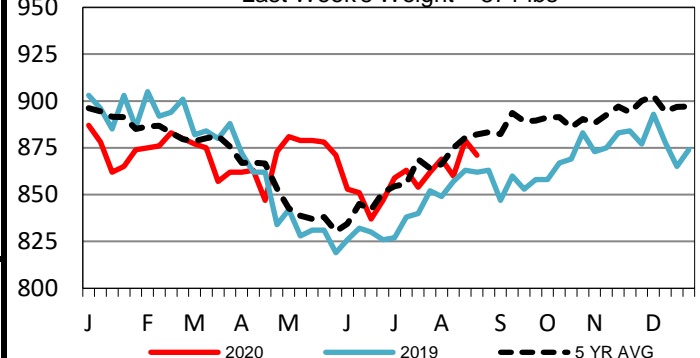
Colorado Live Wkly Steer Weighted Avg

Last Week's Price = \$106.41



Colorado Formula Carcass Weights

Last Week's Weight = 871 lbs



USDA Livestock, Poultry and Grain Market News

St. Joseph, Missouri

Phone: 816-676-7000

[stjoe.lpgmn@ams.usda.gov](mailto:stjoe.lpgmn@ams.usda.gov)