

Daily Direct Steer and Heifer Slaughter Cattle Summary

For Trade on:

Monday, August 24, 2020

<a href="#">LM_CT100</a>	<b>5-AREA</b>	<a href="#">LM_CT109</a>
<b>Neg. Cash Volume:</b>	7,550	<b>Dressed Formula Vol:</b> 71,748
Live Steer Avg:	\$105.00	Steer/Heifer Avg: \$166.66
Live Heifer Avg:	\$105.00	<b>Dressed Neg. Grid Vol:</b> 2,505
Dressed Steer Avg:	\$166.00	Steer/Heifer Avg: \$164.40
Dressed Heifer Avg:	N/A	<b>TOTAL VOLUME:</b> <b>81,803</b>
<a href="#">LM_CT106</a>	<b>TOTAL WK TO DATE VOLUME:</b>	<b>81,803</b>
<b>Committed:</b>	61,919	<b>Delivered:</b> 70,431

<a href="#">LM_CT118</a>	<b>TX-OK-NM</b>	<a href="#">LM_CT109</a>
<b>Neg. Cash Volume:</b>	7,101	<b>Dressed Formula Vol:</b> 22,679
Live Steer Avg:	\$105.00	Steer/Heifer Avg: \$164.94
Live Heifer Avg:	\$105.00	<b>Dressed Neg. Grid Vol:</b> 139
Dressed Steer Avg:	N/A	Steer/Heifer Avg: \$157.88
Dressed Heifer Avg:	N/A	<b>TOTAL VOLUME:</b> <b>29,919</b>
<a href="#">LM_CT106</a>	<b>TOTAL WK TO DATE VOLUME:</b>	<b>29,919</b>
<b>Committed:</b>	19,490	<b>Delivered:</b> 16,939

<a href="#">LM_CT121</a>	<b>KANSAS</b>	<a href="#">LM_CT109</a>
<b>Neg. Cash Volume:</b>	343	<b>Dressed Formula Vol:</b> 33,713
Live Steer Avg:	\$105.00	Steer/Heifer Avg: \$166.45
Live Heifer Avg:	\$105.00	<b>Dressed Neg. Grid Vol:</b> 250
Dressed Steer Avg:	N/A	Steer/Heifer Avg: \$163.74
Dressed Heifer Avg:	N/A	<b>TOTAL VOLUME:</b> <b>34,306</b>
<a href="#">LM_CT106</a>	<b>TOTAL WK TO DATE VOLUME:</b>	<b>34,306</b>
<b>Committed:</b>	14,167	<b>Delivered:</b> 23,144

<a href="#">LM_CT124</a>	<b>NEBRASKA</b>	<a href="#">LM_CT109</a>
<b>Neg. Cash Volume:</b>	0	<b>Dressed Formula Vol:</b> 6,405
Live Steer Avg:	N/A	Steer/Heifer Avg: \$170.17
Live Heifer Avg:	N/A	<b>Dressed Neg. Grid Vol:</b> 1,759
Dressed Steer Avg:	N/A	Steer/Heifer Avg: \$164.75
Dressed Heifer Avg:	N/A	<b>TOTAL VOLUME:</b> <b>8,164</b>
<a href="#">LM_CT106</a>	<b>TOTAL WK TO DATE VOLUME:</b>	<b>8,164</b>
<b>Committed:</b>	10,277	<b>Delivered:</b> 16,531

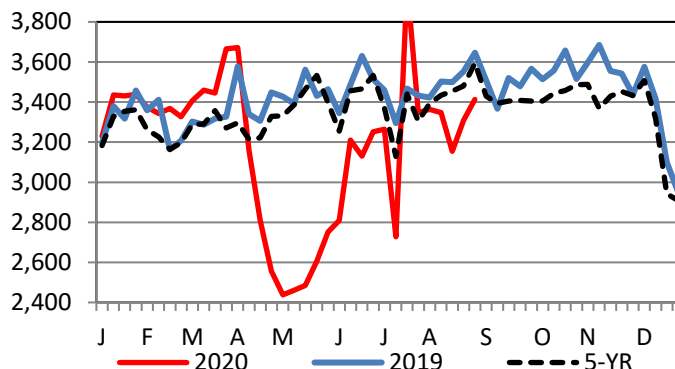
<a href="#">LM_CT134</a>	<b>COLORADO</b>	<a href="#">LM_CT109</a>
<b>Neg. Cash Volume:</b>	0	<b>Dressed Formula Vol:</b> 6,530
Live Steer Avg:	N/A	Steer/Heifer Avg: \$169.43
Live Heifer Avg:	N/A	<b>Dressed Neg. Grid Vol:</b> 80
Dressed Steer Avg:	N/A	Steer/Heifer Avg: \$165.38
Dressed Heifer Avg:	N/A	<b>TOTAL VOLUME:</b> <b>6,610</b>
<a href="#">LM_CT106</a>	<b>TOTAL WK TO DATE VOLUME:</b>	<b>6,610</b>
<b>Committed:</b>	6,017	<b>Delivered:</b> 5,759

<a href="#">LM_CT137</a>	<b>IA-MN</b>	<a href="#">LM_CT109</a>
<b>Neg. Cash Volume:</b>	106	<b>Dressed Formula Vol:</b> 2,694
Live Steer Avg:	N/A	Steer/Heifer Avg: \$168.73
Live Heifer Avg:	N/A	<b>Dressed Neg. Grid Vol:</b> 354
Dressed Steer Avg:	\$166.00	Steer/Heifer Avg: \$165.62
Dressed Heifer Avg:	N/A	<b>TOTAL VOLUME:</b> <b>3,154</b>
<a href="#">LM_CT106</a>	<b>TOTAL WK TO DATE VOLUME:</b>	<b>3,154</b>
<b>Committed:</b>	11,968	<b>Delivered:</b> 8,058

On Monday negotiated cash trade and demand were light to moderate in the Texas Panhandle. Compared to last week live purchases traded 1.00 lower at 105.00. Trade was mostly inactive on light demand in all other feeding regions. The latest established market in Kansas was last week with live purchases at 106.00. For the prior week in the Northern Plains live purchases traded at 106.50 and, in

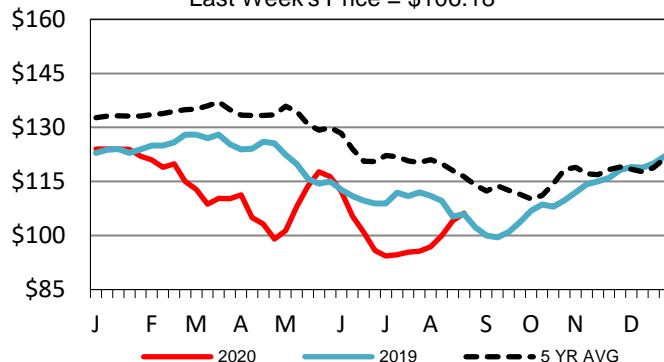
Nebraska, dressed purchases traded at 169.00. Last week in the Western Cornbelt, live purchases traded from 106.00-109.00 and dressed purchases traded at 169.00.

Boxed Beef Formula Load Count



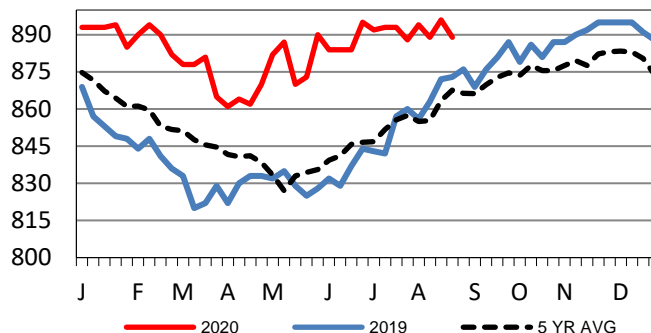
Kansas Weekly Live Steer Weighted Average

Last Week's Price = \$106.18



Kansas Formula Carcass Weights

Last Week's Weight = 889 lbs



USDA Livestock, Poultry and Grain Market News

St. Joseph, Missouri

Phone: 816-676-7000

[stjoe.lpgmn@ams.usda.gov](mailto:stjoe.lpgmn@ams.usda.gov)