

Daily Direct Steer and Heifer Slaughter Cattle Summary

For Trade on:

Wednesday, August 19, 2020

LM CT100	5-AREA	LM CT109
Neg. Cash Volume:	23,236	Dressed Formula Vol: 36,959
Live Steer Avg:	\$106.25	Steer/Heifer Avg: \$165.95
Live Heifer Avg:	\$106.10	Dressed Neg. Grid Vol: 2,233
Dressed Steer Avg:	\$170.13	Steer/Heifer Avg: \$162.72
Dressed Heifer Avg:	N/A	TOTAL VOLUME: 62,428
LM CT106	TOTAL WK TO DATE VOLUME:	204,974
Committed:	72,248	Delivered: 69,530

LM CT118	TX-OK-NM	LM CT109
Neg. Cash Volume:	7,788	Dressed Formula Vol: 11,705
Live Steer Avg:	\$106.09	Steer/Heifer Avg: \$163.78
Live Heifer Avg:	\$105.99	Dressed Neg. Grid Vol: 94
Dressed Steer Avg:	N/A	Steer/Heifer Avg: \$166.38
Dressed Heifer Avg:	N/A	TOTAL VOLUME: 19,587
LM CT106	TOTAL WK TO DATE VOLUME:	64,460
Committed:	25,822	Delivered: 16,989

LM CT121	KANSAS	LM CT109
Neg. Cash Volume:	8,971	Dressed Formula Vol: 11,870
Live Steer Avg:	\$106.00	Steer/Heifer Avg: \$165.19
Live Heifer Avg:	\$105.93	Dressed Neg. Grid Vol: 78
Dressed Steer Avg:	N/A	Steer/Heifer Avg: \$168.35
Dressed Heifer Avg:	N/A	TOTAL VOLUME: 20,919
LM CT106	TOTAL WK TO DATE VOLUME:	81,666
Committed:	23,502	Delivered: 19,940

LM CT124	NEBRASKA	LM CT109
Neg. Cash Volume:	436	Dressed Formula Vol: 8,136
Live Steer Avg:	N/A	Steer/Heifer Avg: \$168.46
Live Heifer Avg:	N/A	Dressed Neg. Grid Vol: 1,471
Dressed Steer Avg:	\$168.00	Steer/Heifer Avg: \$161.45
Dressed Heifer Avg:	N/A	TOTAL VOLUME: 10,043
LM CT106	TOTAL WK TO DATE VOLUME:	30,257
Committed:	8,676	Delivered: 17,924

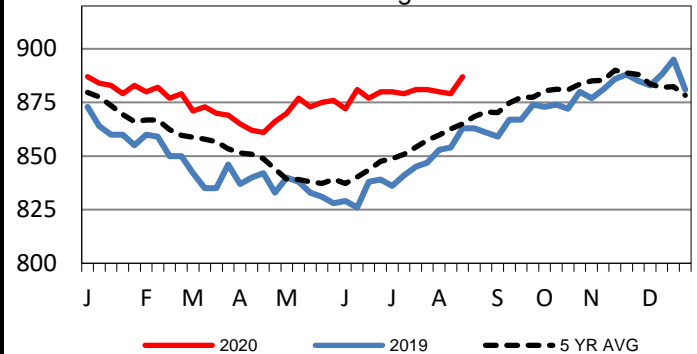
LM CT134	COLORADO	LM CT109
Neg. Cash Volume:	0	Dressed Formula Vol: 2,347
Live Steer Avg:	N/A	Steer/Heifer Avg: \$167.10
Live Heifer Avg:	N/A	Dressed Neg. Grid Vol: 372
Dressed Steer Avg:	N/A	Steer/Heifer Avg: \$164.09
Dressed Heifer Avg:	N/A	TOTAL VOLUME: 2,719
LM CT106	TOTAL WK TO DATE VOLUME:	10,092
Committed:	2,114	Delivered: 5,038

LM CT137	IA-MN	LM CT109
Neg. Cash Volume:	6,041	Dressed Formula Vol: 3,063
Live Steer Avg:	\$106.85	Steer/Heifer Avg: \$170.17
Live Heifer Avg:	\$106.99	Dressed Neg. Grid Vol: 218
Dressed Steer Avg:	\$170.45	Steer/Heifer Avg: \$165.30
Dressed Heifer Avg:	N/A	TOTAL VOLUME: 9,322
LM CT106	TOTAL WK TO DATE VOLUME:	18,793
Committed:	12,134	Delivered: 9,639

In the Southern Plains negotiated cash trade and demand moderate. Compared to Tuesday live steady at 106.00. In the Western Cornbelt negotiated cash trade slow on moderate demand. Thus far for the week live mostly steady to 1.00 higher at 106.00-107.00, compared to the prior week. Not enough dressed for a full market trend. Last week dressed moved 165.00-170.00. In the Northern Plains negotiated cash trade inactive on very light demand. Not enough for a market trend. For the previous week in the Northern Plains live 106.00-106.50 and dressed, in Nebraska 168.00-170.00.

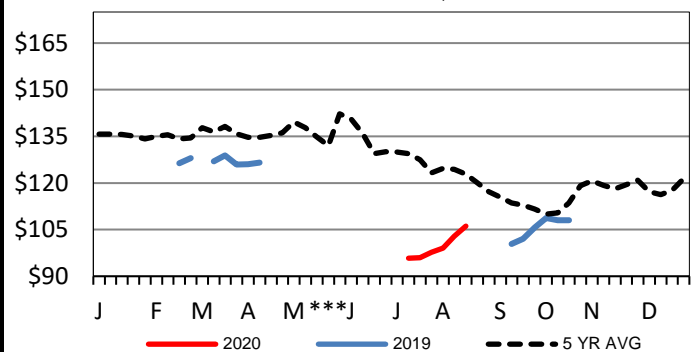
5-Area Formula Carcass Weight

Last Week's Weight = 887 lbs



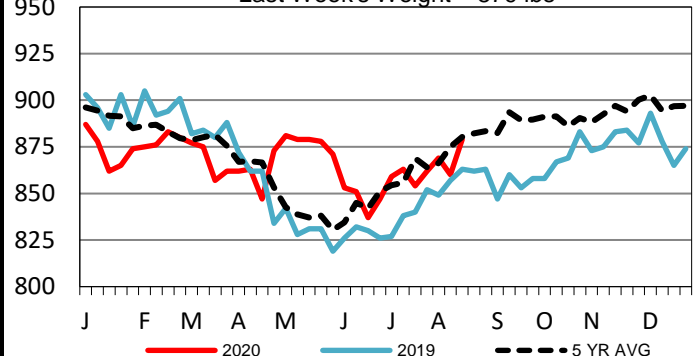
Colorado Live Wkly Steer Weighted Avg

Last Week's Price = \$106.13



Colorado Formula Carcass Weights

Last Week's Weight = 879 lbs



USDA Livestock, Poultry and Grain Market News

St. Joseph, Missouri

Phone: 816-676-7000

stjoe.lpgmn@ams.usda.gov