

Daily Direct Steer and Heifer Slaughter Cattle Summary

For Trade on:

Thursday, August 13, 2020

LM CT100	5-AREA	LM CT109
Neg. Cash Volume:	6,725	Dressed Formula Vol: 34,901
Live Steer Avg:	\$104.19	Steer/Heifer Avg: \$162.14
Live Heifer Avg:	\$103.98	Dressed Neg. Grid Vol: 1,846
Dressed Steer Avg:	\$166.20	Steer/Heifer Avg: \$160.84
Dressed Heifer Avg:	\$165.51	TOTAL VOLUME: 43,472
LM CT106	TOTAL WK TO DATE VOLUME:	240,546
Committed:	70,505	Delivered: 69,437

LM CT118	TX-OK-NM	LM CT109
Neg. Cash Volume:	558	Dressed Formula Vol: 8,576
Live Steer Avg:	N/A	Steer/Heifer Avg: \$158.81
Live Heifer Avg:	\$104.00	Dressed Neg. Grid Vol: 0
Dressed Steer Avg:	N/A	Steer/Heifer Avg: N/A
Dressed Heifer Avg:	N/A	TOTAL VOLUME: 9,134
LM CT106	TOTAL WK TO DATE VOLUME:	67,234
Committed:	30,432	Delivered: 18,948

LM CT121	KANSAS	LM CT109
Neg. Cash Volume:	4,520	Dressed Formula Vol: 12,765
Live Steer Avg:	\$103.90	Steer/Heifer Avg: \$159.05
Live Heifer Avg:	\$103.94	Dressed Neg. Grid Vol: 277
Dressed Steer Avg:	N/A	Steer/Heifer Avg: \$165.46
Dressed Heifer Avg:	N/A	TOTAL VOLUME: 17,562
LM CT106	TOTAL WK TO DATE VOLUME:	91,803
Committed:	23,418	Delivered: 19,519

LM CT124	NEBRASKA	LM CT109
Neg. Cash Volume:	96	Dressed Formula Vol: 7,777
Live Steer Avg:	N/A	Steer/Heifer Avg: \$165.02
Live Heifer Avg:	N/A	Dressed Neg. Grid Vol: 702
Dressed Steer Avg:	\$169.00	Steer/Heifer Avg: \$162.45
Dressed Heifer Avg:	N/A	TOTAL VOLUME: 8,575
LM CT106	TOTAL WK TO DATE VOLUME:	36,548
Committed:	10,408	Delivered: 17,283

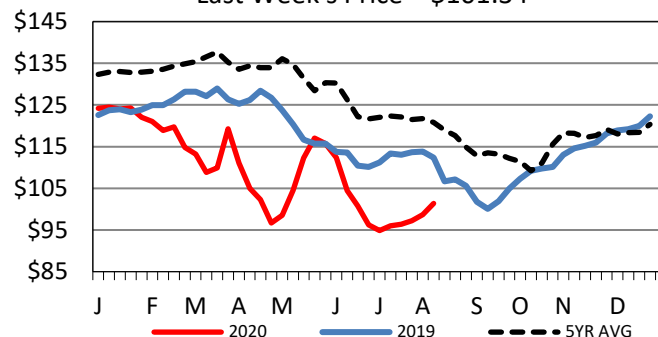
LM CT134	COLORADO	LM CT109
Neg. Cash Volume:	0	Dressed Formula Vol: 4,594
Live Steer Avg:	N/A	Steer/Heifer Avg: \$171.60
Live Heifer Avg:	N/A	Dressed Neg. Grid Vol: 489
Dressed Steer Avg:	N/A	Steer/Heifer Avg: \$157.54
Dressed Heifer Avg:	N/A	TOTAL VOLUME: 5,083
LM CT106	TOTAL WK TO DATE VOLUME:	19,112
Committed:	518	Delivered: 7,117

LM CT137	IA-MN	LM CT109
Neg. Cash Volume:	1,551	Dressed Formula Vol: 1,264
Live Steer Avg:	\$105.86	Steer/Heifer Avg: \$163.88
Live Heifer Avg:	\$105.00	Dressed Neg. Grid Vol: 457
Dressed Steer Avg:	\$165.75	Steer/Heifer Avg: \$159.69
Dressed Heifer Avg:	\$165.51	TOTAL VOLUME: 3,272
LM CT106	TOTAL WK TO DATE VOLUME:	26,678
Committed:	5,729	Delivered: 6,570

Negotiated cash trade limited on light demand in the Southern Plains, Nebraska and Western Cornbelt. In Colorado negotiated cash trading was at a standstill. Not enough purchases in any of these regions for a market trend. In the Southern Plains the last reported market was on Wednesday with live purchases mostly at 104.00. In Nebraska the last reported dressed market was on Tuesday at 165.00. Last week, in the Northern Plains live purchases moved at 103.00. In the Western Cornbelt the last live purchase market was on Wednesday from 106.50 to 107.00. The last dressed purchase market was on Tuesday from 165.00 to 170.00.

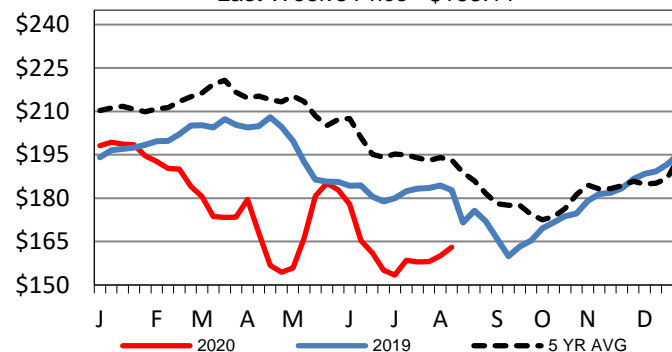
5-Area Live Steer Weighted Average

Last Week's Price = \$101.34



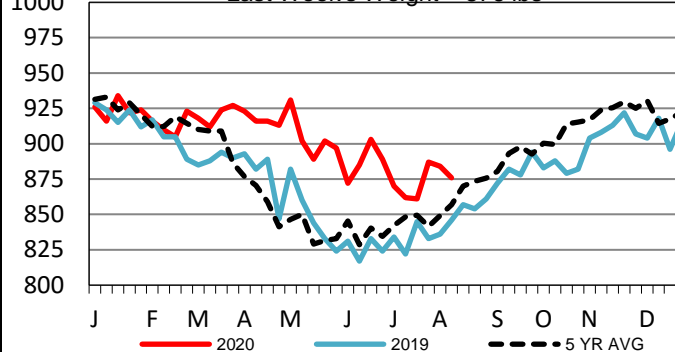
Iowa-Minnesota Wkly Dressed Steer Wtd Avg

Last Week's Price = \$163.11



Iowa-Minnesota Formula Carcass Weights

Last Week's Weight = 876 lbs



USDA Livestock, Poultry and Grain Market News

St. Joseph, Missouri

Phone: 816-676-7000

stjoe.lpgmn@ams.usda.gov